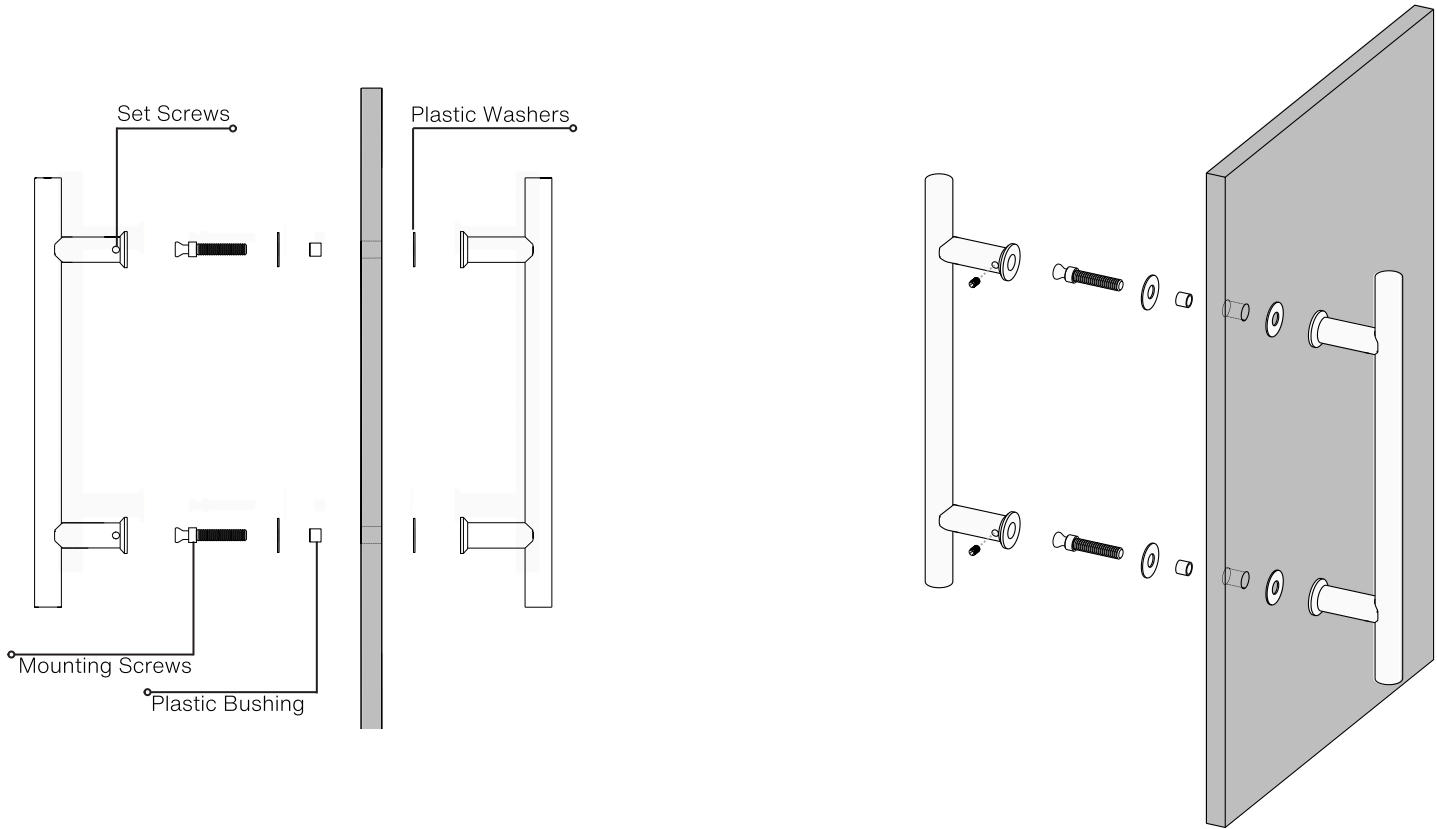


Shower Door Series™

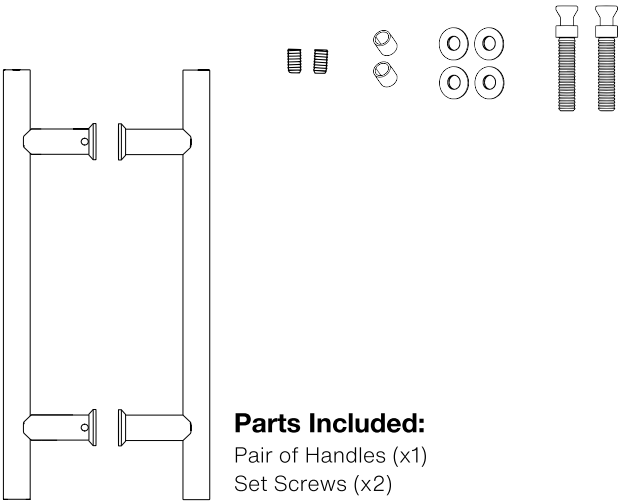
Ladder Pull Handle
Back to Back
Suitable for Glass Doors

INSIDE OUTSIDE



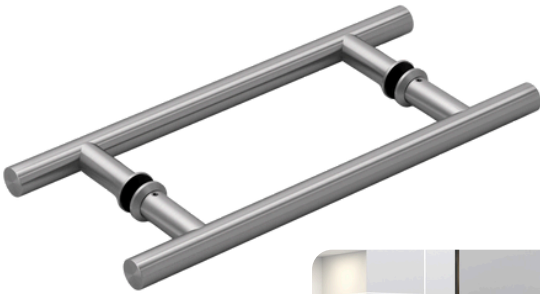
Side View

Axonometric View



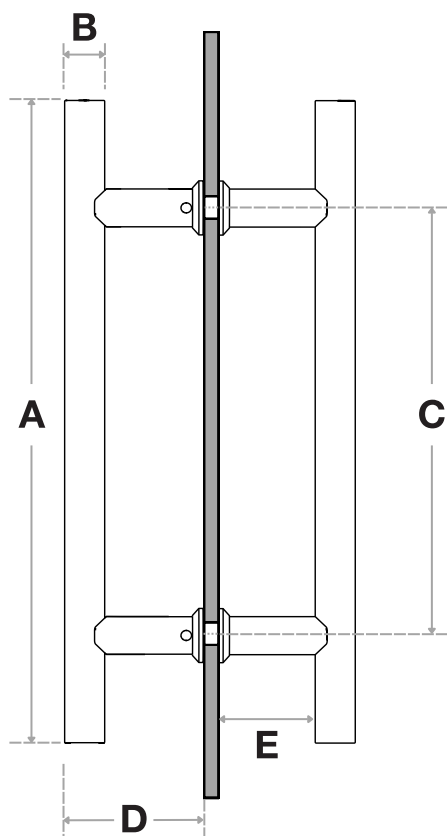
- Parts Included:**
Pair of Handles (x1)
Set Screws (x2)
Bushings (x2)
Plastic Washers(x4)
Mounting Screws up to 1-3/4" doors (x2)

Note: For doors thicker than 1-3/4", mounting screws must be purchased separately.



Shower Door Series

Ladder Pull Handle
Back to Back
Suitable for Glass Doors



Handle Length (A)	Diameter (B)	Center-to-Center (C)	Projection (D)	Clearance (E)
10"	3/4"	6"	2-3/4"	2"
12"	3/4"	8"	2-3/4"	2"

Side View

FINISHES (1):



Brushed Satin = S



Matte Black Powder Coated = B



Polished = P

OVERALL LENGTHS (2)

10" = 10

12" = 12

DIAMETER (3)

3/4" = 075

For a complete **SKU#** add Finish **(1)**, Overall length **(2)** and Diameter **(3)**

SH-PRO-304-LPH-

FINISH

OVERALL
LENGTH

DIAMETER

DOOR TYPE

GLASS DOORS
UP TO 3/4"

HOLE SIZE
DIAMETER

5/8"

Not all Finishes, Lengths and Diameters are available in this style.
For customization requests, please contact us at info@strongarhardware.com