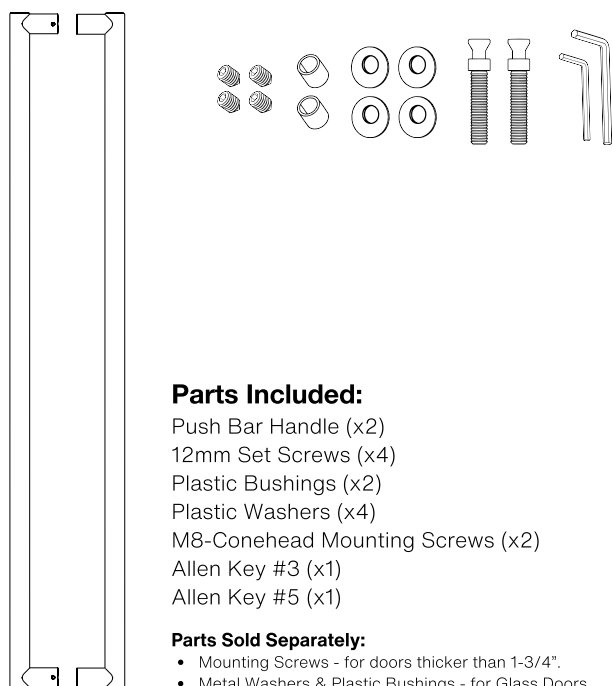
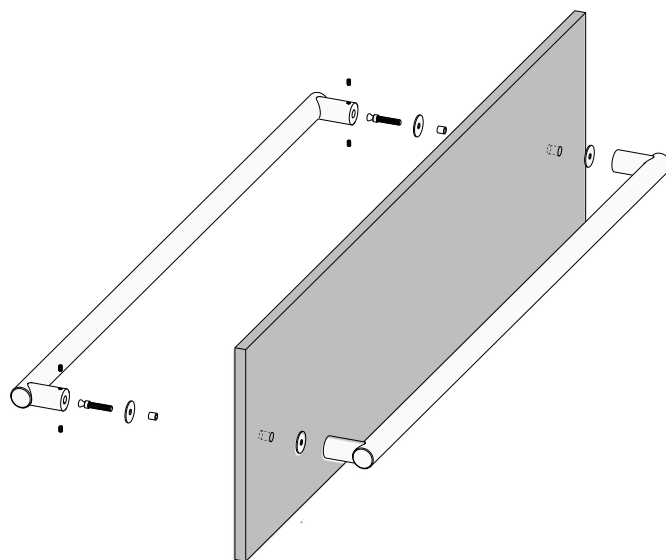
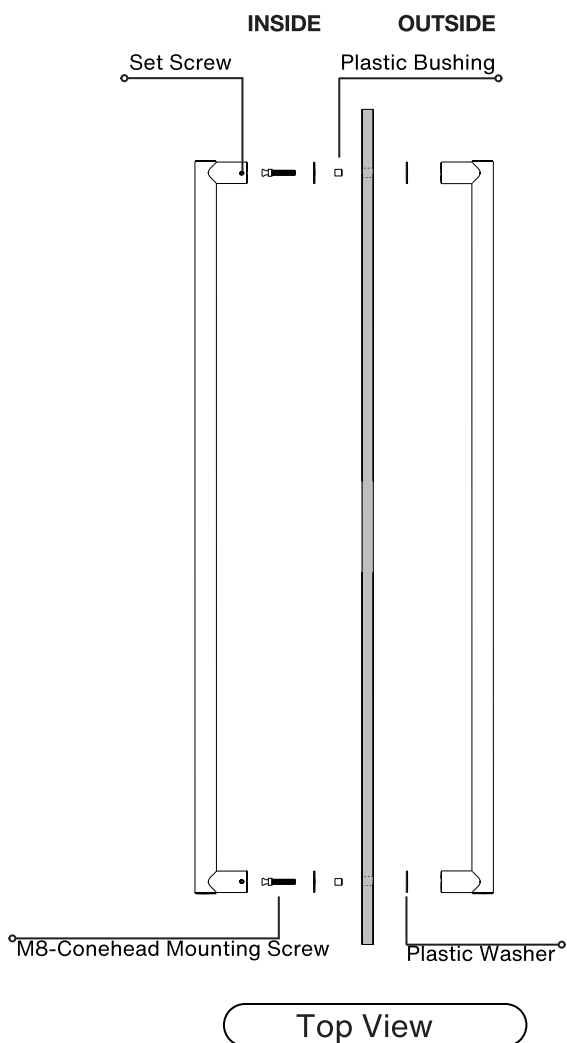
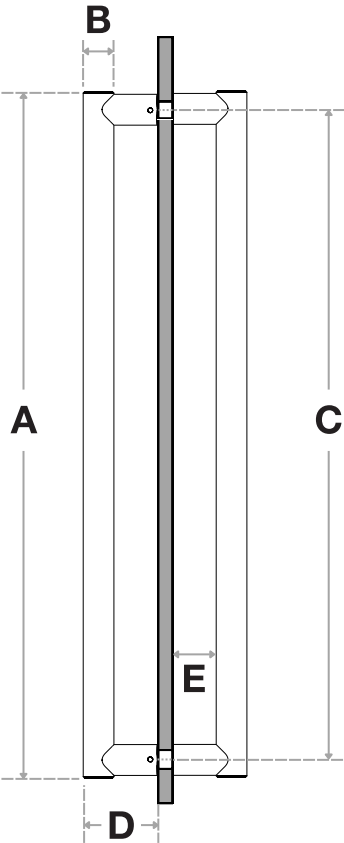


Pro-Line Aluminum Series™

Push Bar Handle
Back to Back
Suitable for Glass, Wood and Metal Doors





Top View

Handle Length (A)	Diameter (B)	Center-to-Center (C)	Projection (D)	Clearance (E)
34-1/4"	1-1/4"	33"	3"	1-3/4"

FINISHES (1):

- Clear Anodized Aluminum = C
- Black Anodized Aluminum = B

OVERALL LENGTHS (2)

34-1/4" = 34

DIAMETERS (3)

1-1/4" = 1250

For a complete **SKU#** add Finish **(1)**, Overall length **(2)** and Diameter **(3)**

SH-PRO-PB-ALU-BB-

-

-

-

FINISH

OVERALL LENGTH

DIAMETER

Material: Aluminum.

DOOR TYPE	GLASS DOORS UP TO 3/4"	WOOD & METAL DOORS. UP TO 4-3/4"
HOLE SIZE DIAMETER	5/8"	5/16"

Not all Finishes, Lengths and Diameters are available in this style.
For customization requests, please contact us at info@strongarhardware.com