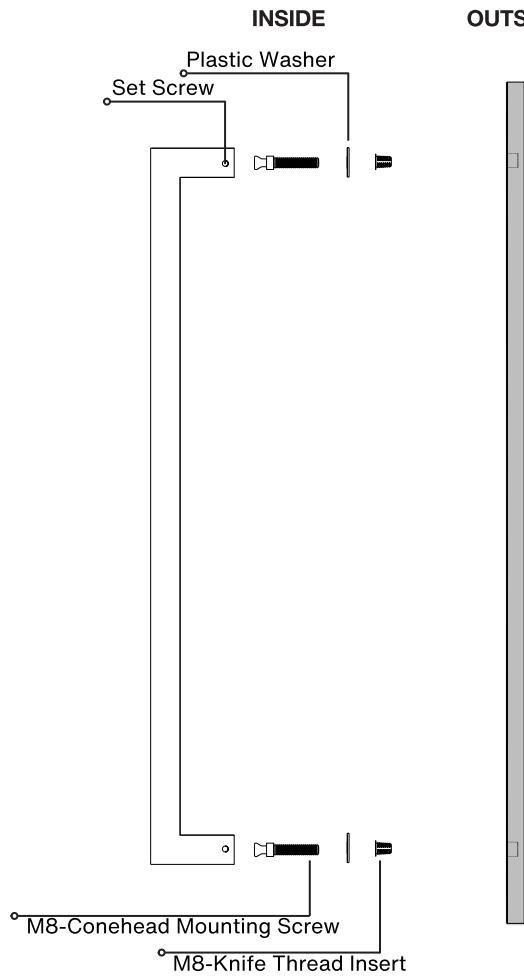
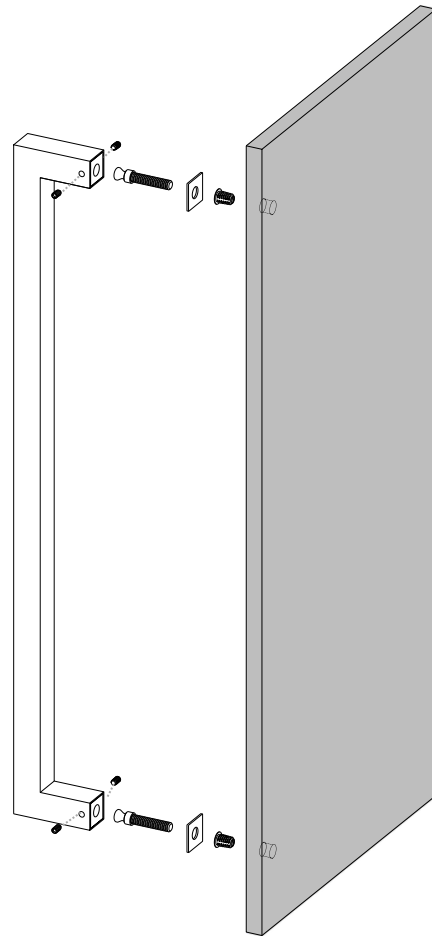


Pro-Line Square Series™

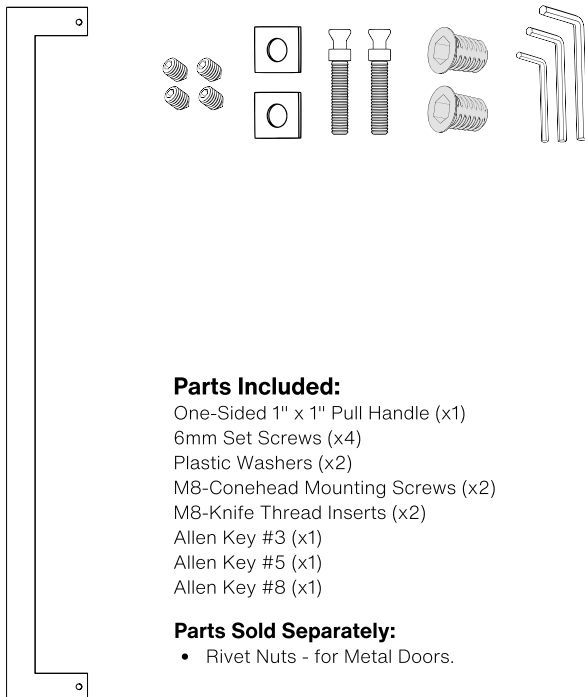
One-Sided 1" x 1" Pull Handle
 Concealed Surface Mounts
 Suitable for Wood and Metal Doors



Side View



Axonometric View



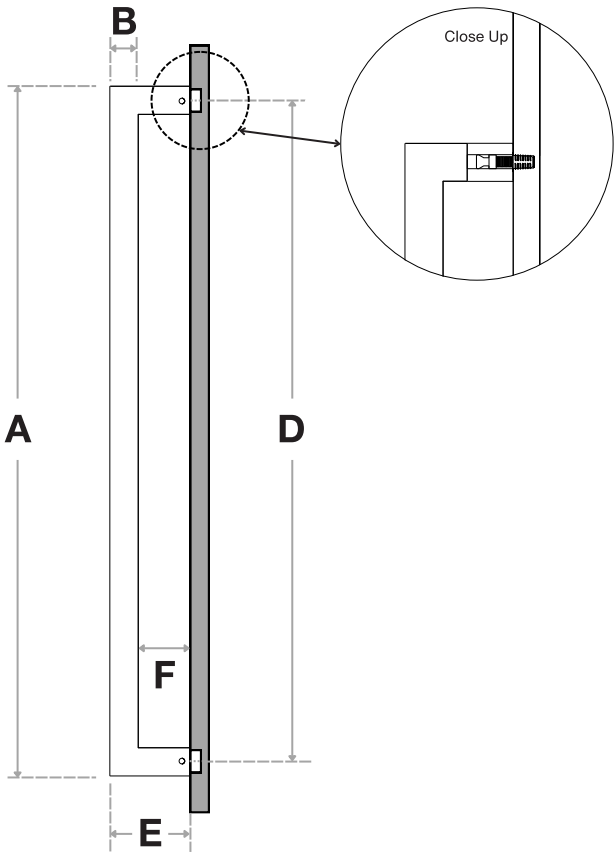
Parts Included:

- One-Sided 1" x 1" Pull Handle (x1)
- 6mm Set Screws (x4)
- Plastic Washers (x2)
- M8-Conehead Mounting Screws (x2)
- M8-Knife Thread Inserts (x2)
- Allen Key #3 (x1)
- Allen Key #5 (x1)
- Allen Key #8 (x1)

Parts Sold Separately:

- Rivet Nuts - for Metal Doors.





Handle Length (A)	Side (B)	Front (C)	Center-to-Center (D)	Projection (E)	Clearance (F)
12"	1"	1"	11"	2-13/16"	1-13/16"
16"	1"	1"	15"	2-13/16"	1-13/16"
18"	1"	1"	17"	2-13/16"	1-13/16"
24"	1"	1"	23"	2-13/16"	1-13/16"
32"	1"	1"	31"	2-13/16"	1-13/16"
36"	1"	1"	35"	2-13/16"	1-13/16"
48"	1"	1"	47"	2-13/16"	1-13/16"
60"	1"	1"	59"	2-13/16"	1-13/16"
72"	1"	1"	71"	2-13/16"	1-13/16"

Side View

Front View

FINISHES (1)

- Brushed Satin = S
- Polished = P
- Matte Black Powder Coated = B
- Bronze Powder Coated = BR
- Oil Rubbed Bronze = ORB
- Satin Brass = SB
- Matte White Powder Coated = W

OVERALL LENGTHS (2)

- 12" = 12
- 16" = 16
- 18" = 18
- 24" = 24
- 32" = 32
- 36" = 36
- 48" = 48
- 60" = 60
- 72" = 72

CROSS-SECTION (3)

1" x 1" = 1010

For a complete SKU# add Finish (1), Overall length (2) and Cross-Section (3)

SH-PRO-304-SPH-CO-

FINISH

 -

OVERALL LENGTH

 -

CROSS SECTION

Material: 304 grade stainless steel alloy.

DOOR TYPE

WOOD & METAL DOORS.
UP TO 4-3/4"

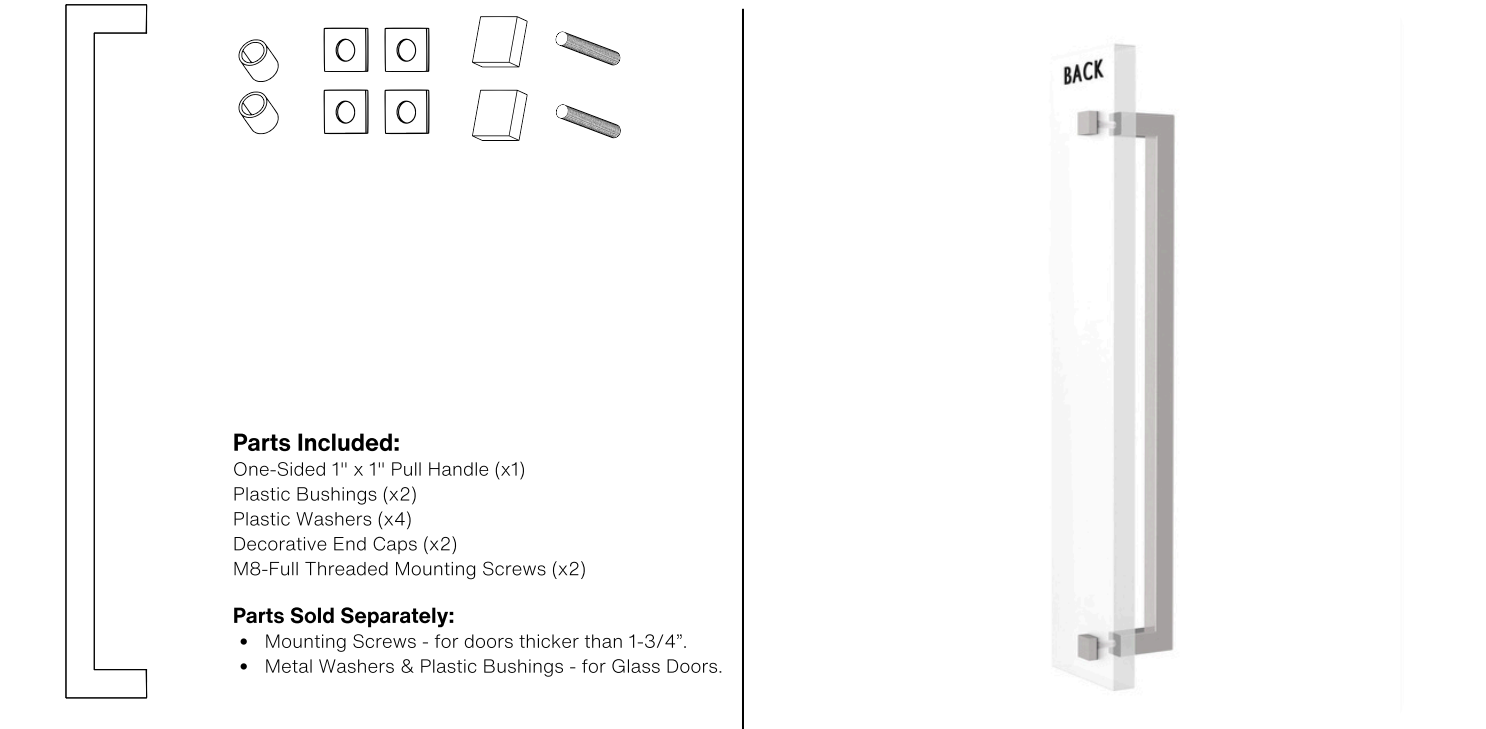
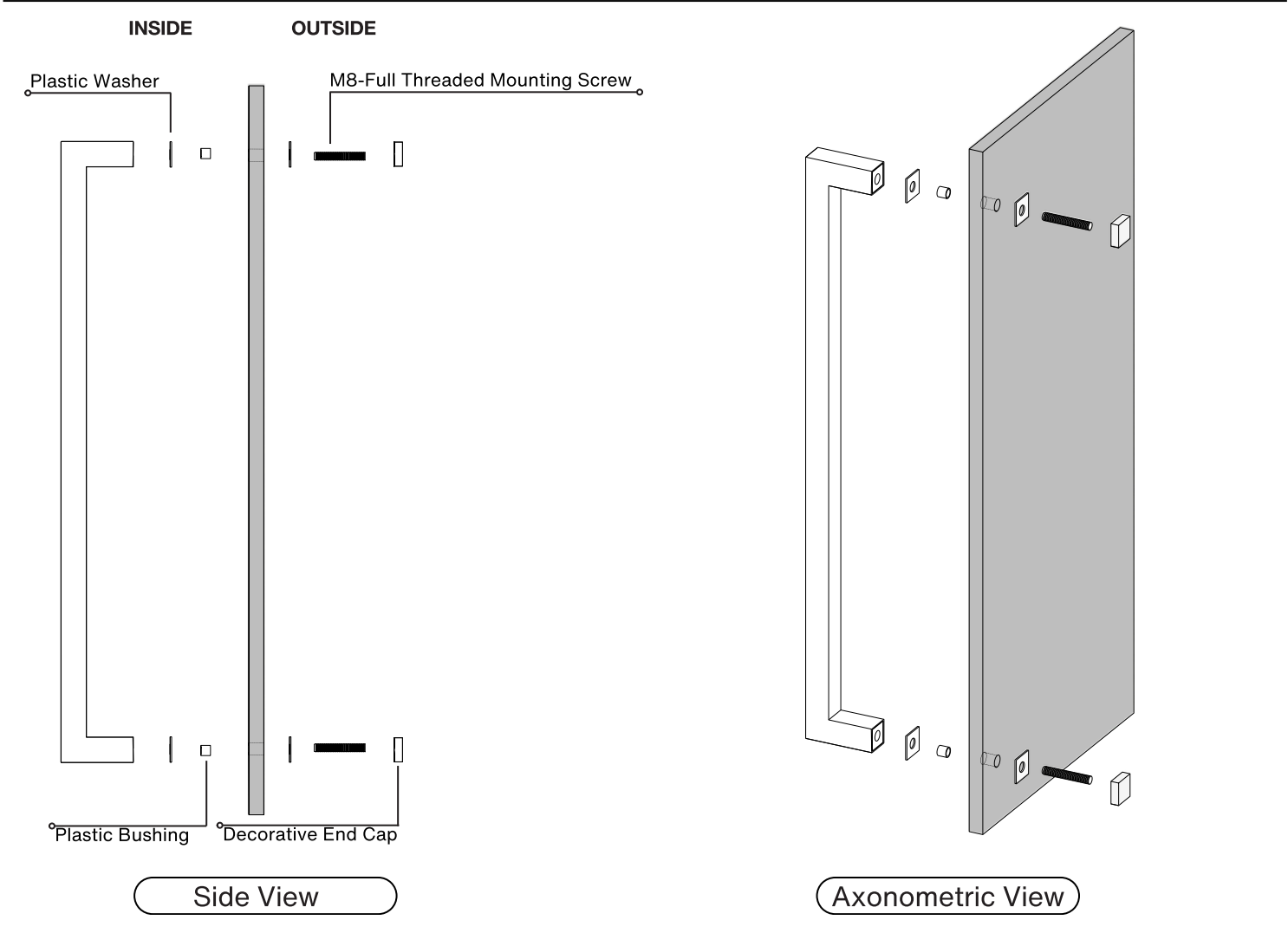
HOLE SIZE
DIAMETER

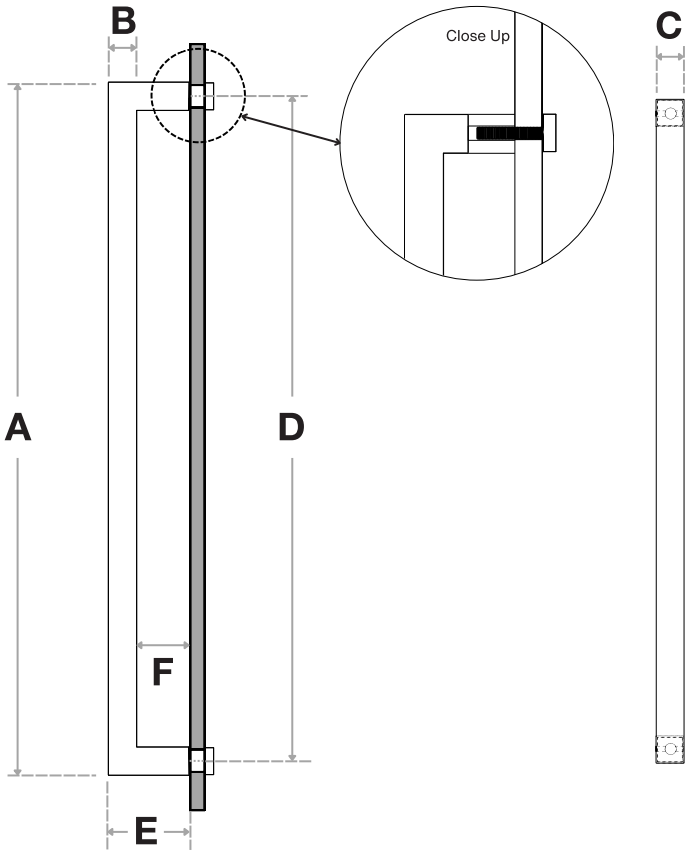
7/16"

Not all Finishes, Lengths and Diameters are available in this style.
For customization requests, please contact us at info@strongarhardware.com

Pro-Line Square Series™

One-Sided 1" x 1" Pull Handle
Decorative Thru-Bolt End Caps
Suitable for Glass, Wood, and Metal Doors





Handle Length (A)	Side (B)	Front (C)	Center-to-Center (D)	Projection (E)	Clearance (F)
12"	1"	1"	11"	2-13/16"	1-13/16"
16"	1"	1"	15"	2-13/16"	1-13/16"
18"	1"	1"	17"	2-13/16"	1-13/16"
24"	1"	1"	23"	2-13/16"	1-13/16"
32"	1"	1"	31"	2-13/16"	1-13/16"
36"	1"	1"	35"	2-13/16"	1-13/16"
48"	1"	1"	47"	2-13/16"	1-13/16"
60"	1"	1"	59"	2-13/16"	1-13/16"
72"	1"	1"	71"	2-13/16"	1-13/16"

Side View

Front View

FINISHES (1)

- Brushed Satin = S
- Polished = P
- Matte Black Powder Coated = B
- Bronze Powder Coated = BR
- Oil Rubbed Bronze = ORB
- Satin Brass = SB
- Matte White Powder Coated = W

OVERALL LENGTHS (2)

- 12" = 12
- 16" = 16
- 18" = 18
- 24" = 24
- 32" = 32
- 36" = 36
- 48" = 48
- 60" = 60
- 72" = 72

CROSS-SECTION (3)

1" x 1" = 1010

For a complete SKU# add Finish (1), Overall length (2) and Cross-Section (3)

SH-PRO-304-SPH-DE- - -

FINISH OVERALL LENGTH CROSS SECTION

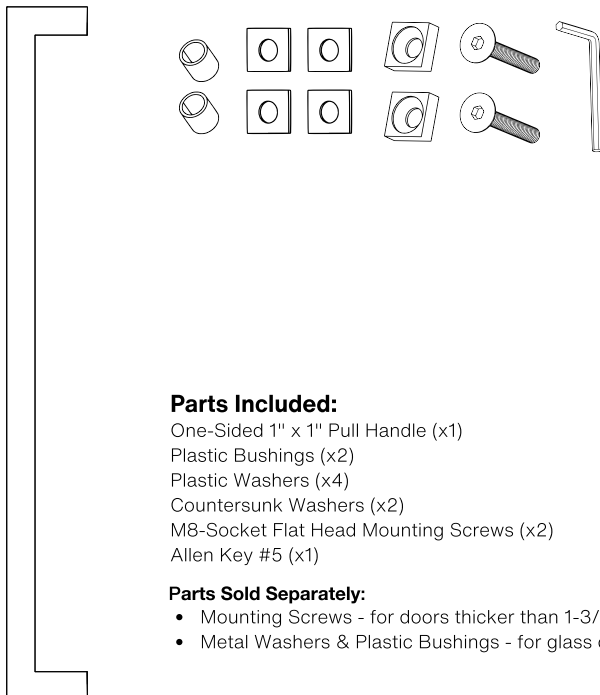
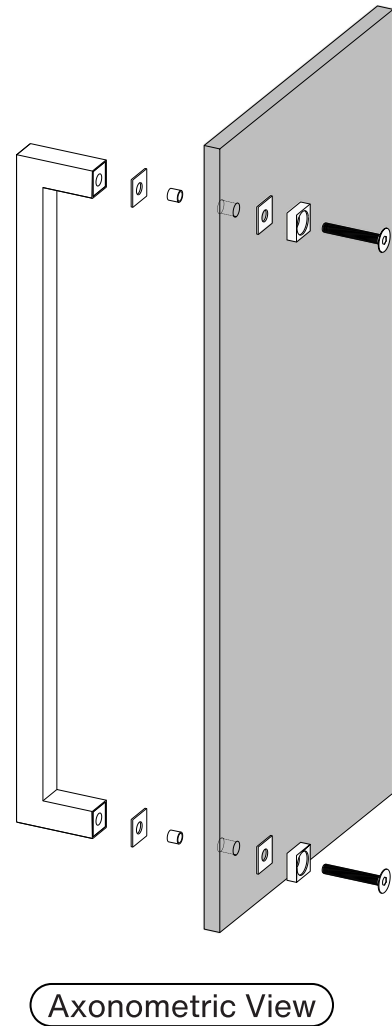
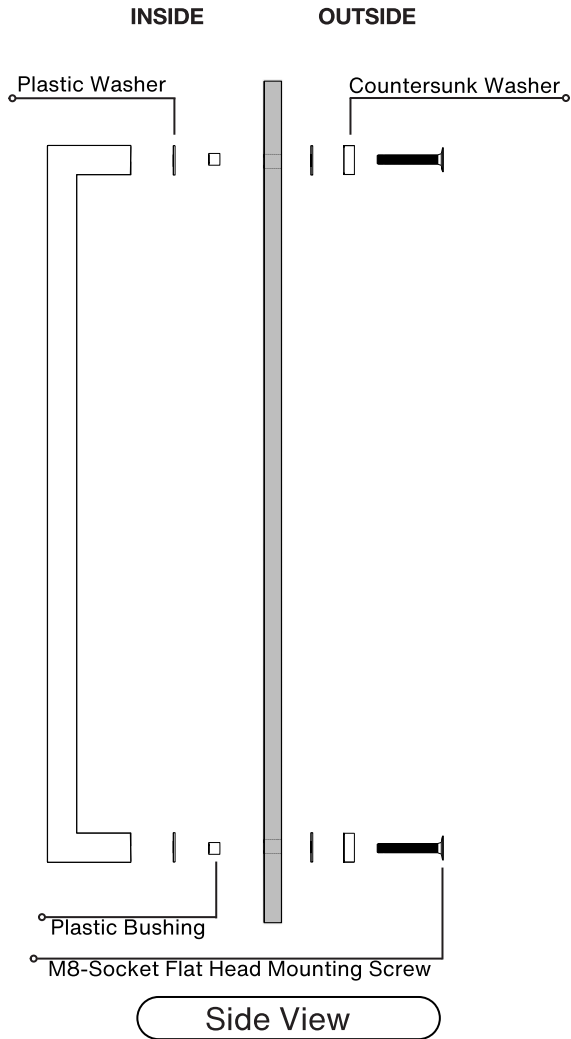
Material: 304 grade stainless steel alloy.

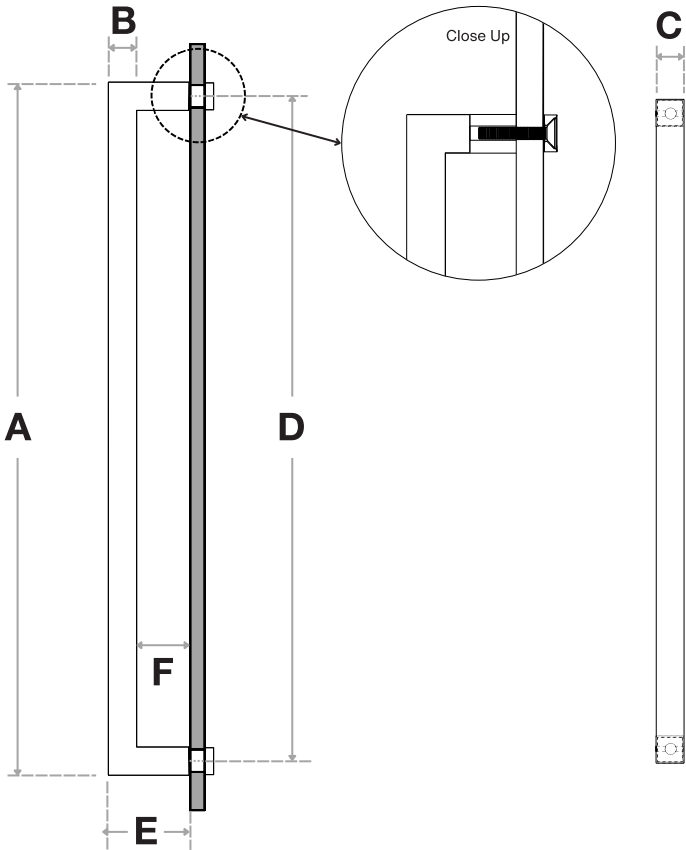
DOOR TYPE	GLASS DOORS UP TO 3/4"	WOOD & METAL DOORS. UP TO 4-3/4"
HOLE SIZE DIAMETER	5/8"	5/16"

Not all Finishes, Lengths and Diameters are available in this style.
For customization requests, please contact us at info@strongarhardware.com

Pro-Line Square Series™

One-Sided 1" x 1" Pull Handle
 Countersunk Thru-Bolt Washers
 Suitable for Glass, Wood and Metal Doors





Handle Length (A)	Side (B)	Front (C)	Center-to-Center (D)	Projection (E)	Clearance (F)
12"	1"	1"	11"	2-13/16"	1-13/16"
16"	1"	1"	15"	2-13/16"	1-13/16"
18"	1"	1"	17"	2-13/16"	1-13/16"
24"	1"	1"	23"	2-13/16"	1-13/16"
32"	1"	1"	31"	2-13/16"	1-13/16"
36"	1"	1"	35"	2-13/16"	1-13/16"
48"	1"	1"	47"	2-13/16"	1-13/16"
60"	1"	1"	59"	2-13/16"	1-13/16"
72"	1"	1"	71"	2-13/16"	1-13/16"

Side View

Front View

FINISHES (1)

- Brushed Satin = S
- Polished = P
- Matte Black Powder Coated = B
- Bronze Powder Coated = BR
- Oil Rubbed Bronze = ORB
- Satin Brass = SB
- Matte White Powder Coated = W

OVERALL LENGTHS (2)

- 12" = 12
- 16" = 16
- 18" = 18
- 24" = 24
- 32" = 32
- 36" = 36
- 48" = 48
- 60" = 60
- 72" = 72

CROSS-SECTION (3)

1" x 1" = 1010

For a complete SKU# add Finish (1), Overall length (2) and Cross-Section (3)

SH-PRO-304-SPH-CW- - -

FINISH OVERALL LENGTH CROSS SECTION

Material: 304 grade stainless steel alloy.

DOOR TYPE

GLASS DOORS
UP TO 3/4"

WOOD & METAL DOORS.
UP TO 4-3/4"

HOLE SIZE
DIAMETER

5/8"

5/16"

Not all Finishes, Lengths and Diameters are available in this style.
For customization requests, please contact us at info@strongarhardware.com