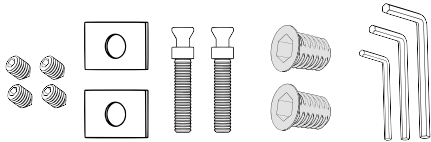
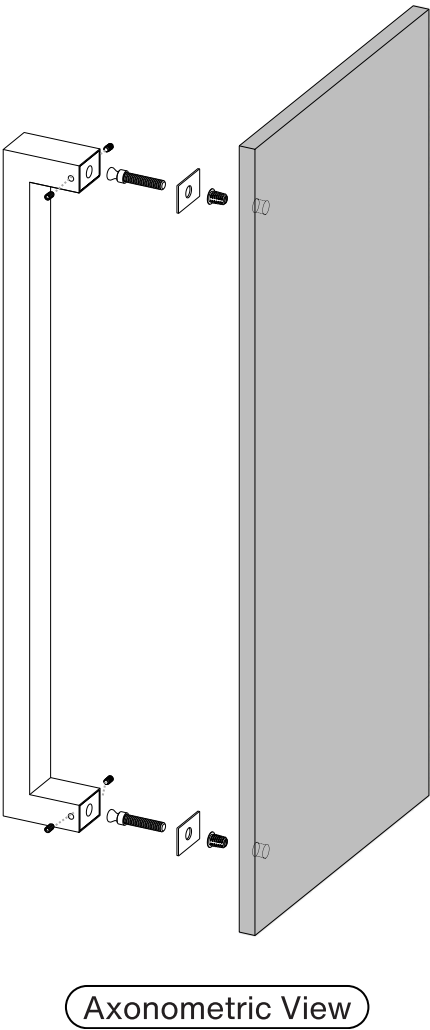
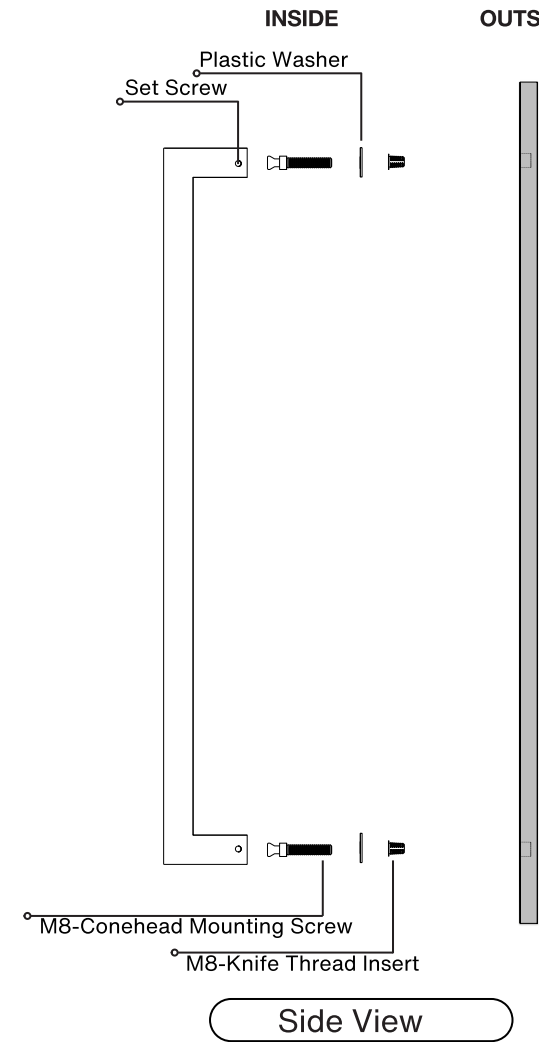


# Pro-Line Rectangular Series™

One-Sided 1.5" x 1" Pull Handle  
Concealed Surface Mounts  
Suitable for Wood and Metal Doors



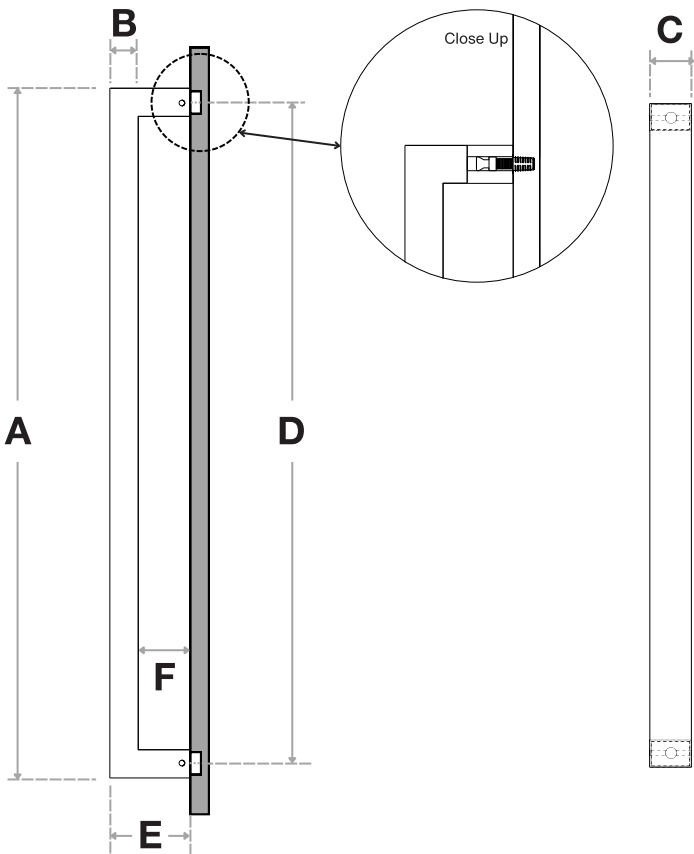
**Parts Included:**

- One-Sided 1.5" x 1" Pull Handle (x1)
- 12mm Set Screws (x4)
- Plastic Washers (x2)
- M8-Conehead Mounting Screws (x2)
- M8-Knife Thread Inserts (x2)
- Allen Key #3 (x1)
- Allen Key #5 (x1)
- Allen Key #8 (x1)

**Parts Sold Separately:**

- Rivet Nuts - for Metal Doors.





Handle Length (A)	Side (B)	Front (C)	Center-to-Center (D)	Projection (E)	Clearance (F)
16"	1"	1-1/2"	15"	2-7/8"	1-7/8"
18"	1"	1-1/2"	17"	2-7/8"	1-7/8"
24"	1"	1-1/2"	23"	2-7/8"	1-7/8"
32"	1"	1-1/2"	31"	2-7/8"	1-7/8"
36"	1"	1-1/2"	35"	2-7/8"	1-7/8"
48"	1"	1-1/2"	47"	2-7/8"	1-7/8"
60"	1"	1-1/2"	59"	2-7/8"	1-7/8"
72"	1"	1-1/2"	71"	2-7/8"	1-7/8"
84"	1"	1-1/2"	83"	2-7/8"	1-7/8"
96"	1"	1-1/2"	95"	2-7/8"	1-7/8"

Side View

Front View

FINISHES (1)

- Brushed Satin = S
- Polished = P
- Matte Black Powder Coated = B
- Bronze Powder Coated = BR
- Oil Rubbed Bronze = ORB
- Satin Brass = SB
- Matte White Powder Coated = W

OVERALL LENGTHS (2)

- 16" = 16
- 18" = 18
- 24" = 24
- 32" = 32
- 36" = 36
- 48" = 48
- 60" = 60
- 72" = 72
- 84" = 84
- 96" = 96

CROSS-SECTION (3)

1-1/2" x 1" = 1510

For a complete SKU# add Finish (1), Overall length (2) and Cross-Section (3)

SH-PRO-316-RPH-CO- - -

FINISH OVERALL LENGTH CROSS SECTION

Material: 316 grade stainless steel alloy.

DOOR TYPE

WOOD & METAL DOORS.  
UP TO 4-3/4"

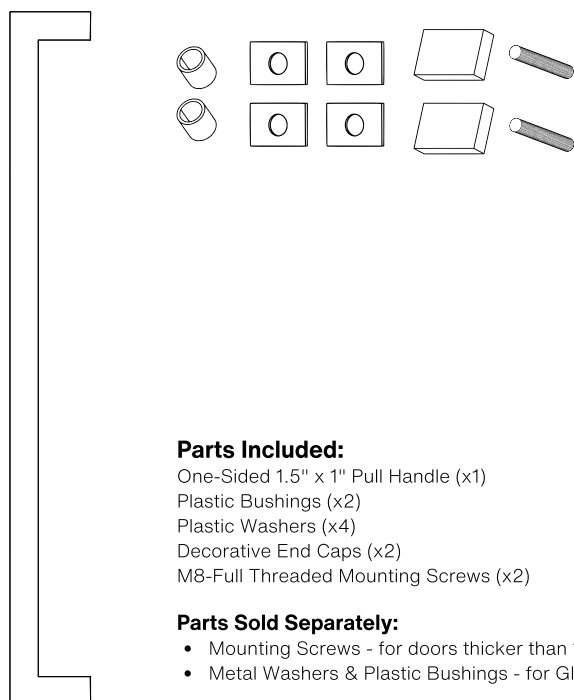
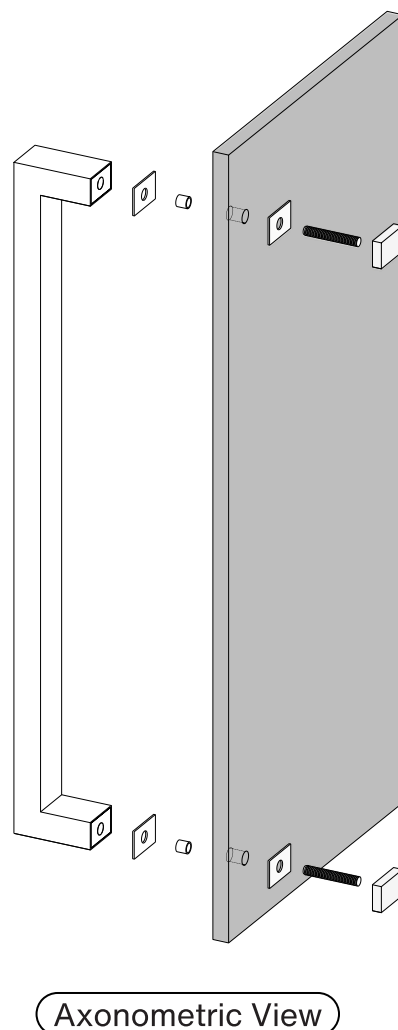
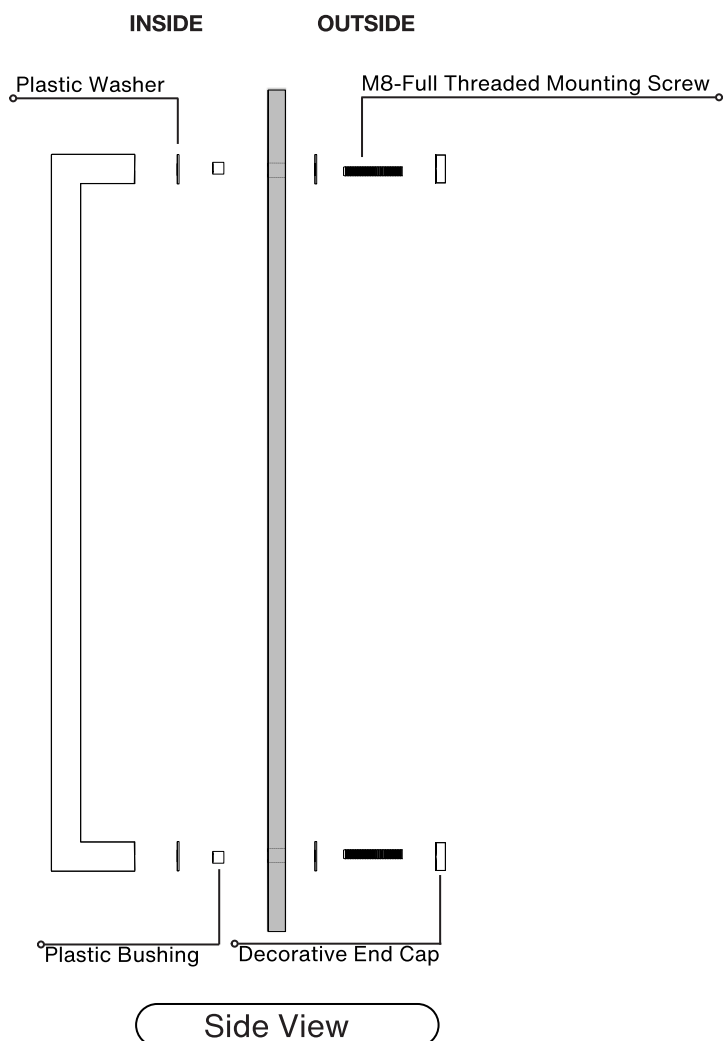
HOLE SIZE  
DIAMETER

7/16"

Not all Finishes, Lengths and Diameters are available in this style.  
For customization requests, please contact us at [info@strongarhardware.com](mailto:info@strongarhardware.com)

# Pro-Line Rectangular Series™

**One-Sided 1.5" x 1" Pull Handle**  
Decorative Thru-Bolt End Caps  
Suitable for Glass, Wood, and Metal Doors

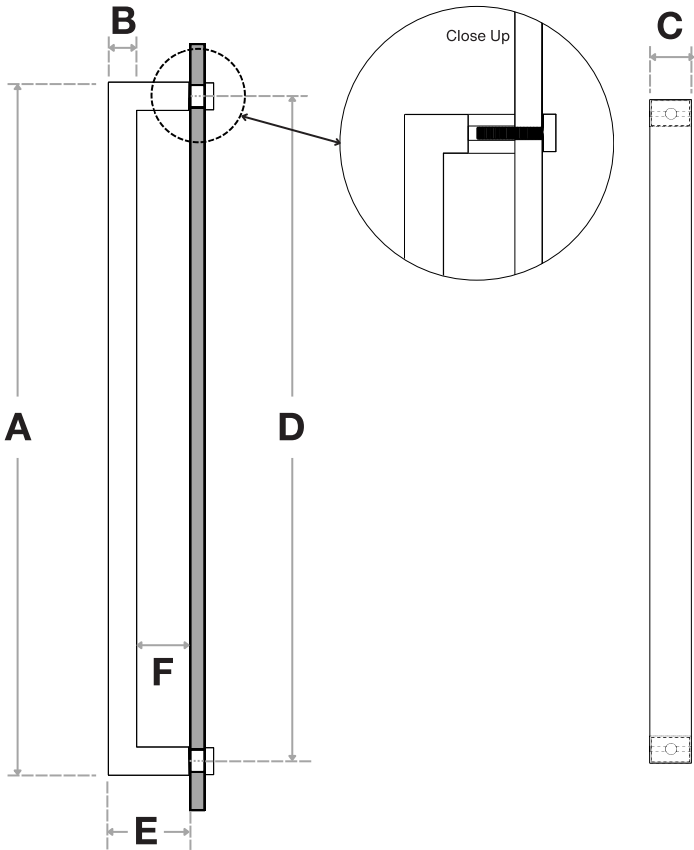


# Pro-Line Rectangular Series™

One-Sided 1.5" x 1" Pull Handle

Decorative Thru-Bolt End Caps

Suitable for Glass, Wood, and Metal Doors



Handle Length (A)	Side (B)	Front (C)	Center-to-Center (D)	Projection (E)	Clearance (F)
16"	1"	1-1/2"	15"	2-7/8"	1-7/8"
18"	1"	1-1/2"	17"	2-7/8"	1-7/8"
24"	1"	1-1/2"	23"	2-7/8"	1-7/8"
32"	1"	1-1/2"	31"	2-7/8"	1-7/8"
36"	1"	1-1/2"	35"	2-7/8"	1-7/8"
48"	1"	1-1/2"	47"	2-7/8"	1-7/8"
60"	1"	1-1/2"	59"	2-7/8"	1-7/8"
72"	1"	1-1/2"	71"	2-7/8"	1-7/8"
84"	1"	1-1/2"	83"	2-7/8"	1-7/8"
96"	1"	1-1/2"	95"	2-7/8"	1-7/8"

Side View

Front View

FINISHES (1)

- Brushed Satin = S
- Polished = P
- Matte Black Powder Coated = B
- Bronze Powder Coated = BR
- Oil Rubbed Bronze = ORB
- Satin Brass = SB
- Matte White Powder Coated = W

OVERALL LENGTHS (2)

- 16" = 16
- 18" = 18
- 24" = 24
- 32" = 32
- 36" = 36
- 48" = 48
- 60" = 60
- 72" = 72
- 84" = 84
- 96" = 96

CROSS-SECTION (3)

1-1/2" x 1" = 1510

For a complete SKU# add Finish (1), Overall length (2) and Cross-Section (3)

SH-PRO-316-RPH-DE- - -

FINISH OVERALL LENGTH CROSS SECTION

Material: 316 grade stainless steel alloy.

DOOR TYPE

GLASS DOORS  
UP TO 3/4"

WOOD & METAL DOORS.  
UP TO 4-3/4"

HOLE SIZE  
DIAMETER

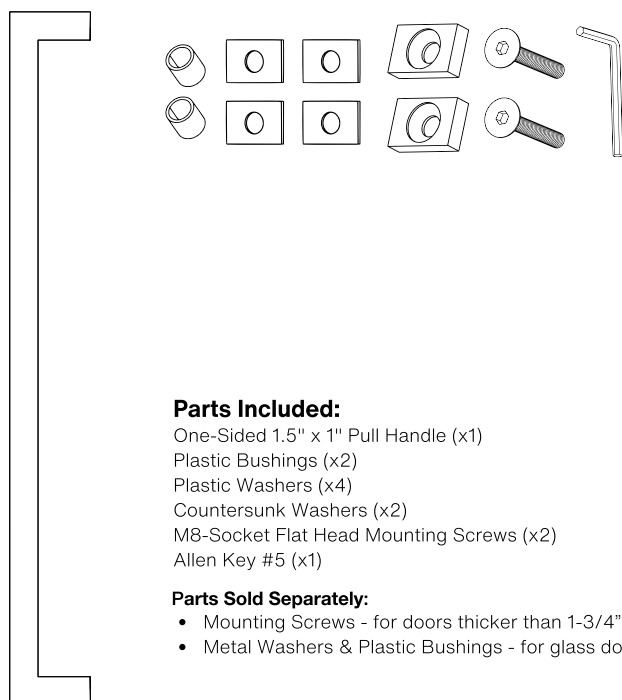
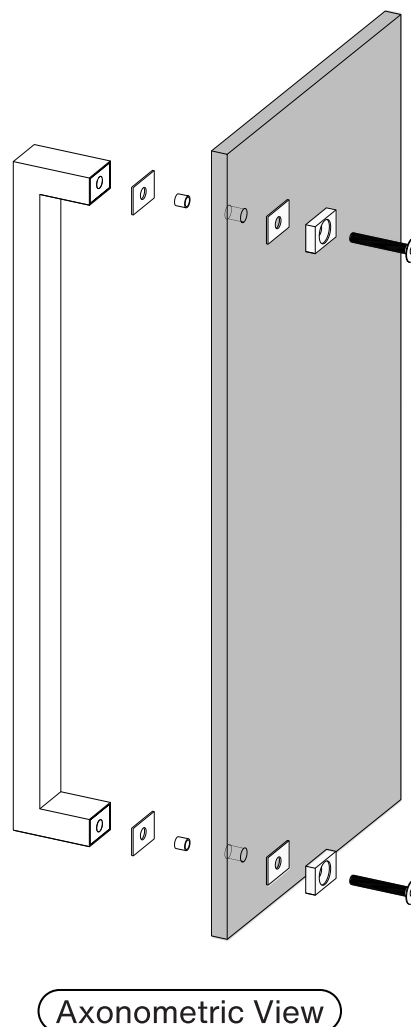
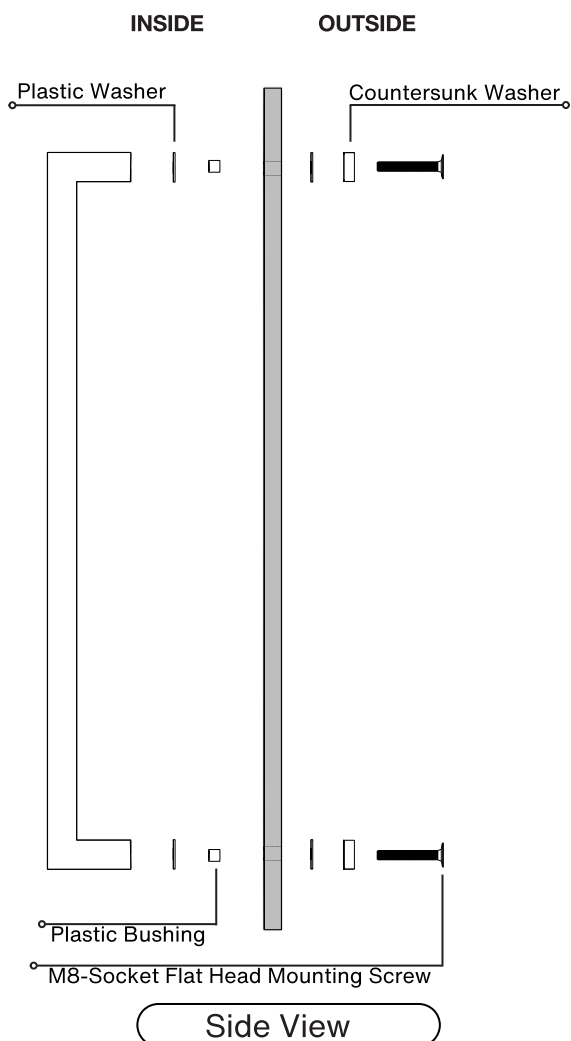
5/8"

5/16"

Not all Finishes, Lengths and Diameters are available in this style.  
For customization requests, please contact us at [info@strongarhardware.com](mailto:info@strongarhardware.com)

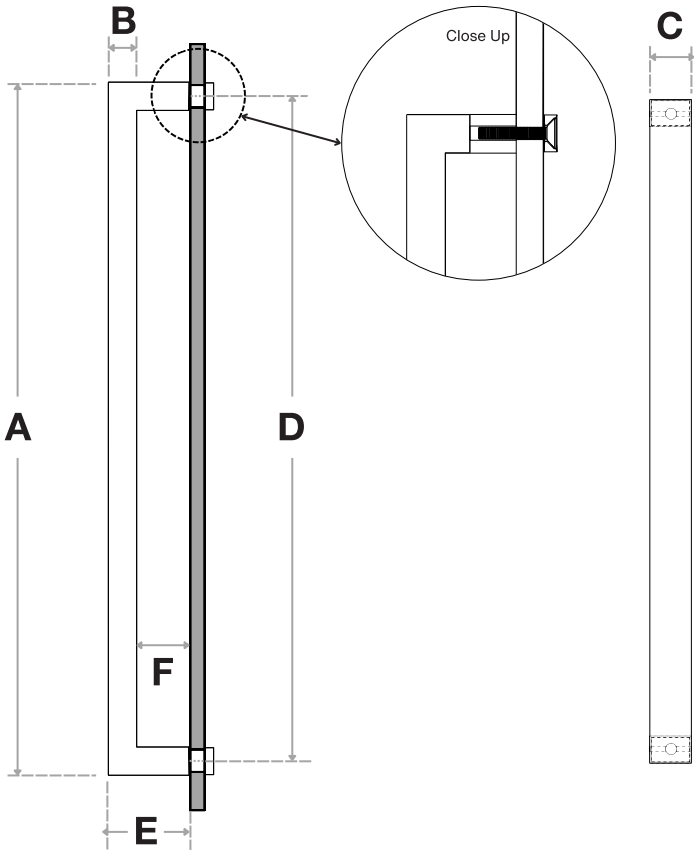
# Pro-Line Rectangular Series™

**One-Sided 1.5" x 1" Pull Handle**  
 Countersunk Thru-Bolt Washers  
 Suitable for Glass, Wood and Metal Doors



Pro-Line Rectangular Series™

One-Sided 1.5" x 1" Pull Handle  
Countersunk Thru-Bolt Washers  
Suitable for Glass, Wood and Metal Doors



Handle Length (A)	Side (B)	Front (C)	Center-to-Center (D)	Projection (E)	Clearance (F)
16"	1"	1-1/2"	15"	2-7/8"	1-7/8"
18"	1"	1-1/2"	17"	2-7/8"	1-7/8"
24"	1"	1-1/2"	23"	2-7/8"	1-7/8"
32"	1"	1-1/2"	31"	2-7/8"	1-7/8"
36"	1"	1-1/2"	35"	2-7/8"	1-7/8"
48"	1"	1-1/2"	47"	2-7/8"	1-7/8"
60"	1"	1-1/2"	59"	2-7/8"	1-7/8"
72"	1"	1-1/2"	71"	2-7/8"	1-7/8"
84"	1"	1-1/2"	83"	2-7/8"	1-7/8"
96"	1"	1-1/2"	95"	2-7/8"	1-7/8"

Side View

Front View

FINISHES (1)

- Brushed Satin = S
- Polished = P
- Matte Black Powder Coated = B
- Bronze Powder Coated = BR
- Oil Rubbed Bronze = ORB
- Satin Brass = SB
- Matte White Powder Coated = W

OVERALL LENGTHS (2)

- 16" = 16
- 18" = 18
- 24" = 24
- 32" = 32
- 36" = 36
- 48" = 48
- 60" = 60
- 72" = 72
- 84" = 84
- 96" = 96

CROSS-SECTION (3)

1-1/2" x 1" = 1510

For a complete SKU# add Finish (1), Overall length (2) and Cross-Section (3)

SH-PRO-316-RPH-CW- - -

FINISH

OVERALL LENGTH

CROSS SECTION

Material: 316 grade stainless steel alloy.

DOOR TYPE

GLASS DOORS  
UP TO 3/4"

WOOD & METAL DOORS.  
UP TO 4-3/4"

HOLE SIZE  
DIAMETER

5/8"

5/16"

Not all Finishes, Lengths and Diameters are available in this style.  
For customization requests, please contact us at [info@strongarhardware.com](mailto:info@strongarhardware.com)