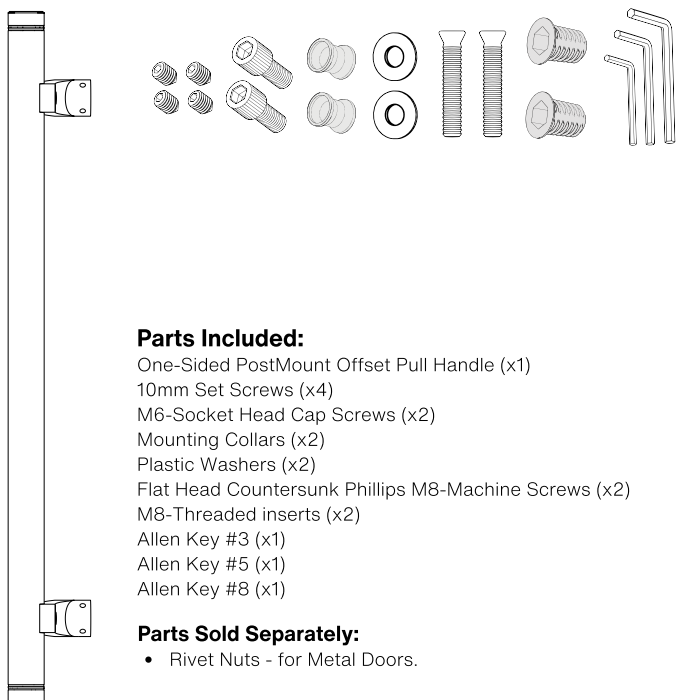
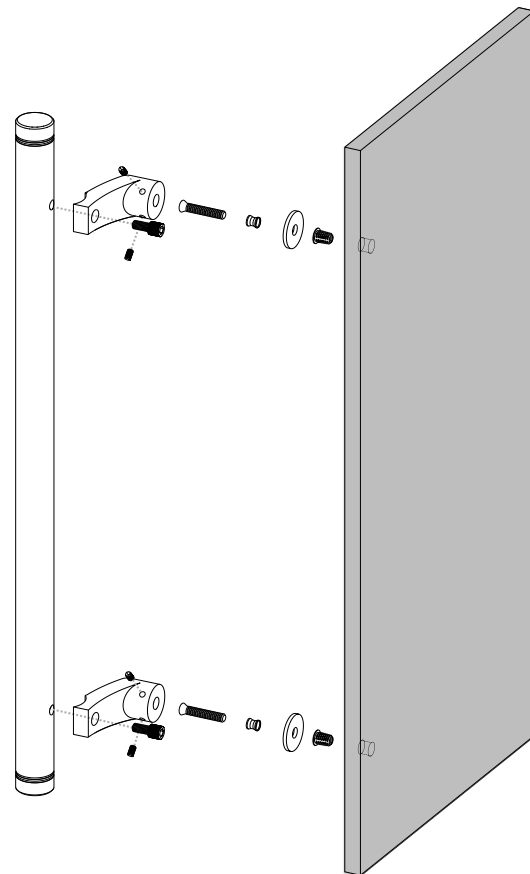
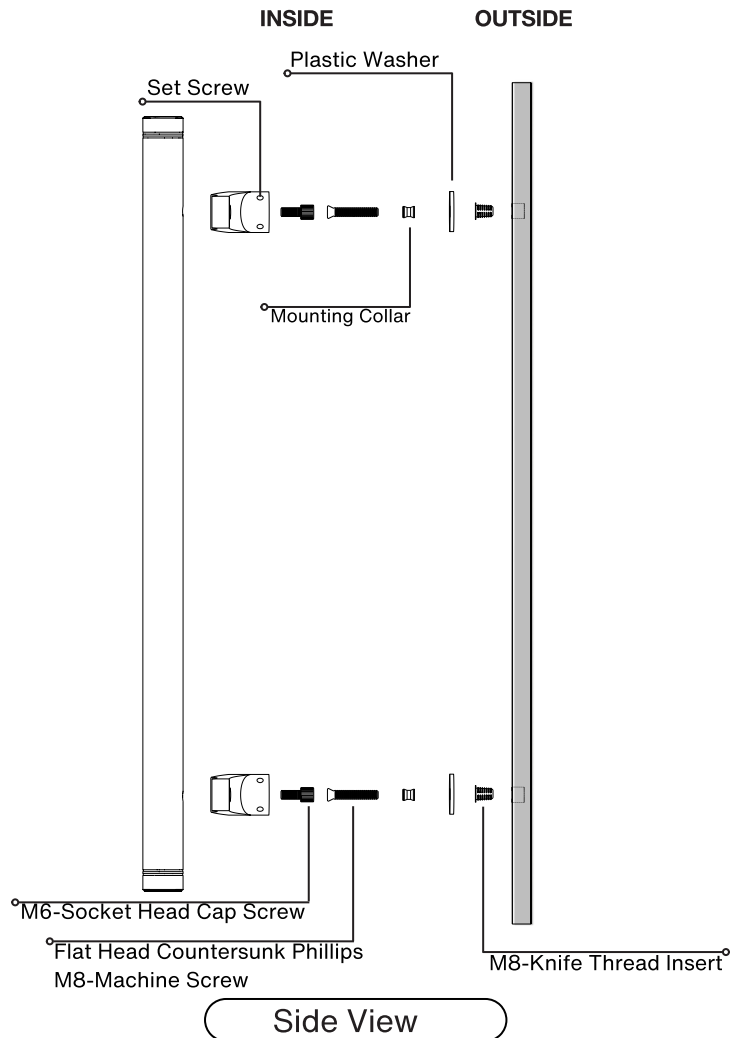


Pro-Line Grooved Series™

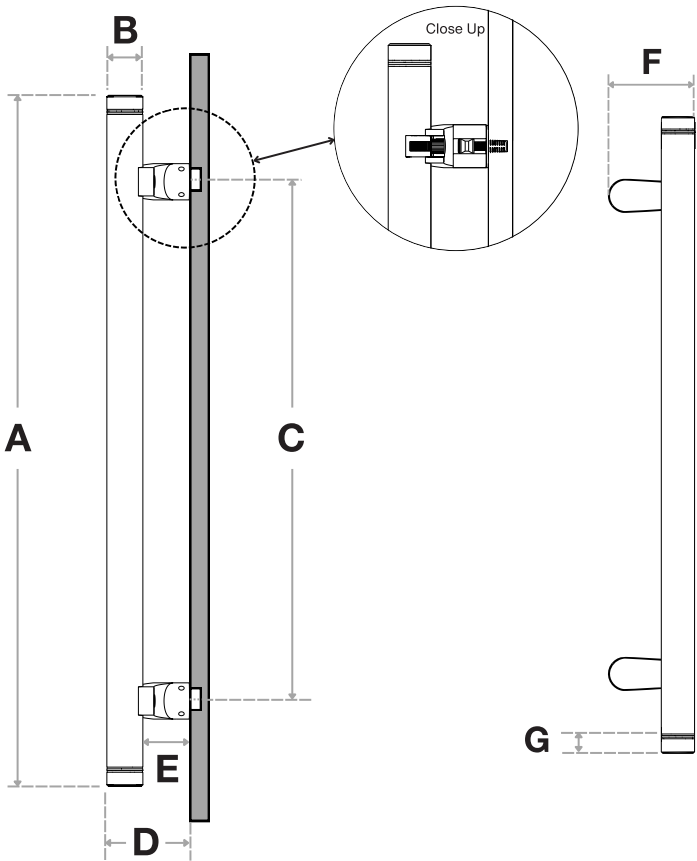
One-Sided PostMount Offset Pull Handle

Concealed Surface Mounts
Suitable for Wood and Metal Doors



Pro-Line Grooved Series™

One-Sided PostMount Offset Pull Handle
Concealed Surface Mounts
Suitable for Wood and Metal Doors



Handle Length (A)	Diameter (B)	Center-to-Center (C)	Projection (D)	Clearance (E)	Width (F)	Grooved (G)
12"	1-1/4"	6"	2-7/8"	1-5/8"	3-1/4"	11/16"
18"	1-1/4"	12"	2-7/8"	1-5/8"	3-1/4"	11/16"
24"	1-1/4"	18"	2-7/8"	1-5/8"	3-1/4"	11/16"
36"	1-1/4"	30"	2-7/8"	1-5/8"	3-1/4"	11/16"
48"	1-1/4"	42"	2-7/8"	1-5/8"	3-1/4"	11/16"
60"	1-1/4"	54"	2-7/8"	1-5/8"	3-1/4"	11/16"

Side View

Front View

FINISHES (1)

- Brushed Satin = S
- Matte Black Powder Coated = B
- Satin Brass = SB

OVERALL LENGTHS (2)

12" = 12
18" = 18
24" = 24
36" = 36
48" = 48
60" = 60

DIAMETERS (3)

1-1/4" = 1250

For a complete **SKU#** add Finish (1), Overall length (2) and Diameter (3)

SH-PRO-316-OLPN-GRO-CO- **FINISH** - **OVERALL LENGTH** - **DIAMETER**

Material: 316 grade stainless steel alloy.

DOOR TYPE

WOOD & METAL DOORS.
UP TO 4-3/4"

HOLE SIZE
DIAMETER

7/16"

Not all Finishes, Lengths and Diameters are available in this style.
For customization requests, please contact us at info@strongarhardware.com

Pro-Line Grooved Series™

One-Sided PostMount Offset Pull Handle

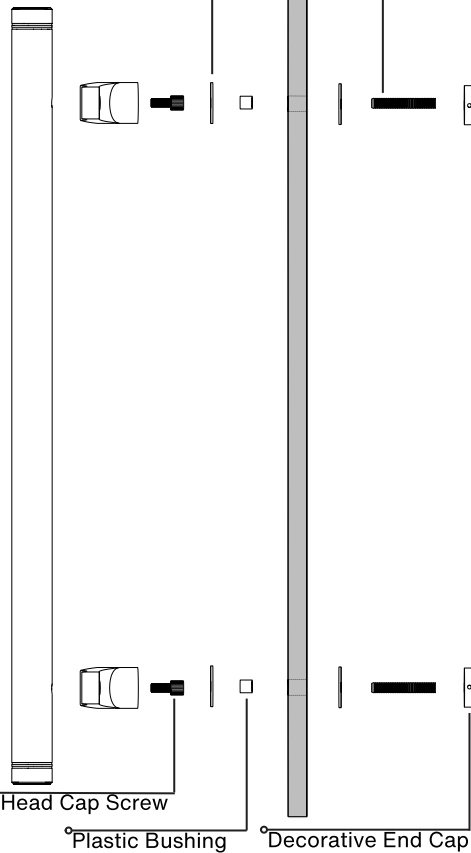
Decorative Thru-Bolt End Caps
Suitable for Glass, Wood, and Metal Doors

INSIDE

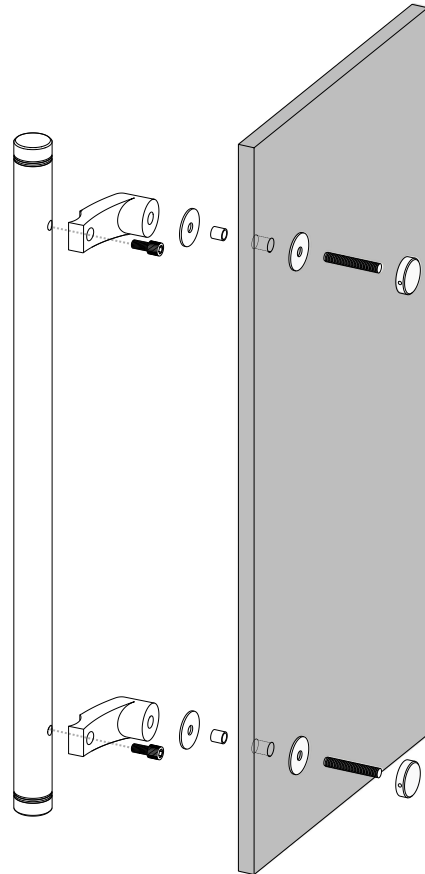
OUTSIDE

Plastic Washer

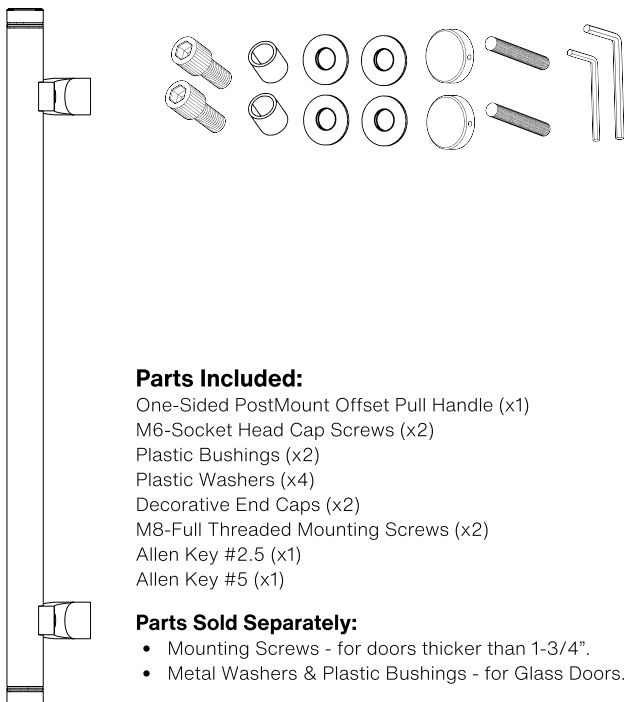
M8-Full Threaded Mounting Screw



Side View



Axonometric View



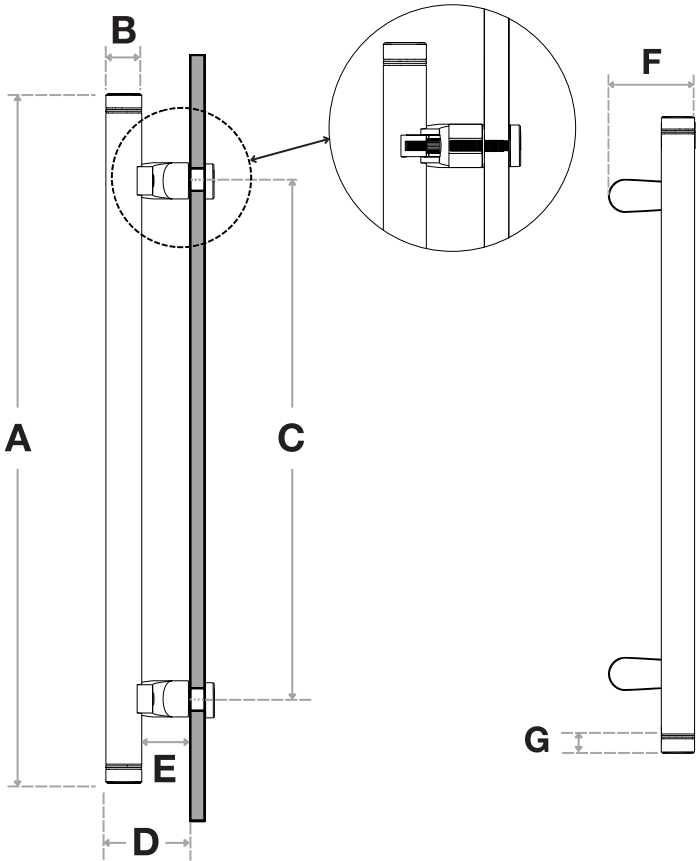
Parts Included:

- One-Sided PostMount Offset Pull Handle (x1)
- M6-Socket Head Cap Screws (x2)
- Plastic Bushings (x2)
- Plastic Washers (x4)
- Decorative End Caps (x2)
- M8-Full Threaded Mounting Screws (x2)
- Allen Key #2.5 (x1)
- Allen Key #5 (x1)

Parts Sold Separately:

- Mounting Screws - for doors thicker than 1-3/4".
- Metal Washers & Plastic Bushings - for Glass Doors.





Handle Length (A)	Diameter (B)	Center-to-Center (C)	Projection (D)	Clearance (E)	Width (F)	Grooved (G)
12"	1-1/4"	6"	2-7/8"	1-5/8"	3-1/4"	11/16"
18"	1-1/4"	12"	2-7/8"	1-5/8"	3-1/4"	11/16"
24"	1-1/4"	18"	2-7/8"	1-5/8"	3-1/4"	11/16"
36"	1-1/4"	30"	2-7/8"	1-5/8"	3-1/4"	11/16"
48"	1-1/4"	42"	2-7/8"	1-5/8"	3-1/4"	11/16"
60"	1-1/4"	54"	2-7/8"	1-5/8"	3-1/4"	11/16"

Side View

Front View

FINISHES (1)

- Brushed Satin = S
- Matte Black Powder Coated = B
- Satin Brass = SB

OVERALL LENGTHS (2)

12" = 12
18" = 18
24" = 24
36" = 36
48" = 48
60" = 60

DIAMETERS (3)

1-1/4" = 1250

For a complete SKU# add Finish (1), Overall length (2) and Diameter (3)

SH-PRO-316-OLPN-GRO-DE- - -
FINISH OVERALL LENGTH DIAMETER

Material: 316 grade stainless steel alloy.

DOOR TYPE

GLASS DOORS
UP TO 3/4"

WOOD & METAL DOORS.
UP TO 4-3/4"

HOLE SIZE
DIAMETER

5/8"

5/16"

Not all Finishes, Lengths and Diameters are available in this style.
For customization requests, please contact us at info@strongarhardware.com

Pro-Line Grooved Series™

One-Sided PostMount Offset Pull Handle
Countersunk Thru-Bolt Washers
Suitable for Glass, Wood and Metal Doors

INSIDE

OUTSIDE

Plastic Washer

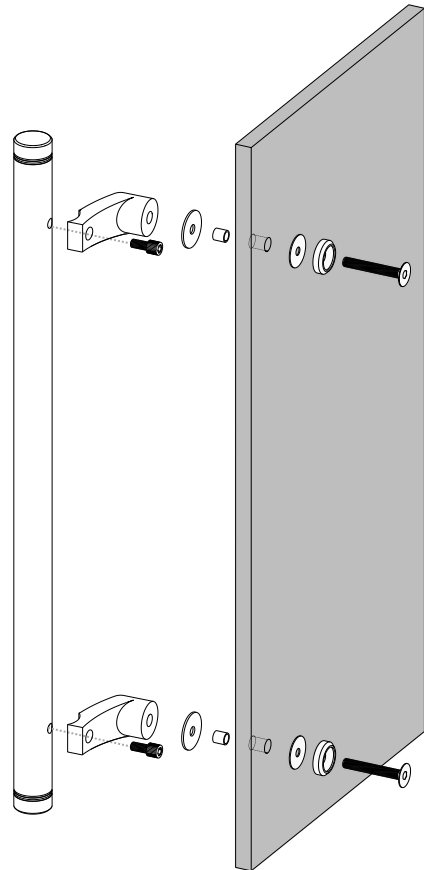
Countersunk Washer

Plastic Bushing

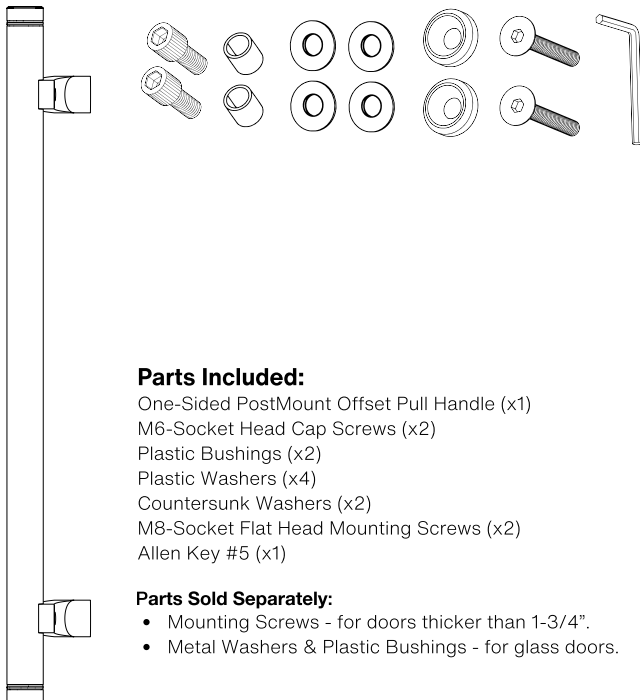
M6-Socket Head Cap Screw

M8-Socket Flat Head Mounting Screw

Side View



Axonometric View



Parts Included:

- One-Sided PostMount Offset Pull Handle (x1)
- M6-Socket Head Cap Screws (x2)
- Plastic Bushings (x2)
- Plastic Washers (x4)
- Countersunk Washers (x2)
- M8-Socket Flat Head Mounting Screws (x2)
- Allen Key #5 (x1)

Parts Sold Separately:

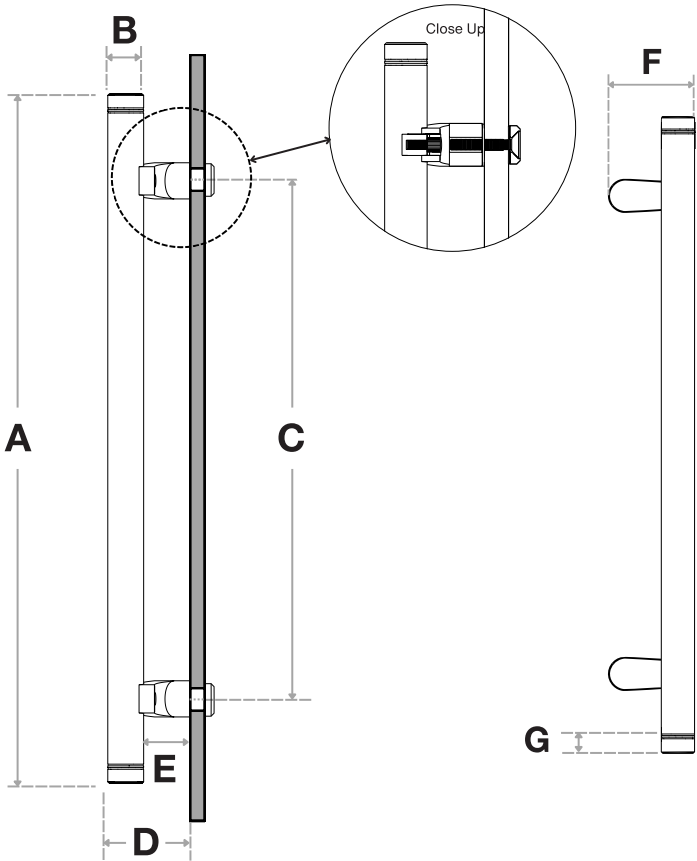
- Mounting Screws - for doors thicker than 1-3/4".
- Metal Washers & Plastic Bushings - for glass doors.



Pro-Line Grooved Series™

One-Sided PostMount Offset Pull Handle

Countersunk Thru-Bolt Washers
Suitable for Glass, Wood and Metal Doors



Handle Length (A)	Diameter (B)	Center-to-Center (C)	Projection (D)	Clearance (E)	Width (F)	Grooved (G)
12"	1-1/4"	6"	2-7/8"	1-5/8"	3-1/4"	11/16"
18"	1-1/4"	12"	2-7/8"	1-5/8"	3-1/4"	11/16"
24"	1-1/4"	18"	2-7/8"	1-5/8"	3-1/4"	11/16"
36"	1-1/4"	30"	2-7/8"	1-5/8"	3-1/4"	11/16"
48"	1-1/4"	42"	2-7/8"	1-5/8"	3-1/4"	11/16"
60"	1-1/4"	54"	2-7/8"	1-5/8"	3-1/4"	11/16"

Side View

Front View

FINISHES (1)

- Brushed Satin = S
- Matte Black Powder Coated = B
- Satin Brass = SB

OVERALL LENGTHS (2)

- 12" = 12
- 18" = 18
- 24" = 24
- 36" = 36
- 48" = 48
- 60" = 60

DIAMETERS (3)

1-1/4" = 1250

For a complete **SKU#** add Finish **(1)**, Overall length **(2)** and Diameter **(3)**

SH-PRO-316-OLPN-GRO-CW-

FINISH

-

OVERALL LENGTH

-

DIAMETER

Material: 316 grade stainless steel alloy.

DOOR TYPE

GLASS DOORS
UP TO 3/4"

WOOD & METAL DOORS.
UP TO 4-3/4"

HOLE SIZE
DIAMETER

5/8"

5/16"

Not all Finishes, Lengths and Diameters are available in this style.
For customization requests, please contact us at info@strongarhardware.com