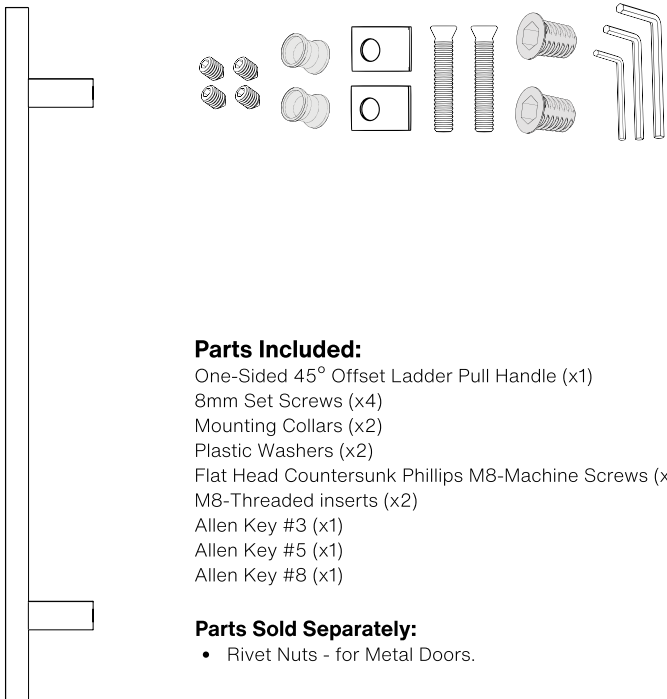
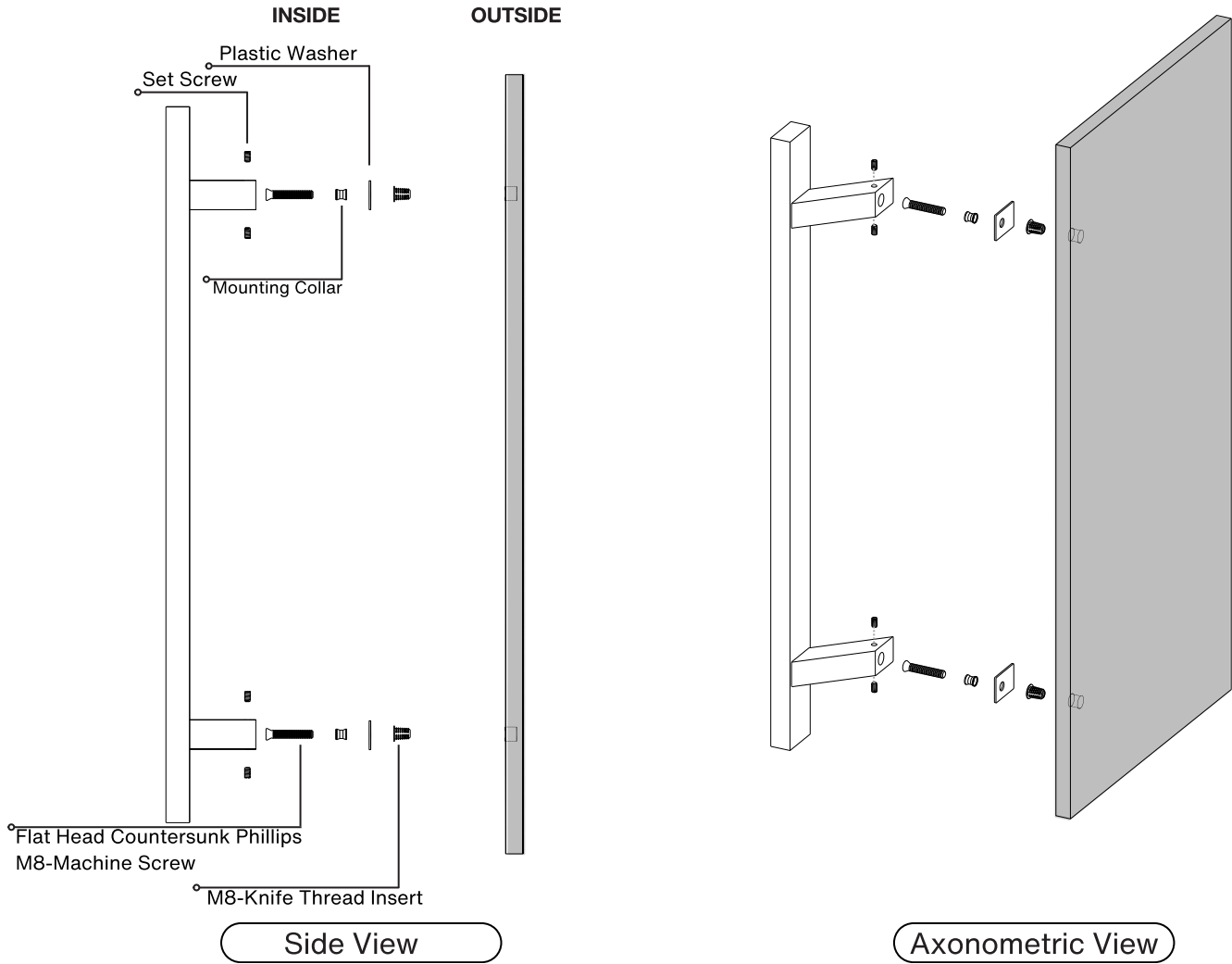
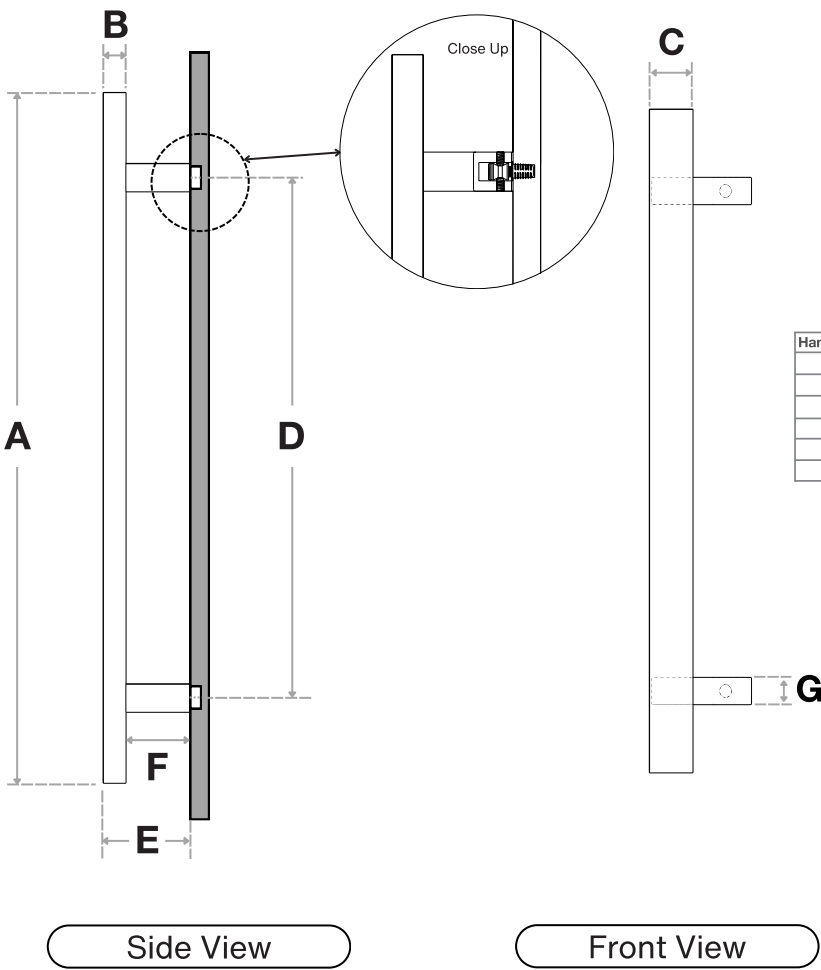


Pro-Line Flat Bar Series™

One-Sided 45° Offset Ladder Pull Handle
Concealed Surface Mounts
Suitable for Wood and Metal Doors





Handle Length (A)	Side (B)	Front (C)	Center-to-Center (D)	Projection (E)	Clearance (F)	Post Width (G)
12"	25/64"	1-9/16"	6"	3"	2-1/4"	1"
18"	25/64"	1-9/16"	12"	3"	2-1/4"	1"
24"	25/64"	1-9/16"	18"	3"	2-1/4"	1"
36"	25/64"	1-9/16"	30"	3"	2-1/4"	1"
48"	25/64"	1-9/16"	42"	3"	2-1/4"	1"
60"	25/64"	1-9/16"	54"	3"	2-1/4"	1"

FINISHES (1)

- Brushed Satin = S
- Matte Black Powder Coated = B

OVERALL LENGTHS (2)

12" = 12
18" = 18
24" = 24
36" = 36
48" = 48
60" = 60

CROSS-SECTION (3)

1.58" x 0.79" = 4020

For a complete SKU# add Finish (1), Overall length (2) and Cross-Section (3)

SH-PRO-316-OFFB-CO- - -

FINISH

OVERALL LENGTH

CROSS SECTION

Material: 316 grade stainless steel alloy.

DOOR TYPE

WOOD & METAL DOORS.
UP TO 4-3/4"

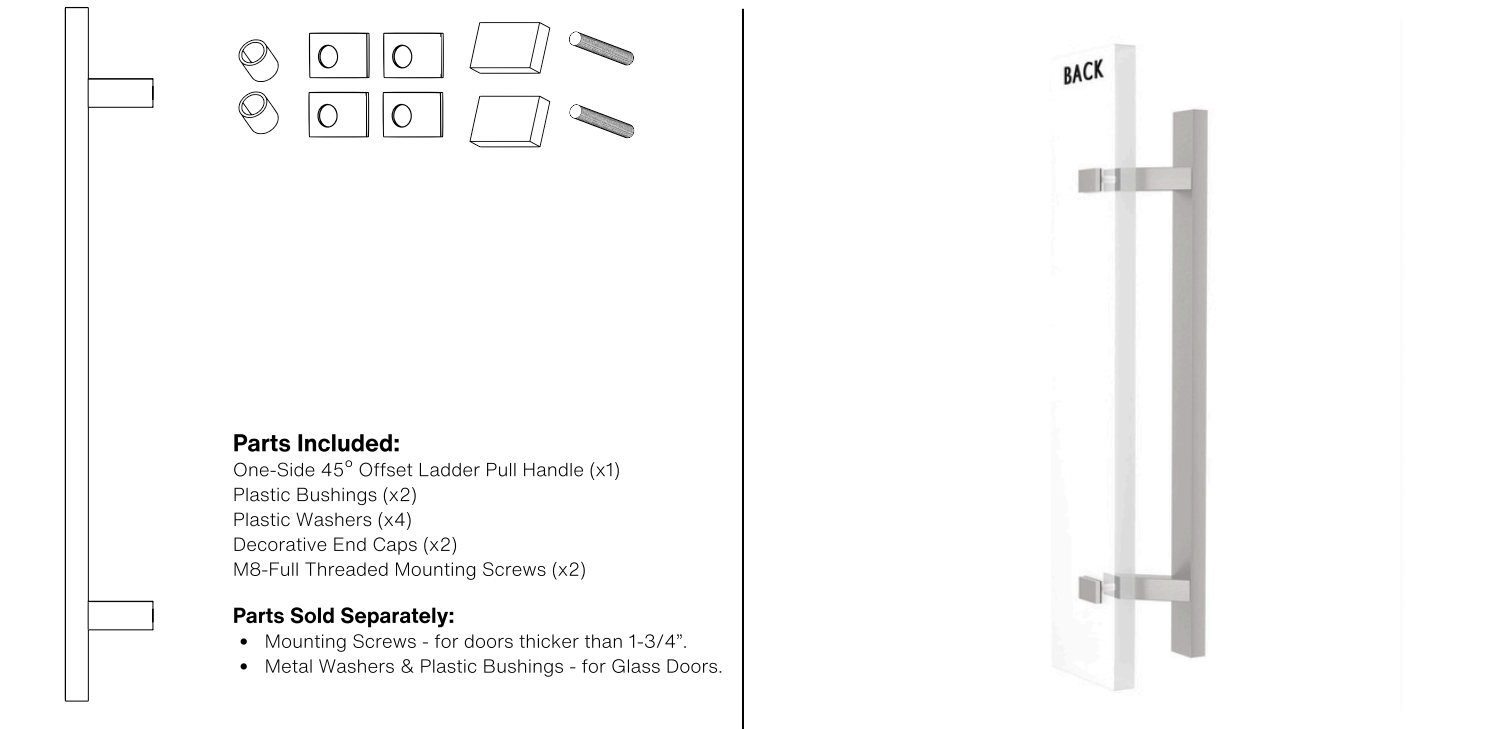
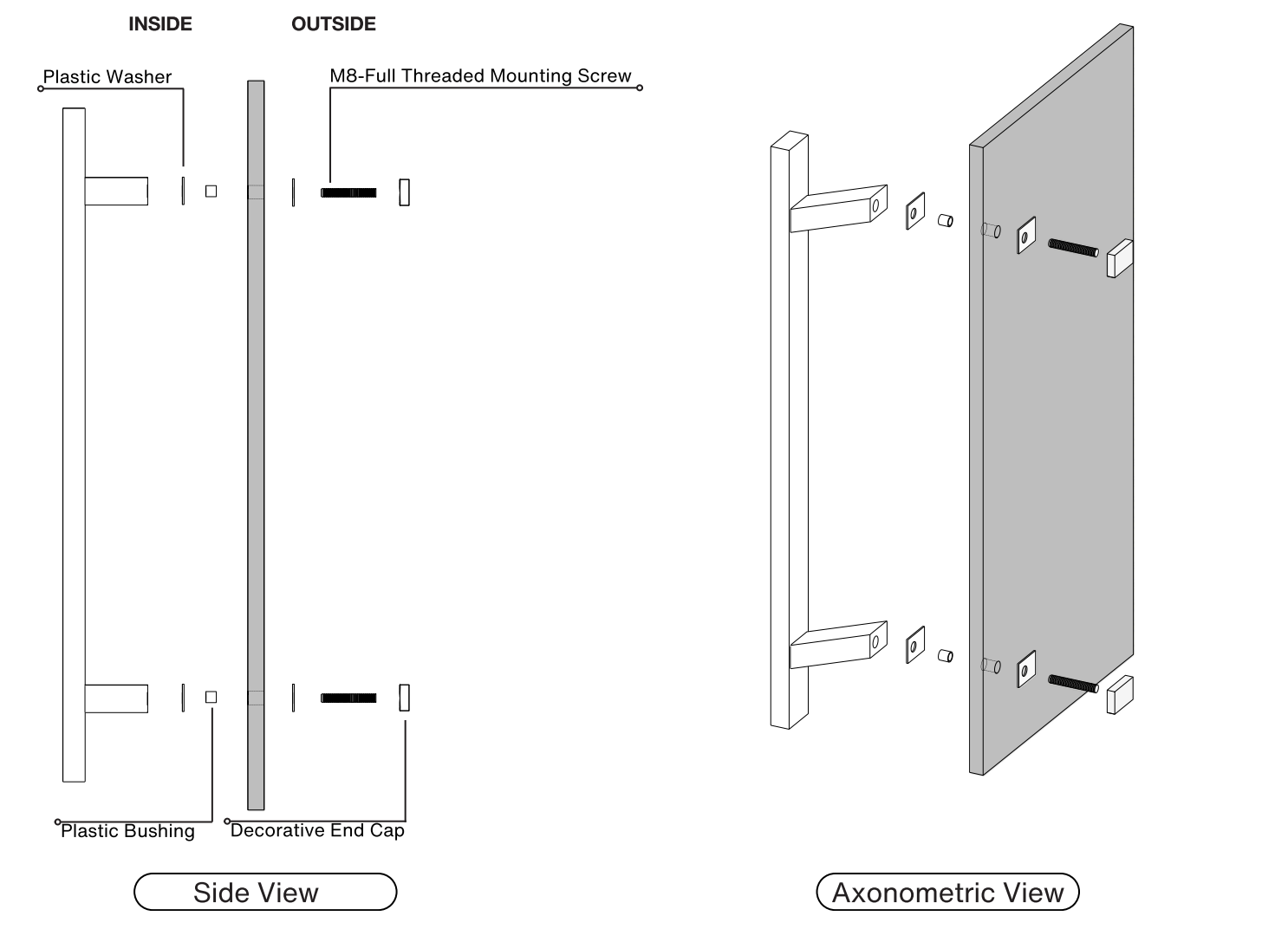
HOLE SIZE
DIAMETER

7/16"

Not all Finishes, Lengths and Diameters are available in this style.
For customization requests, please contact us at info@strongarhardware.com

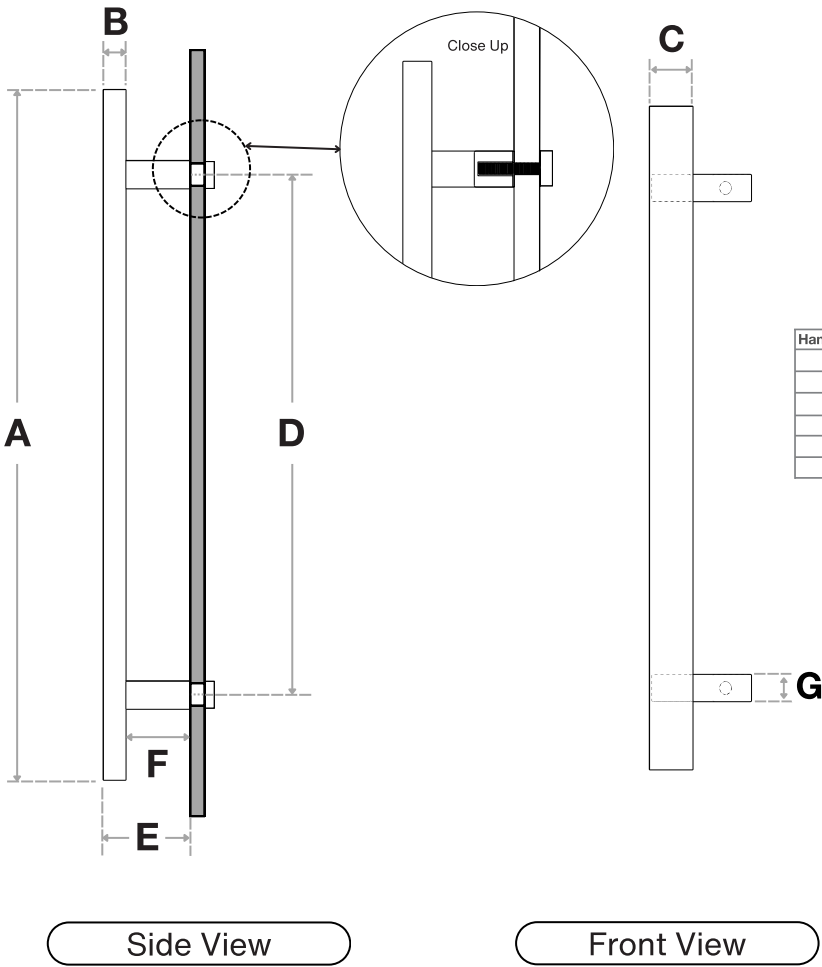
Pro-Line Flat Bar Series™

One-Sided 45° Offset Ladder Pull Handle
Decorative Thru-Bolt End Caps
Suitable for Glass, Wood, and Metal Doors



Pro-Line Flat Bar Series™

One-Sided 45° Offset Ladder Pull Handle
Decorative Thru-Bolt End Caps
Suitable for Glass, Wood, and Metal Doors



Handle Length (A)	Side (B)	Front (C)	Center-to-Center (D)	Projection (E)	Clearance (F)	Post Width (G)
12"	25/64"	1-9/16"	6"	3"	2-1/4"	1"
18"	25/64"	1-9/16"	12"	3"	2-1/4"	1"
24"	25/64"	1-9/16"	18"	3"	2-1/4"	1"
36"	25/64"	1-9/16"	30"	3"	2-1/4"	1"
48"	25/64"	1-9/16"	42"	3"	2-1/4"	1"
60"	25/64"	1-9/16"	54"	3"	2-1/4"	1"

FINISHES (1)

- Brushed Satin = S
- Matte Black Powder Coated = B

OVERALL LENGTHS (2)

- 12" = 12
- 18" = 18
- 24" = 24
- 36" = 36
- 48" = 48
- 60" = 60

CROSS-SECTION (3)

1.58" x 0.79" = 4020

For a complete **SKU#** add Finish (1), Overall length (2) and Cross-Section (3)

SH-PRO-316-OFFB-DE-

FINISH

-

OVERALL LENGTH

-

CROSS SECTION

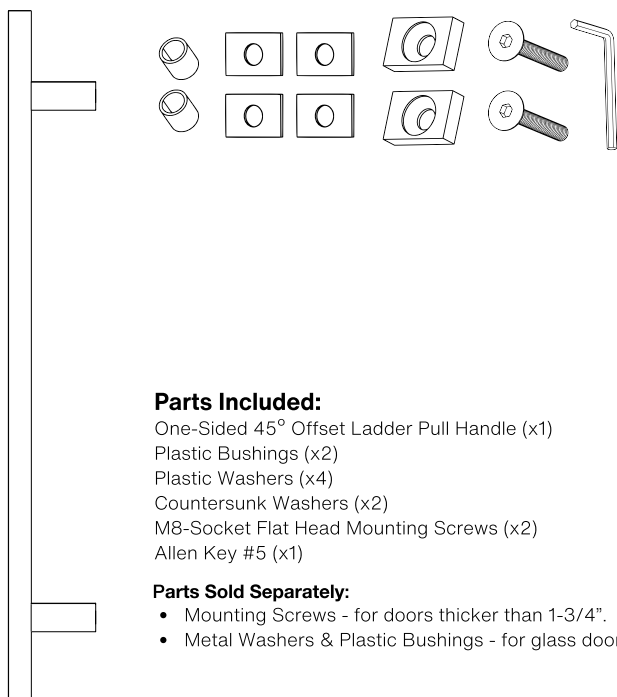
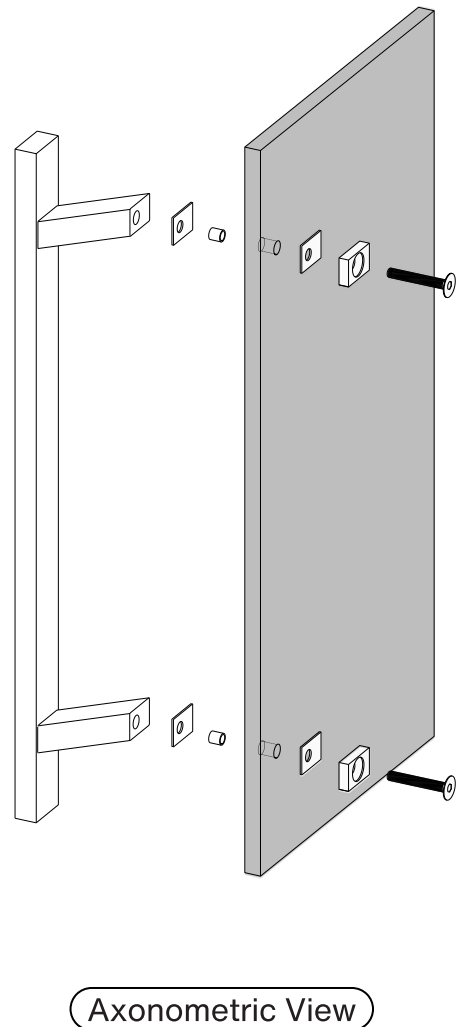
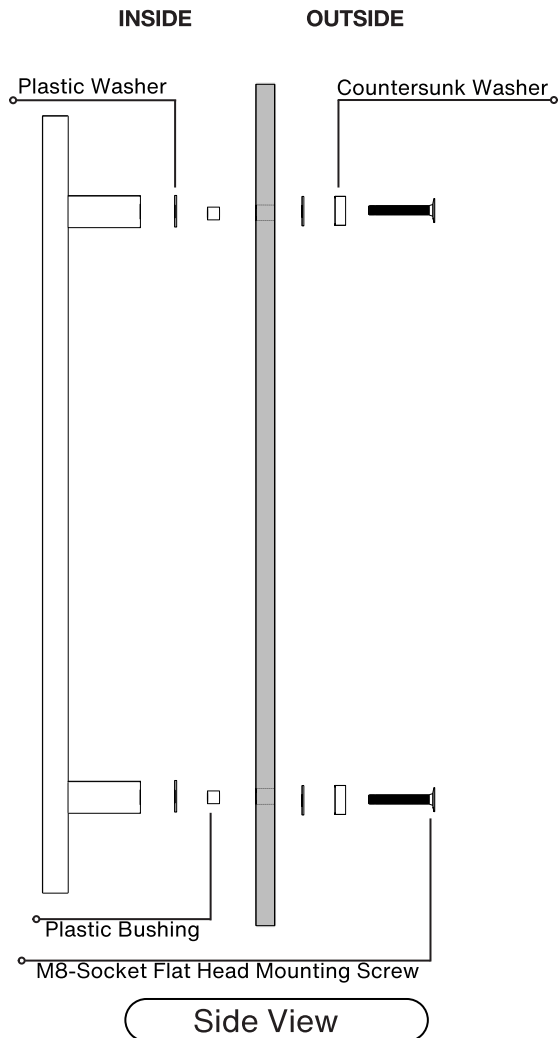
Material: 316 grade stainless steel alloy.

DOOR TYPE	GLASS DOORS UP TO 3/4"	WOOD & METAL DOORS. UP TO 4-3/4"
HOLE SIZE DIAMETER	5/8"	5/16"

Not all Finishes, Lengths and Diameters are available in this style.
For customization requests, please contact us at info@strongarhardware.com

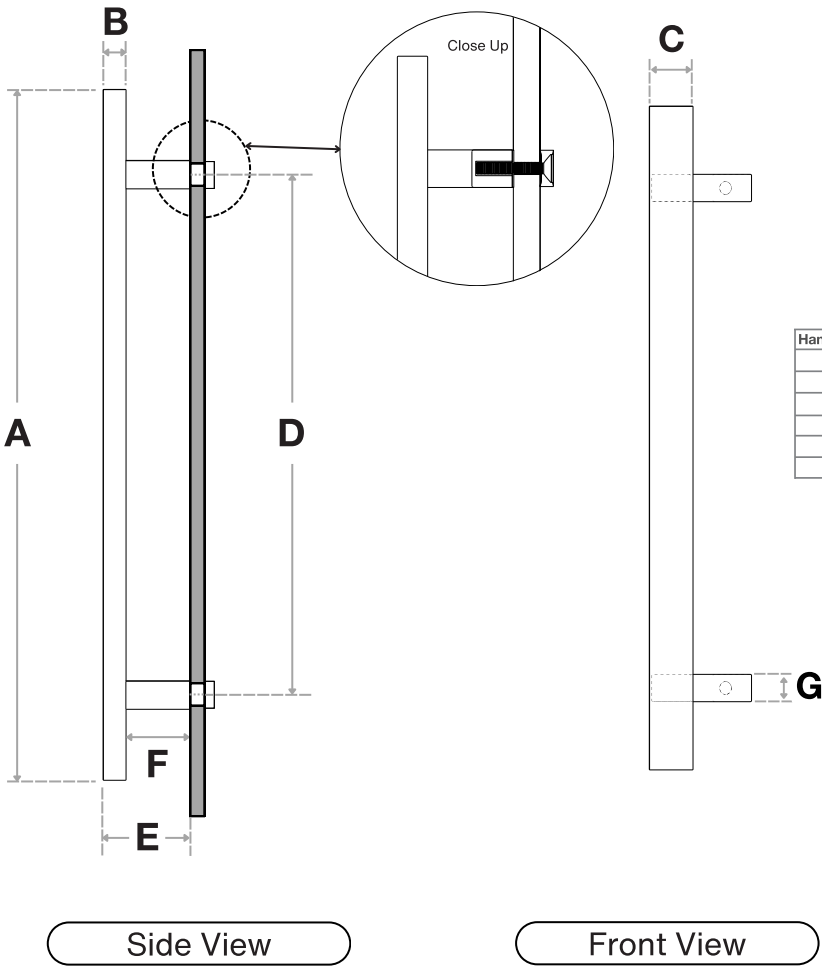
Pro-Line Flat Bar Series™

One-Sided 45° Offset Ladder Pull Handle
Countersunk Thru-Bolt Washers
Suitable for Glass, Wood and Metal Doors



Pro-Line Flat Bar Series™

One-Sided 45° Offset Ladder Pull Handle
Countersunk Thru-Bolt Washers
Suitable for Glass, Wood and Metal Doors



Handle Length (A)	Side (B)	Front (C)	Center-to-Center (D)	Projection (E)	Clearance (F)	Post Width (G)
12"	25/64"	1-9/16"	6"	3"	2-1/4"	1"
18"	25/64"	1-9/16"	12"	3"	2-1/4"	1"
24"	25/64"	1-9/16"	18"	3"	2-1/4"	1"
36"	25/64"	1-9/16"	30"	3"	2-1/4"	1"
48"	25/64"	1-9/16"	42"	3"	2-1/4"	1"
60"	25/64"	1-9/16"	54"	3"	2-1/4"	1"

FINISHES (1)

- Brushed Satin = S
- Matte Black Powder Coated = B

OVERALL LENGTHS (2)

12" = 12
18" = 18
24" = 24
36" = 36
48" = 48
60" = 60

CROSS-SECTION (3)

1.58" x 0.79" = 4020

For a complete SKU# add Finish (1), Overall length (2) and Cross-Section (3)

SH-PRO-316-OFFB-CW- - -

FINISHOVERALL LENGTHCROSS SECTION

Material: 316 grade stainless steel alloy.

DOOR TYPE	GLASS DOORS UP TO 3/4"	WOOD & METAL DOORS. UP TO 4-3/4"
HOLE SIZE DIAMETER	5/8"	5/16"

Not all Finishes, Lengths and Diameters are available in this style.
For customization requests, please contact us at info@strongarhardware.com