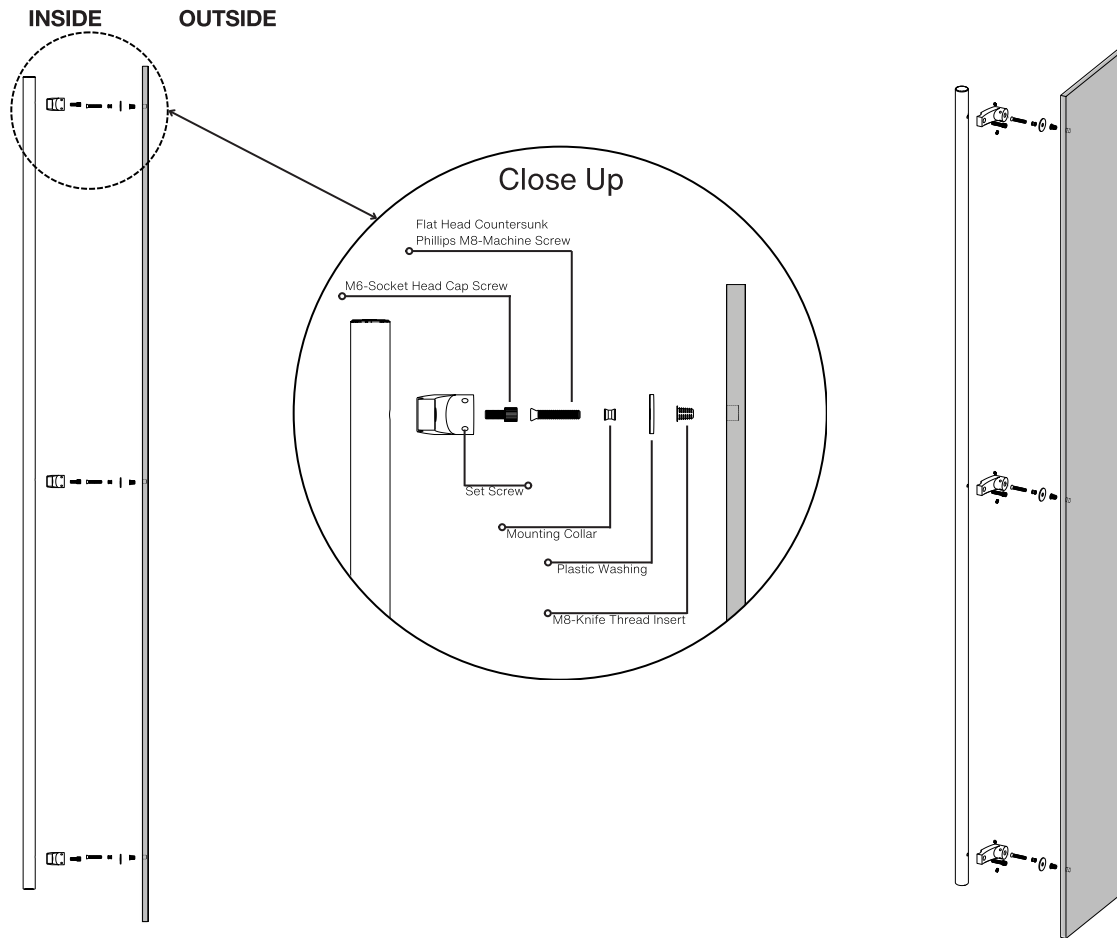


Pro-Line Series™

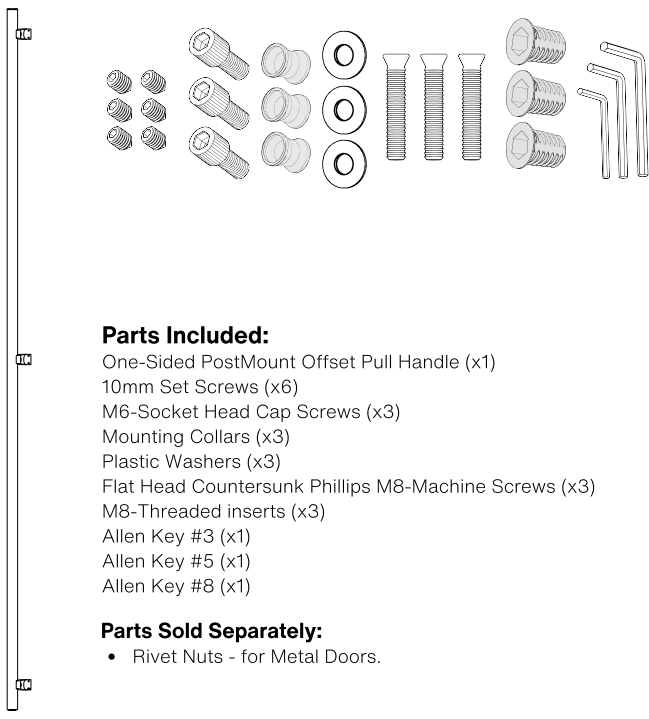
One-sided 84-inch PostMount Offset Ladder Pull Handle
with 3-hole mounting

Concealed Surface Mounts
Suitable for Wood and Metal Doors



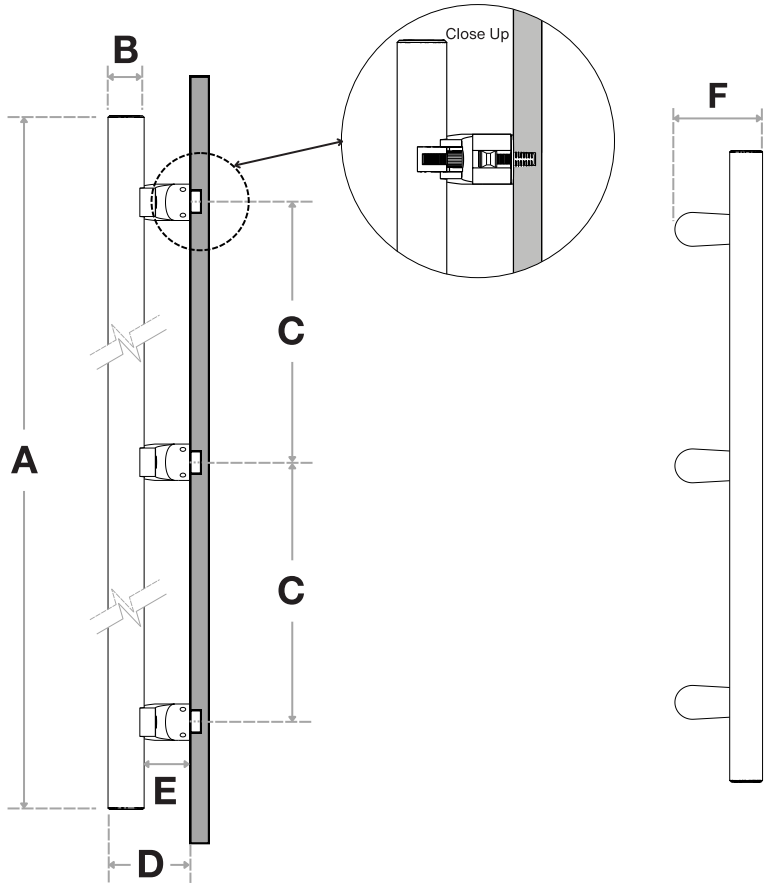
Side View

Axonometric View



Pro-Line Series™

Concealed Surface Mounts
Suitable for Wood and Metal Doors



Handle Length (A)	Diameter (B)	Center-to-Center (C)	Projection (D)	Clearance (E)	Width (F)
84"	1-1/4"	39" + 39"	2-7/8"	1-5/8"	3-1/4"

Side View

Front View

FINISHES (1)

- Brushed Satin = S
- Polished = P
- Matte Black Powder Coated = B
- Satin Brass = SB

OVERALL LENGTHS (2)

84" = 84

DIAMETERS (3)

1-1/4" = 1250

For a complete **SKU#** add Finish (1), Overall length (2) and Diameter (3)

SH-PRO-316-OLPN-3P-CO- - -

FINISH OVERALL LENGTH DIAMETER

Material: 316 grade stainless steel alloy.

DOOR TYPE

WOOD & METAL DOORS.
UP TO 4-3/4"

HOLE SIZE
DIAMETER

7/16"

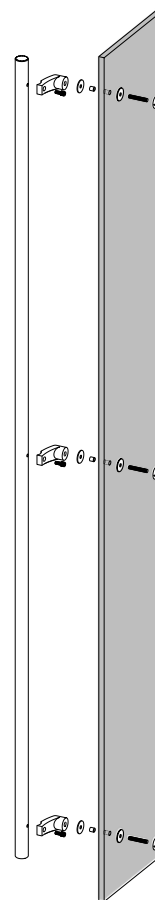
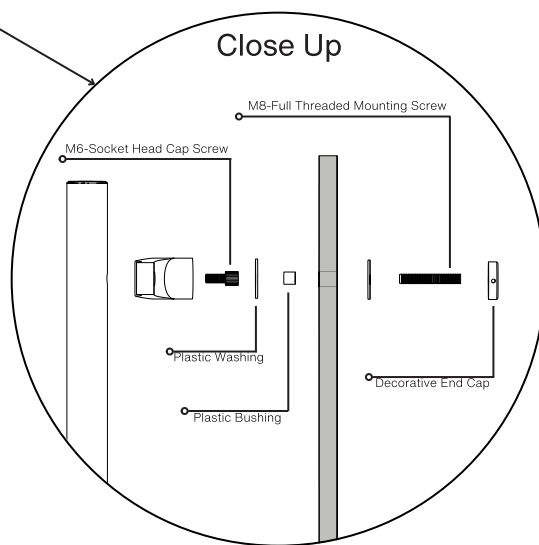
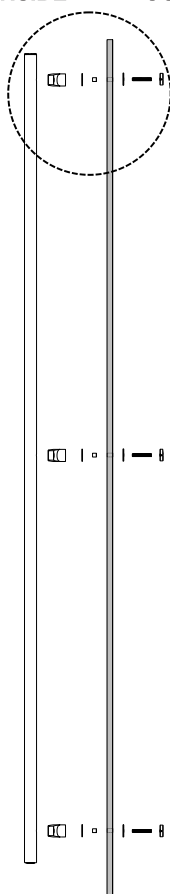
Not all Finishes, Lengths and Diameters are available in this style.
For customization requests, please contact us at info@strongarhardware.com

Pro-Line Series™

One-sided 84-inch PostMount Offset Ladder Pull Handle
with 3-hole mounting

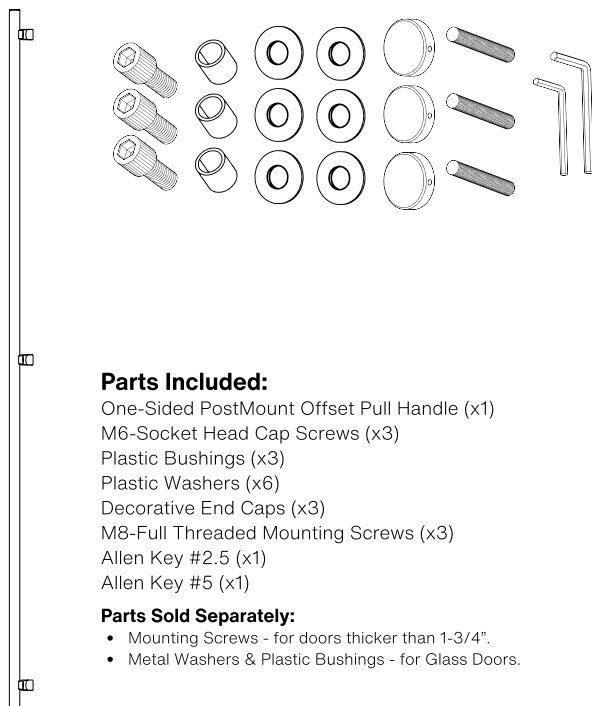
Decorative Thru-Bolt End Caps
Suitable for Glass, Wood, and Metal Doors

INSIDE OUTSIDE



Side View

Axonometric View



Parts Included:

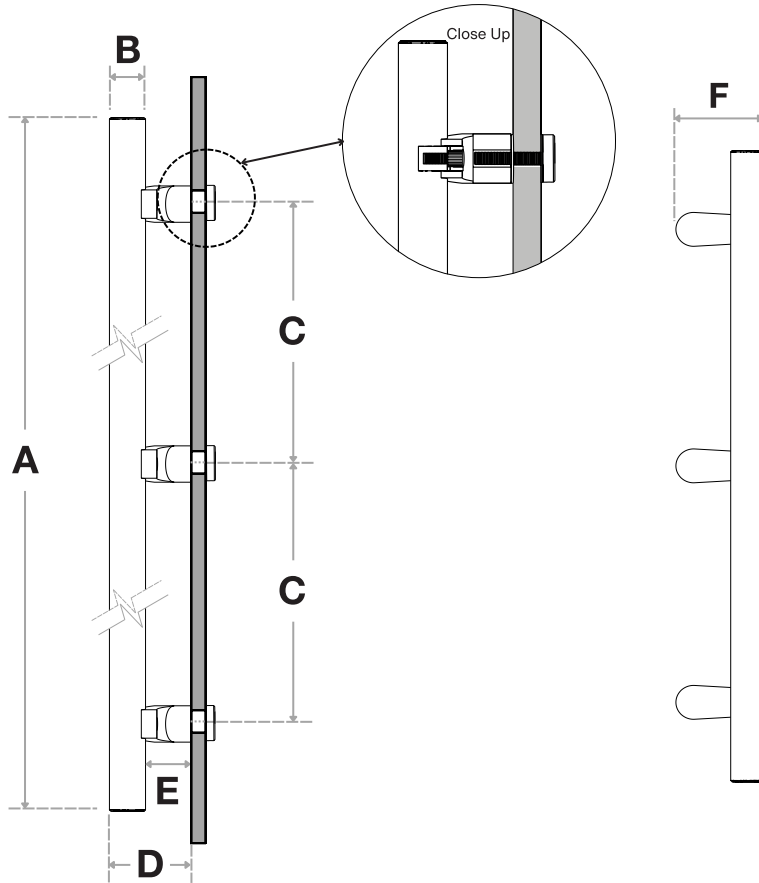
- One-Sided PostMount Offset Pull Handle (x1)
- M6-Socket Head Cap Screws (x3)
- Plastic Bushings (x3)
- Plastic Washers (x6)
- Decorative End Caps (x3)
- M8-Full Threaded Mounting Screws (x3)
- Allen Key #2.5 (x1)
- Allen Key #5 (x1)

Parts Sold Separately:

- Mounting Screws - for doors thicker than 1-3/4".
- Metal Washers & Plastic Bushings - for Glass Doors.



Pro-Line Series™



Handle Length (A)	Diameter (B)	Center-to-Center (C)	Projection (D)	Clearance (E)	Width (F)
84"	1-1/4"	39" + 39"	2-7/8"	1-5/8"	3-1/4"

Side View

Front View

FINISHES (1)

- Brushed Satin = S
- Polished = P
- Matte Black Powder Coated = B
- Satin Brass = SB

OVERALL LENGTHS (2)

84" = 84

DIAMETERS (3)

1-1/4" = 1250

For a complete **SKU#** add Finish (1), Overall length (2) and Diameter (3)

SH-PRO-316-OLPN-3P-DE- FINISH - OVERALL LENGTH - DIAMETER

Material: 316 grade stainless steel alloy.

DOOR TYPE

GLASS DOORS
UP TO 3/4"

WOOD & METAL DOORS.
UP TO 4-3/4"

HOLE SIZE
DIAMETER

5/8"

5/16"

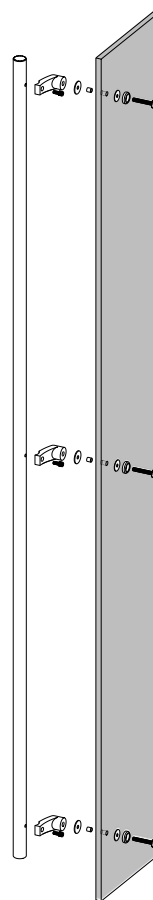
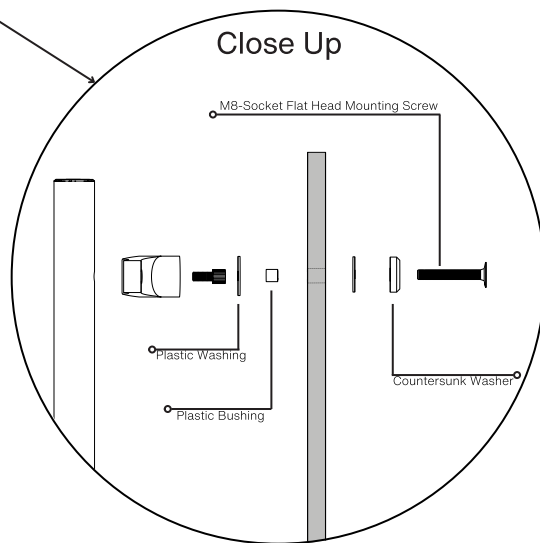
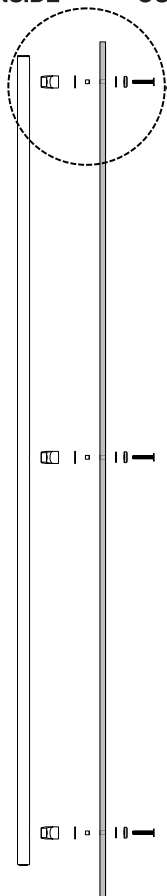
Not all Finishes, Lengths and Diameters are available in this style.
For customization requests, please contact us at info@strongarhardware.com

Pro-Line Series™

One-sided 84-inch PostMount Offset Ladder Pull Handle with 3-hole mounting

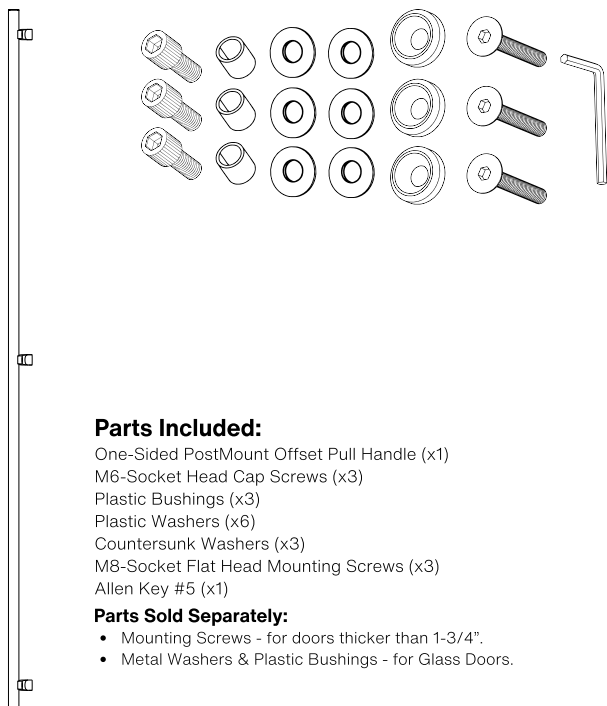
Countersunk Thru-Bolt Washers
Suitable for Glass, Wood and Metal Doors

INSIDE OUTSIDE



Side View

Axonometric View



Parts Included:

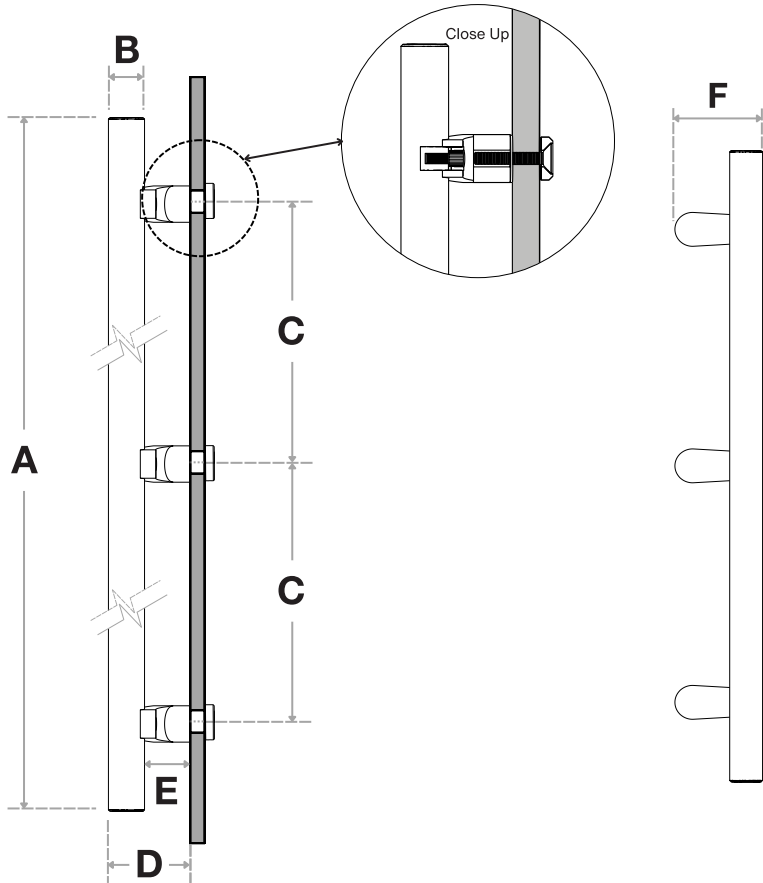
- One-Sided PostMount Offset Pull Handle (x1)
- M6-Socket Head Cap Screws (x3)
- Plastic Bushings (x3)
- Plastic Washers (x6)
- Countersunk Washers (x3)
- M8-Socket Flat Head Mounting Screws (x3)
- Allen Key #5 (x1)

Parts Sold Separately:

- Mounting Screws - for doors thicker than 1-3/4".
- Metal Washers & Plastic Bushings - for Glass Doors.



Pro-Line Series™



Handle Length (A)	Diameter (B)	Center-to-Center (C)	Projection (D)	Clearance (E)	Width (F)
84"	1-1/4"	39" + 39"	2-7/8"	1-5/8"	3-1/4"

Side View

FINISHES (1)

- Brushed Satin = S
- Polished = P
- Matte Black Powder Coated = B
- Satin Brass = SB

OVERALL LENGTHS (2)

84" = 84

DIAMETERS (3)

1-1/4" = 1250

For a complete **SKU#** add Finish **(1)**, Overall length **(2)** and Diameter **(3)**

SH-PRO-316-OLPN-3P-CW- **FINISH** - **OVERALL LENGTH** - **DIAMETER**

Material: 316 grade stainless steel alloy.

DOOR TYPE

GLASS DOORS
UP TO 3/4"

WOOD & METAL DOORS.
UP TO 4-3/4"

HOLE SIZE
DIAMETER

5/8"

5/16"

Not all Finishes, Lengths and Diameters are available in this style.
For customization requests, please contact us at info@strongarhardware.com