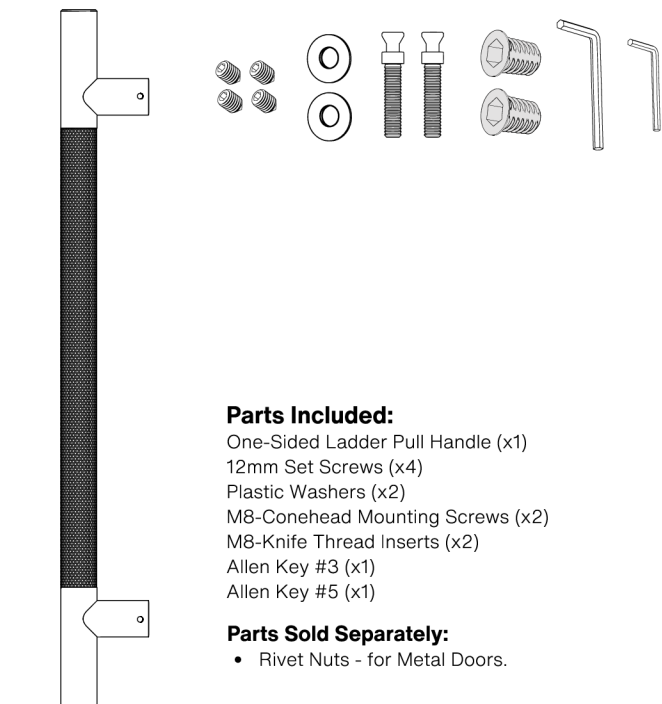
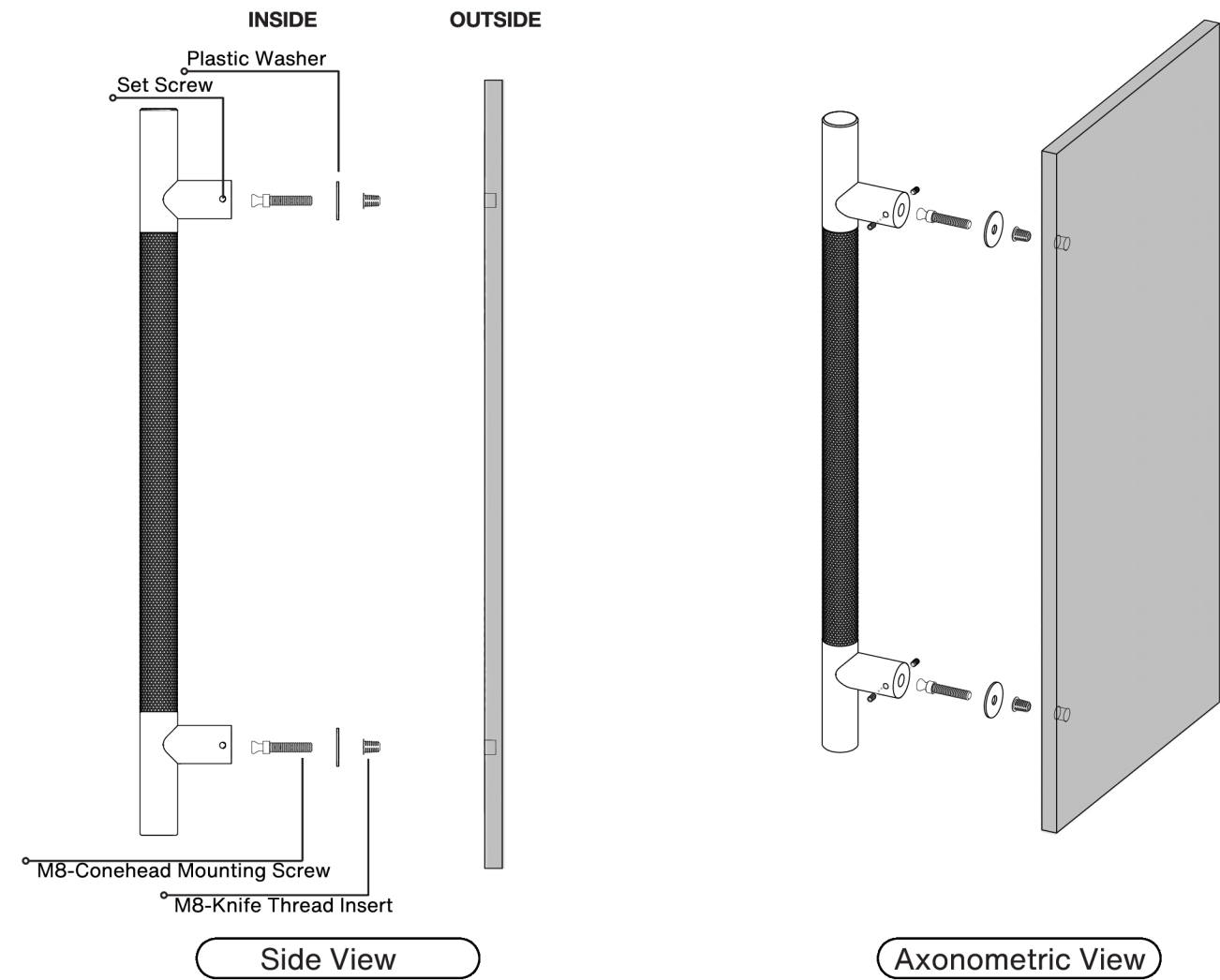


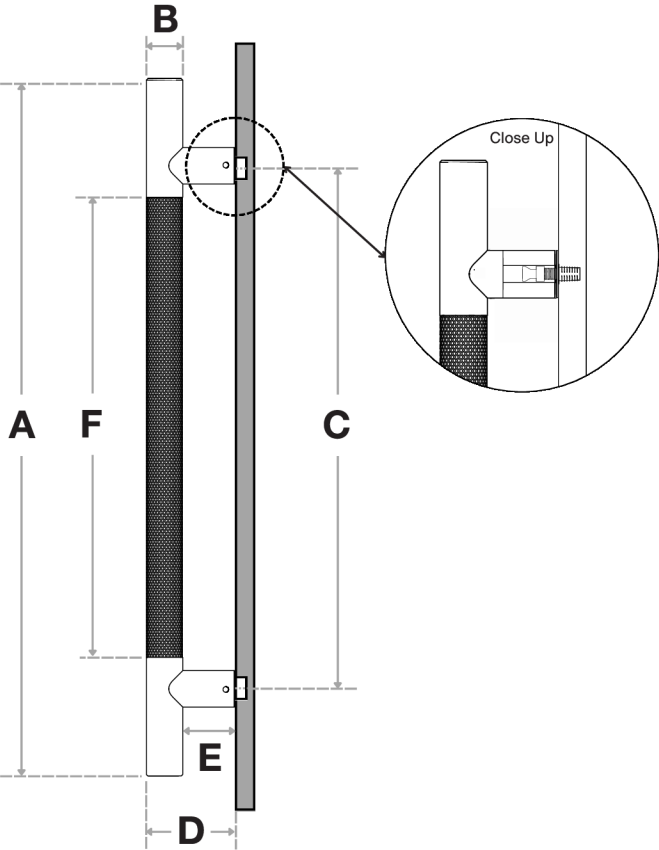
Pro-Line Knurled Series™

One-Sided Ladder Pull Handle
Concealed Surface Mounts
Suitable for Wood and Metal Doors



Pro-Line Knurled Series™

One-Sided Ladder Pull Handle
Concealed Surface Mounts
Suitable for Wood and Metal Doors



Handle Length (A)	Diameter (B)	Center-to-Center (C)	Projection (D)	Clearance (E)	Knurled (F)
12"	1-1/4"	6"	3"	1-3/4"	4-3/4"
18"	1-1/4"	12"	3"	1-3/4"	10-3/4"
24"	1-1/4"	18"	3"	1-3/4"	16-3/4"
36"	1-1/4"	30"	3"	1-3/4"	28-3/4"
48"	1-1/4"	42"	3"	1-3/4"	40-3/4"
60"	1-1/4"	54"	3"	1-3/4"	52-3/4"

Side View

FINISHES (1)

- Brushed Satin = S
- Matte Black Powder Coated = B
- Satin Brass = SB

OVERALL LENGTHS (2)

12" = 12
18" = 18
24" = 24
36" = 36
48" = 48
60" = 60

DIAMETERS (3)

1-1/4" = 1250

For a complete **SKU#** add Finish **(1)**, Overall length **(2)** and Diameter **(3)**

SH-PRO-316-LPH-CO-KNU- **FINISH** - **OVERALL LENGTH** - **DIAMETER**

Material: 316 grade stainless steel alloy.

DOOR TYPE

WOOD & METAL DOORS.
UP TO 4-3/4"

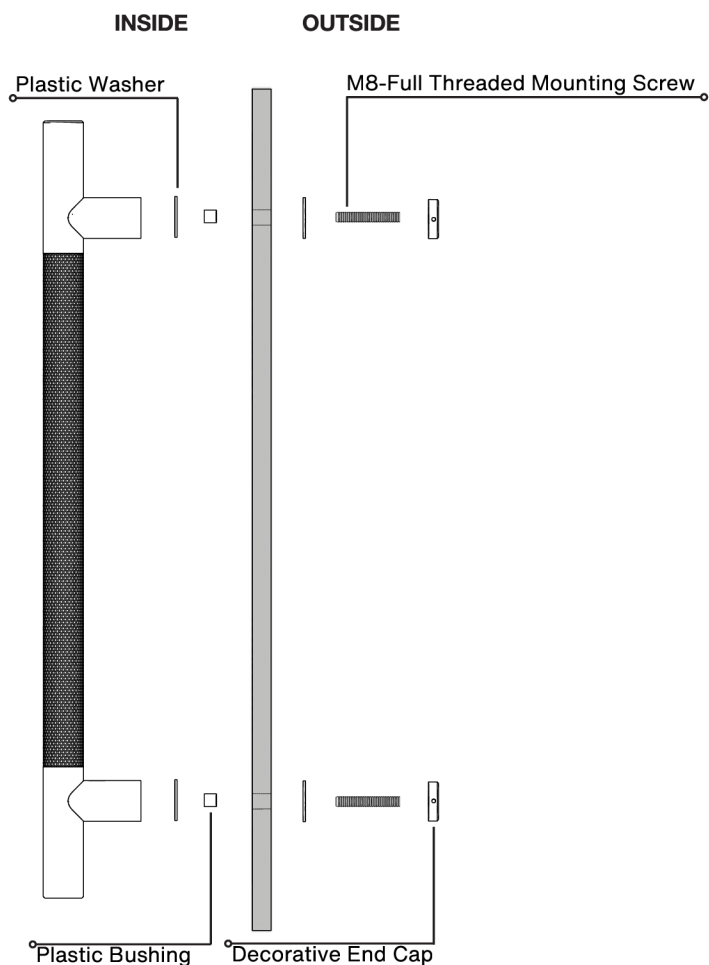
HOLE SIZE
DIAMETER

7/16"

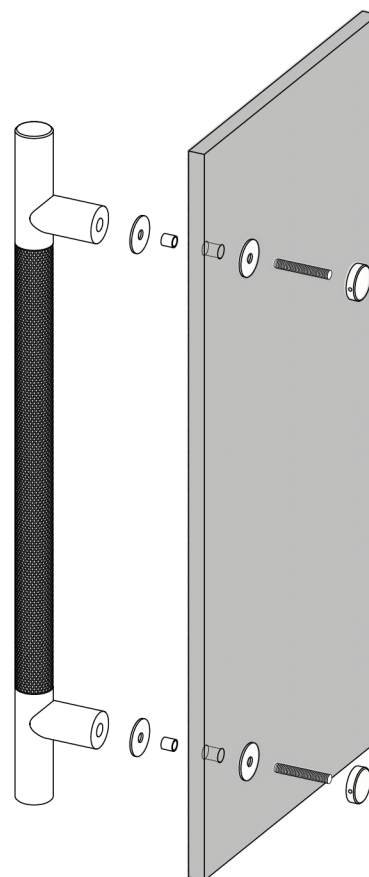
Not all Finishes, Lengths and Diameters are available in this style.
For customization requests, please contact us at info@strongarhardware.com

Pro-Line Knurled Series™

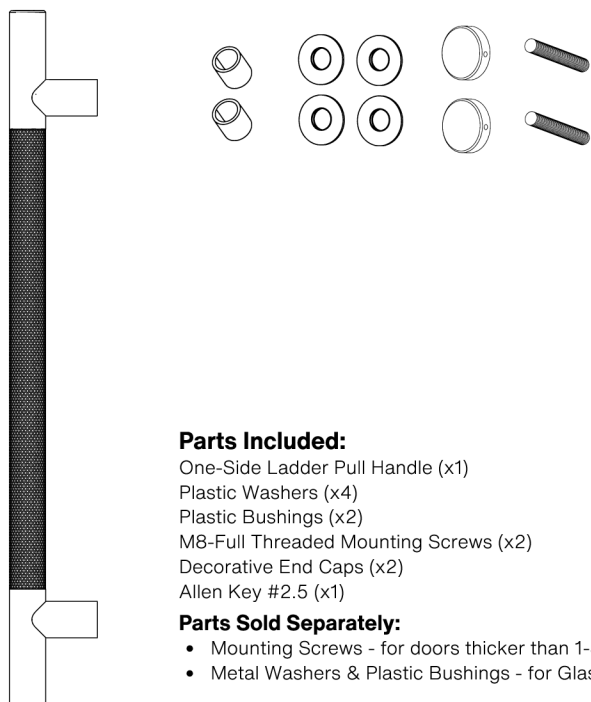
One-Sided Ladder Pull Handle
Decorative Thru-Bolt End Caps
Suitable for Glass, Wood, and Metal Doors



Side View



Axonometric View



Parts Included:

- One-Side Ladder Pull Handle (x1)
- Plastic Washers (x4)
- Plastic Bushings (x2)
- M8-Full Threaded Mounting Screws (x2)
- Decorative End Caps (x2)
- Allen Key #2.5 (x1)

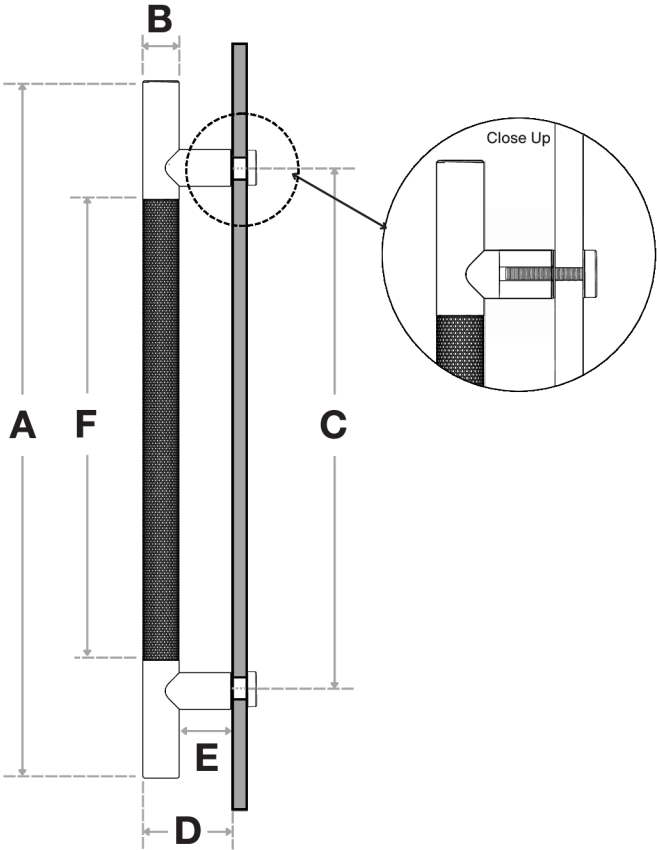
Parts Sold Separately:

- Mounting Screws - for doors thicker than 1-3/4".
- Metal Washers & Plastic Bushings - for Glass Doors.



Pro-Line Knurled Series™

One-Sided Ladder Pull Handle
Decorative Thru-Bolt End Caps
Suitable for Glass, Wood, and Metal Doors



Handle Length (A)	Diameter (B)	Center-to-Center (C)	Projection (D)	Clearance (E)	Knurled (F)
12"	1-1/4"	6"	3"	1-3/4"	4-3/4"
18"	1-1/4"	12"	3"	1-3/4"	10-3/4"
24"	1-1/4"	18"	3"	1-3/4"	16-3/4"
36"	1-1/4"	30"	3"	1-3/4"	28-3/4"
48"	1-1/4"	42"	3"	1-3/4"	40-3/4"
60"	1-1/4"	54"	3"	1-3/4"	52-3/4"

Side View

FINISHES (1)

- Brushed Satin = **S**
- Matte Black Powder Coated = **B**
- Satin Brass = **SB**

OVERALL LENGTHS (2)

12" = **12**
18" = **18**
24" = **24**
36" = **36**
48" = **48**
60" = **60**

DIAMETERS (3)

1-1/4" = **1250**

For a complete **SKU#** add Finish **(1)**, Overall length **(2)** and Diameter **(3)**

SH-PRO-316-LPH-DE-KNU- **FINISH** - **OVERALL LENGTH** - **DIAMETER**

Material: 316 grade stainless steel alloy.

DOOR TYPE

GLASS DOORS
UP TO 3/4"

WOOD & METAL DOORS.
UP TO 4-3/4"

HOLE SIZE
DIAMETER

5/8"

5/16"

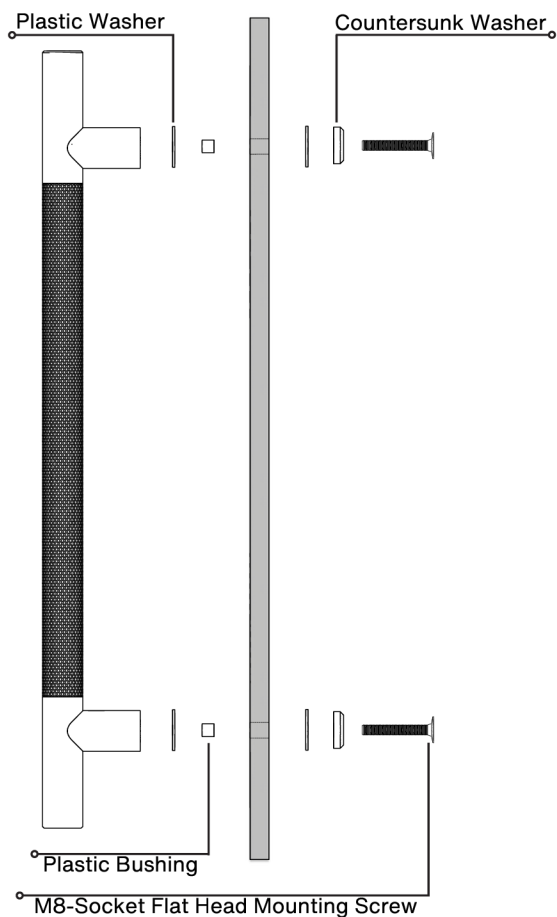
Not all Finishes, Lengths and Diameters are available in this style.
For customization requests, please contact us at info@strongarhardware.com

Pro-Line Knurled Series™

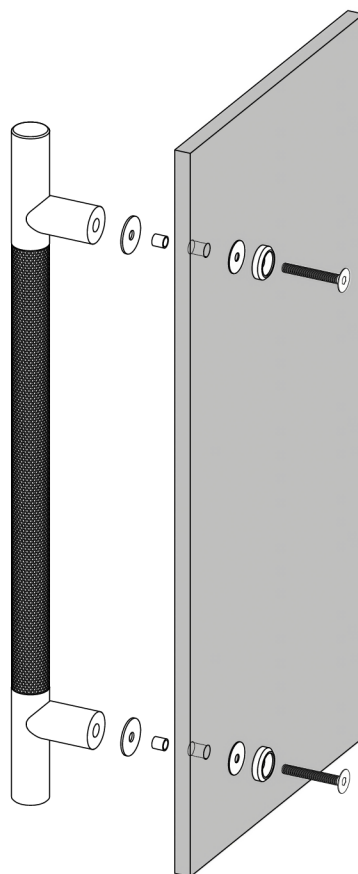
One-Sided Ladder Pull Handle
Countersunk Thru-Bolt Washers
Suitable for Glass, Wood and Metal Doors

INSIDE

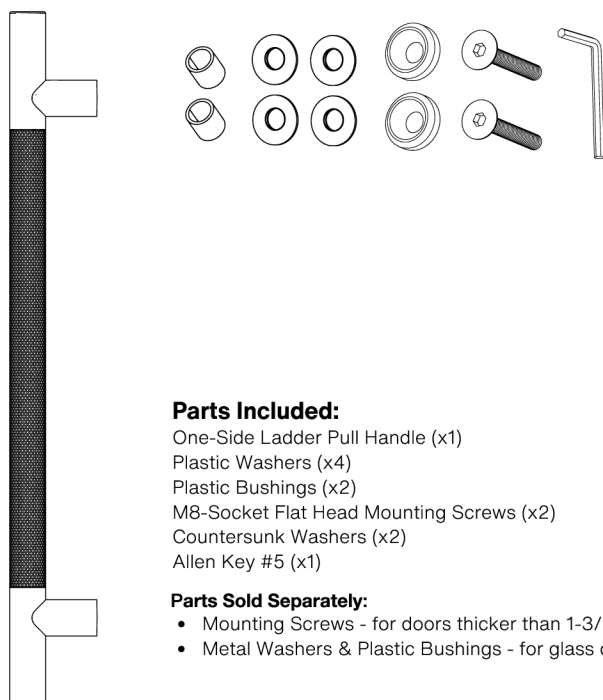
OUTSIDE



Side View



Axonometric View



Parts Included:

- One-Side Ladder Pull Handle (x1)
- Plastic Washers (x4)
- Plastic Bushings (x2)
- M8-Socket Flat Head Mounting Screws (x2)
- Countersunk Washers (x2)
- Allen Key #5 (x1)

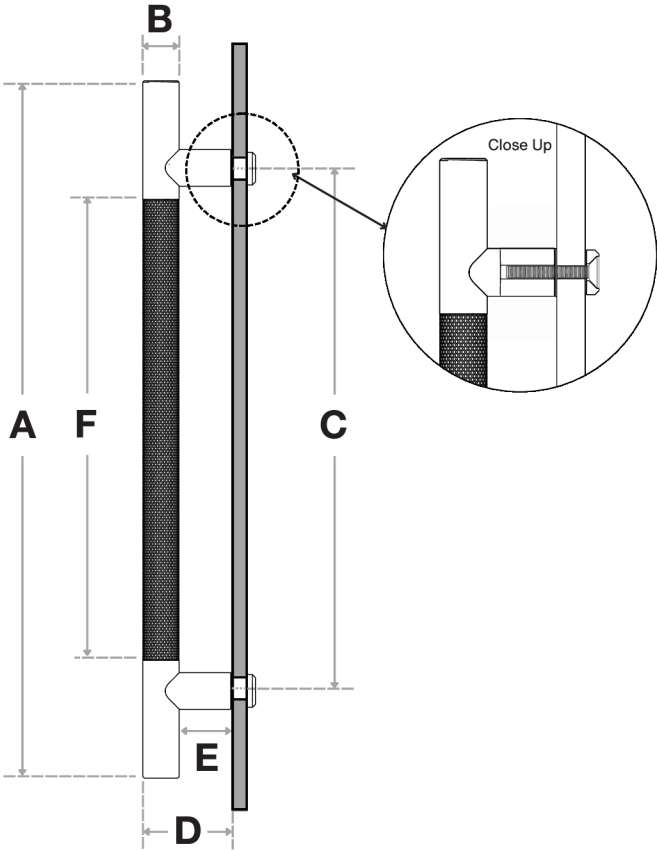
Parts Sold Separately:

- Mounting Screws - for doors thicker than 1-3/4".
- Metal Washers & Plastic Bushings - for glass doors.



Pro-Line Knurled Series™

One-Sided Ladder Pull Handle
Countersunk Thru-Bolt Washers
Suitable for Glass, Wood and Metal Doors



Handle Length (A)	Diameter (B)	Center-to-Center (C)	Projection (D)	Clearance (E)	Knurled (F)
12"	1-1/4"	6"	3"	1-3/4"	4-3/4"
18"	1-1/4"	12"	3"	1-3/4"	10-3/4"
24"	1-1/4"	18"	3"	1-3/4"	16-3/4"
36"	1-1/4"	30"	3"	1-3/4"	28-3/4"
48"	1-1/4"	42"	3"	1-3/4"	40-3/4"
60"	1-1/4"	54"	3"	1-3/4"	52-3/4"

Side View

FINISHES (1)

- Brushed Satin = **S**
- Matte Black Powder Coated = **B**
- Satin Brass = **SB**

OVERALL LENGTHS (2)

12" = **12**
18" = **18**
24" = **24**
36" = **36**
48" = **48**
60" = **60**

DIAMETERS (3)

1-1/4" = **1250**

For a complete **SKU#** add Finish **(1)**, Overall length **(2)** and Diameter **(3)**

SH-PRO-316-LPH-CW-KNU- **FINISH** - **OVERALL LENGTH** - **DIAMETER**

Material: 316 grade stainless steel alloy.

DOOR TYPE

GLASS DOORS
UP TO 3/4"

WOOD & METAL DOORS.
UP TO 4-3/4"

HOLE SIZE
DIAMETER

5/8"

5/16"

Not all Finishes, Lengths and Diameters are available in this style.
For customization requests, please contact us at info@strongarhardware.com