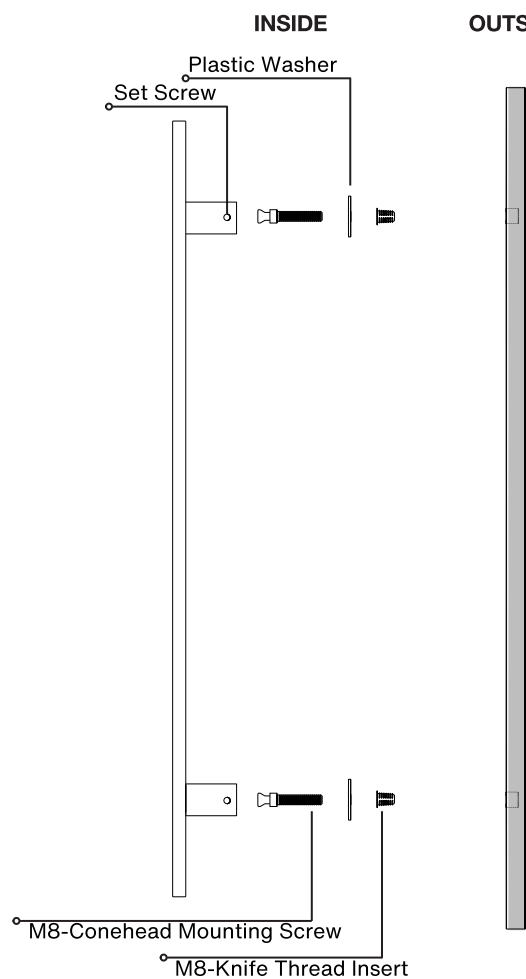


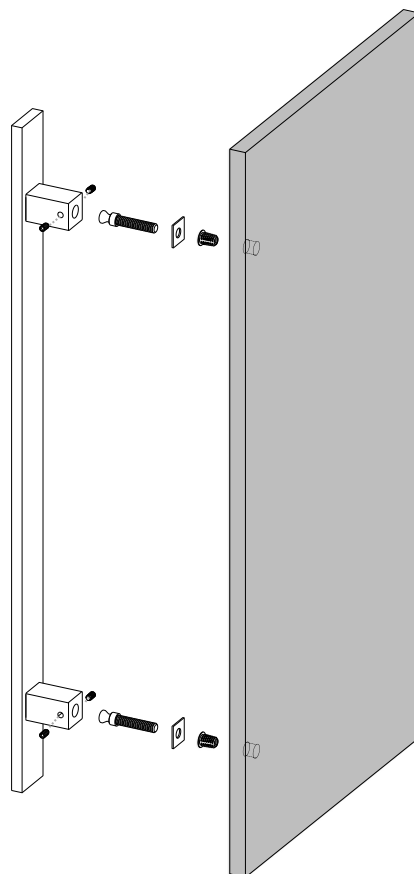
Pro-Line Flat Bar Series™

One-Sided Ladder Pull Handle

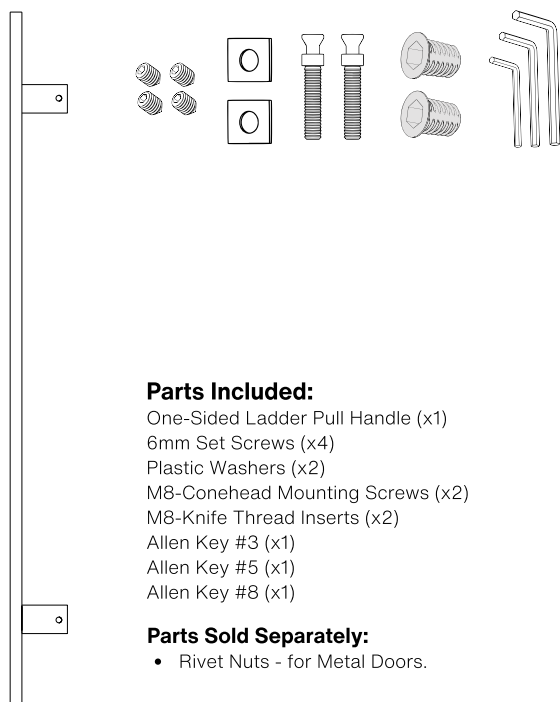
Concealed Surface Mounts
Suitable for Wood and Metal Doors



Side View



Axonometric View



Parts Included:

- One-Sided Ladder Pull Handle (x1)
- 6mm Set Screws (x4)
- Plastic Washers (x2)
- M8-Conehead Mounting Screws (x2)
- M8-Knife Thread Inserts (x2)
- Allen Key #3 (x1)
- Allen Key #5 (x1)
- Allen Key #8 (x1)

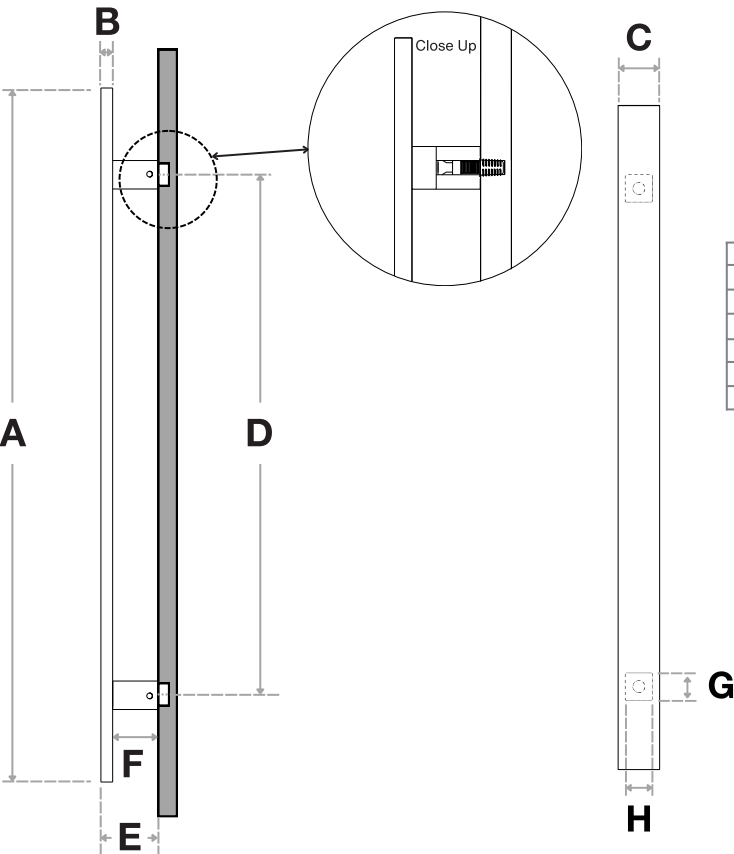
Parts Sold Separately:

- Rivet Nuts - for Metal Doors.



Pro-Line Flat Bar Series™

One-Sided Ladder Pull Handle
Concealed Surface Mounts
Suitable for Wood and Metal Doors



Handle Length (A)	Side (B)	Front (C)	Center-to-Center (D)	Projection (E)	Clearance (F)
12"	25/64"	1-9/16"	6"	2"	1-5/8"
18"	25/64"	1-9/16"	12"	2"	1-5/8"
24"	25/64"	1-9/16"	18"	2"	1-5/8"
36"	25/64"	1-9/16"	30"	2"	1-5/8"
48"	25/64"	1-9/16"	42"	2"	1-5/8"
60"	25/64"	1-9/16"	54"	2"	1-5/8"

Posts Cross -Section	
Post Side (G)	Post Front (G)
1"	1"
1"	1"
1"	1"
1"	1"
1"	1"
1"	1"

Side View

Front View

FINISHES (1)

- Brushed Satin = S
- Matte Black Powder Coated = B
- Satin Brass = SB

OVERALL LENGTHS (2)

- 12" = 12
- 18" = 18
- 24" = 24
- 36" = 36
- 48" = 48
- 60" = 60

CROSS-SECTION (3)

1.57" x 0.39" = 4010

For a complete **SKU#** add Finish (1), Overall length (2) and Cross-Section (3)

SH-PRO-304-FLB-CO- FINISH - OVERALL LENGTH - CROSS SECTION

Material: 304 grade stainless steel alloy.

DOOR TYPE

WOOD & METAL DOORS.
UP TO 4-3/4"

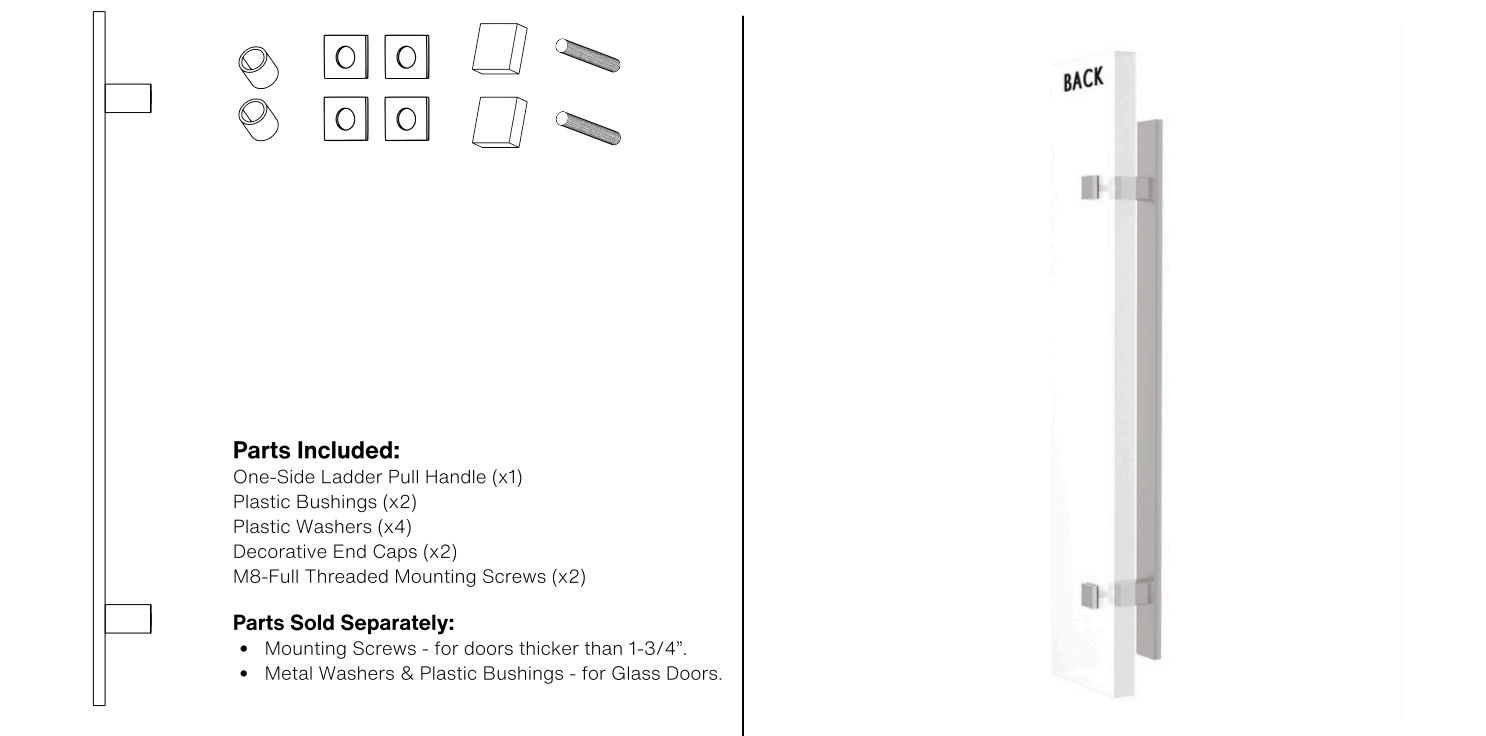
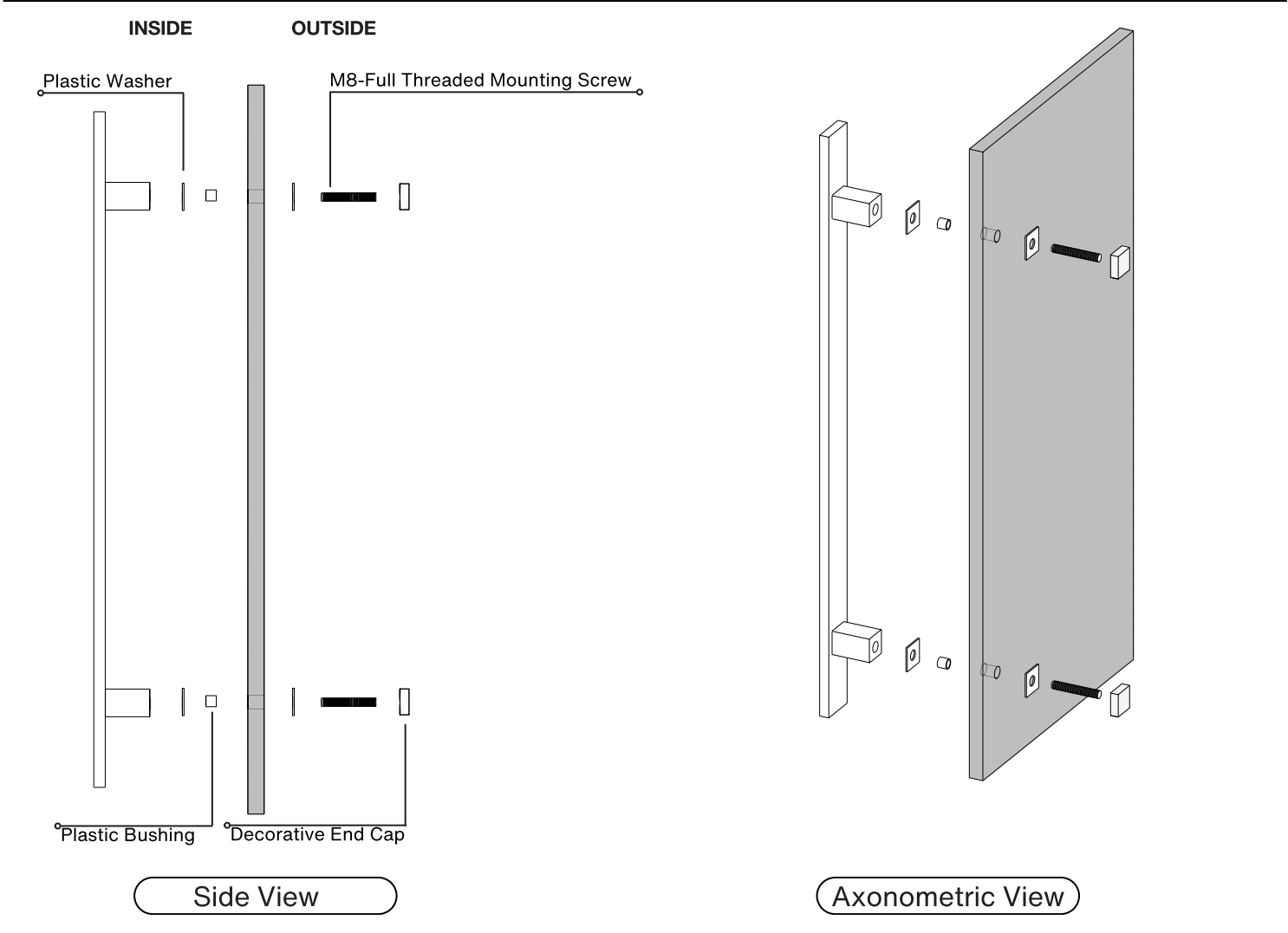
HOLE SIZE
DIAMETER

7/16"

Not all Finishes, Lengths and Diameters are available in this style.
For customization requests, please contact us at info@strongarhardware.com

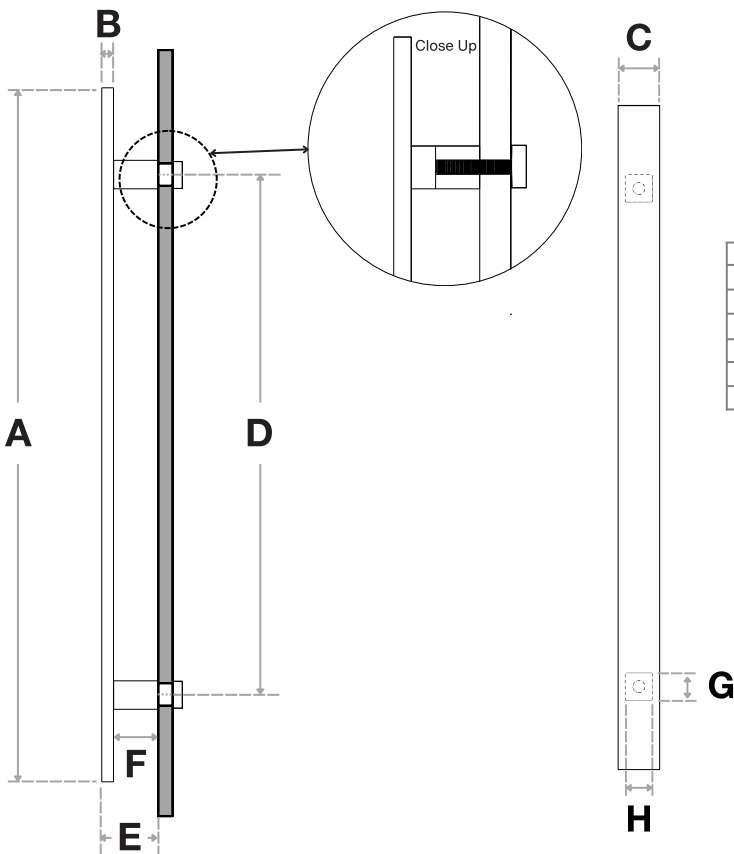
Pro-Line Flat Bar Series™

One-Sided Ladder Pull Handle
Decorative Thru-Bolt End Caps
Suitable for Glass, Wood, and Metal Doors



Pro-Line Flat Bar Series™

One-Sided Ladder Pull Handle
Decorative Thru-Bolt End Caps
Suitable for Glass, Wood, and Metal Doors



Handle Length (A)	Side (B)	Front (C)	Center-to-Center (D)	Projection (E)	Clearance (F)
12"	25/64"	1-9/16"	6"	2"	1-5/8"
18"	25/64"	1-9/16"	12"	2"	1-5/8"
24"	25/64"	1-9/16"	18"	2"	1-5/8"
36"	25/64"	1-9/16"	30"	2"	1-5/8"
48"	25/64"	1-9/16"	42"	2"	1-5/8"
60"	25/64"	1-9/16"	54"	2"	1-5/8"

Posts Cross -Section	
Post Side (G)	Post Front (G)
1"	1"
1"	1"
1"	1"
1"	1"
1"	1"
1"	1"

Side View

Front View

FINISHES (1)

- Brushed Satin = S
- Matte Black Powder Coated = B
- Satin Brass = SB

OVERALL LENGTHS (2)

12" = 12
18" = 18
24" = 24
36" = 36
48" = 48
60" = 60

CROSS-SECTION (3)

1.57" x 0.39" = 4010

For a complete **SKU#** add Finish (1), Overall length (2) and Cross-Section (3)

SH-PRO-304-FLB-DE- FINISH - OVERALL LENGTH - CROSS SECTION

Material: 304 grade stainless steel alloy.

DOOR TYPE

GLASS DOORS
UP TO 3/4"

WOOD & METAL DOORS.
UP TO 4-3/4"

HOLE SIZE
DIAMETER

5/8"

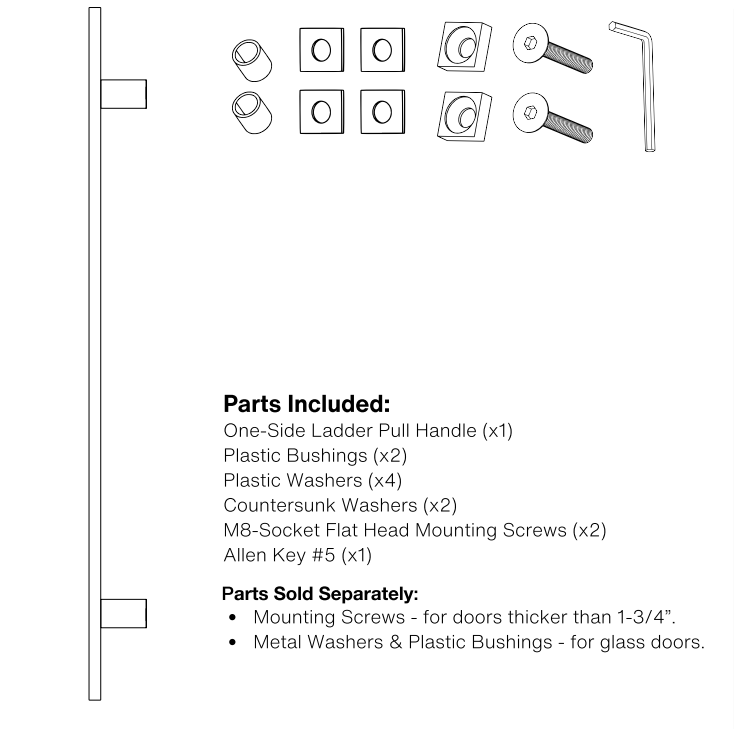
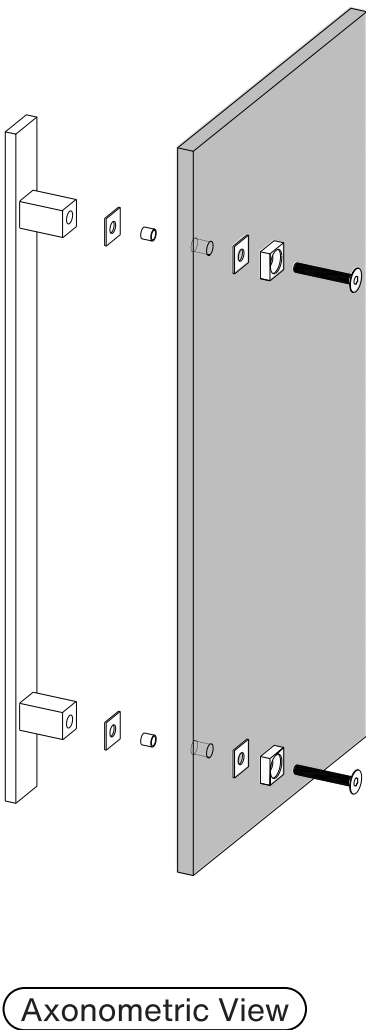
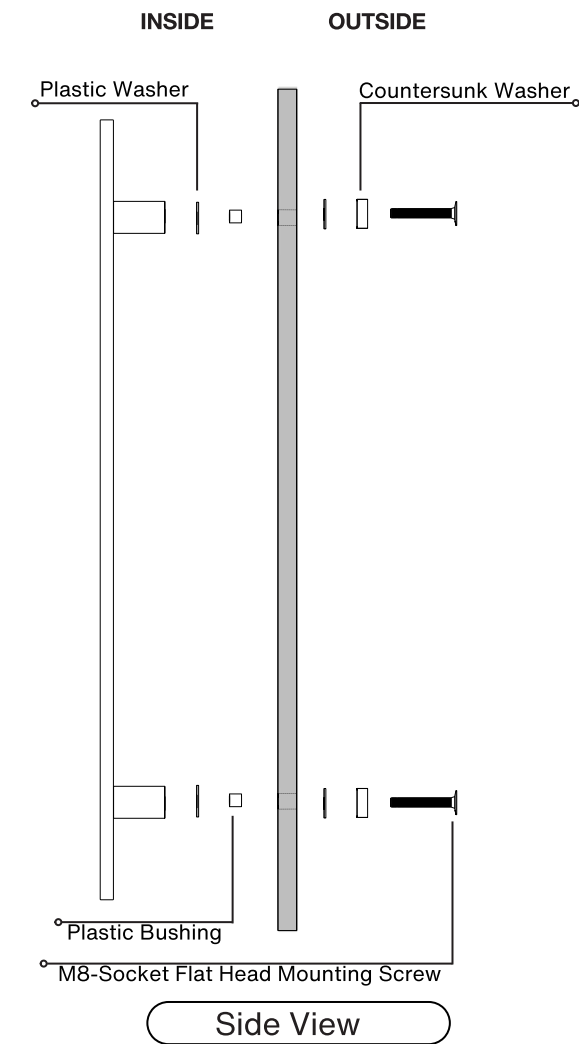
5/16"

Not all Finishes, Lengths and Diameters are available in this style.

For customization requests, please contact us at info@strongarhardware.com

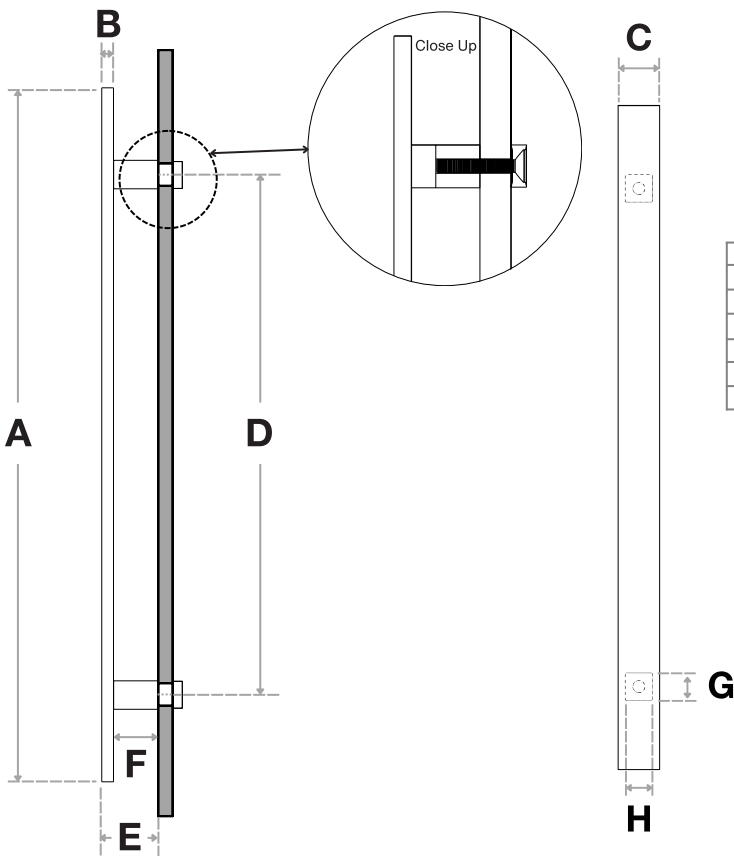
Pro-Line Flat Bar Series™

One-Sided Ladder Pull Handle
Countersunk Thru-Bolt Washers
Suitable for Glass, Wood and Metal Doors



Pro-Line Flat Bar Series™

One-Sided Ladder Pull Handle
Countersunk Thru-Bolt Washers
Suitable for Glass, Wood and Metal Doors



Handle Length (A)	Side (B)	Front (C)	Center-to-Center (D)	Projection (E)	Clearance (F)
12"	25/64"	1-9/16"	6"	2"	1-5/8"
18"	25/64"	1-9/16"	12"	2"	1-5/8"
24"	25/64"	1-9/16"	18"	2"	1-5/8"
36"	25/64"	1-9/16"	30"	2"	1-5/8"
48"	25/64"	1-9/16"	42"	2"	1-5/8"
60"	25/64"	1-9/16"	54"	2"	1-5/8"

Posts Cross -Section	
Post Side (G)	Post Front (G)
1"	1"
1"	1"
1"	1"
1"	1"
1"	1"
1"	1"

Side View

Front View

FINISHES (1)

- Brushed Satin = S
- Matte Black Powder Coated = B
- Satin Brass = SB

OVERALL LENGTHS (2)

12" = 12
18" = 18
24" = 24
36" = 36
48" = 48
60" = 60

CROSS-SECTION (3)

1.57" x 0.39" = 4010

For a complete **SKU#** add Finish (1), Overall length (2) and Cross-Section (3)

SH-PRO-304-FLB-CW- **FINISH** - **OVERALL LENGTH** - **CROSS SECTION**

Material: 304 grade stainless steel alloy.

DOOR TYPE

GLASS DOORS
UP TO 3/4"

WOOD & METAL DOORS.
UP TO 4-3/4"

HOLE SIZE
DIAMETER

5/8"

5/16"

Not all Finishes, Lengths and Diameters are available in this style.
For customization requests, please contact us at info@strongarhardware.com