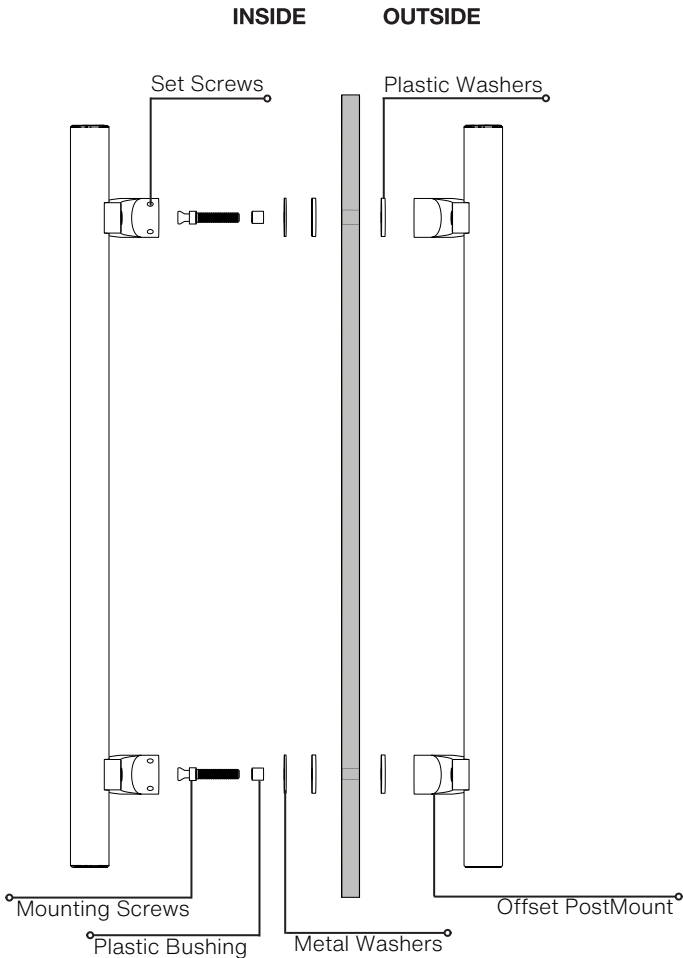
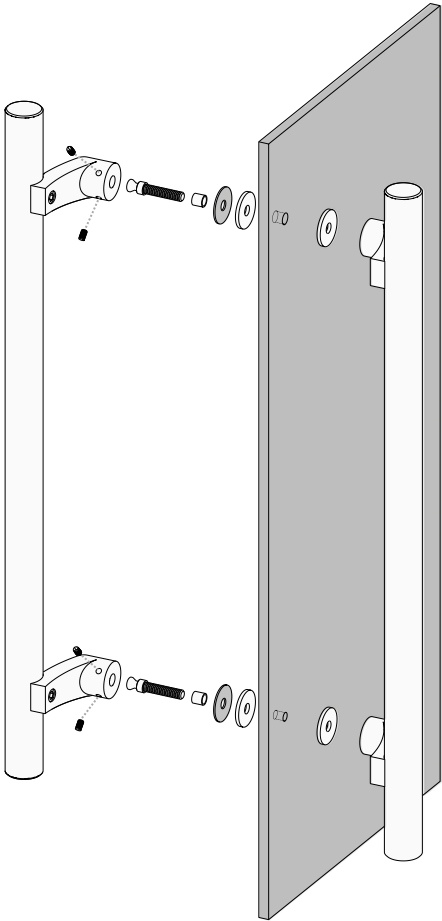


Pro-Line Series™

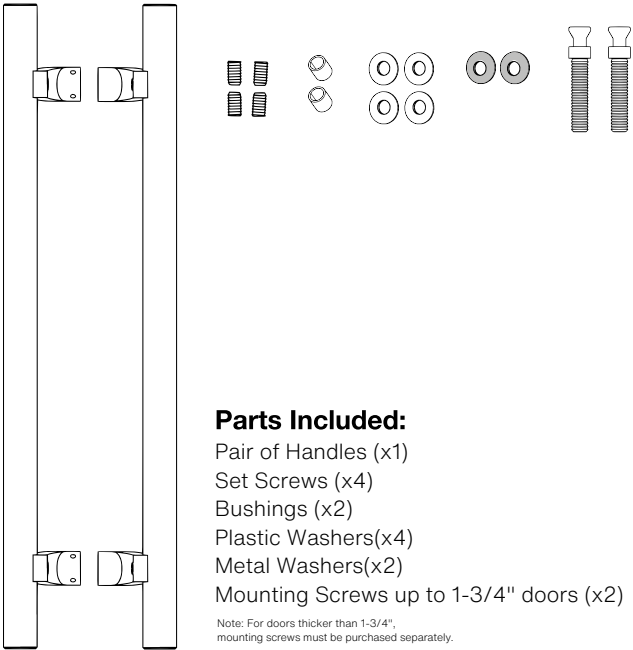
PostMount Offset Walnut Pull Handle
Solid Beech Wood Grip in a Walnut Finish
Stainless Steel Posts
Back to Back
Suitable for Glass, Wood and Metal Doors



Side View



Axonometric View



- Parts Included:**
- Pair of Handles (x1)
 - Set Screws (x4)
 - Bushings (x2)
 - Plastic Washers(x4)
 - Metal Washers(x2)
 - Mounting Screws up to 1-3/4" doors (x2)

Note: For doors thicker than 1-3/4", mounting screws must be purchased separately.



Pro-Line Series™

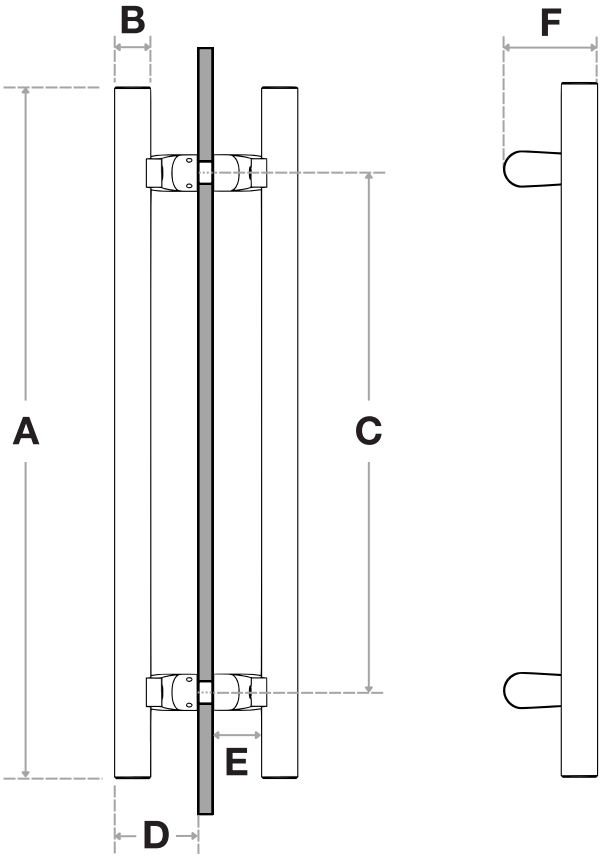
PostMount Offset Walnut Pull Handle

Solid Beech Wood Grip in a Walnut Finish

Stainless Steel Posts

Back to Back

Suitable for Glass, Wood and Metal Doors



Handle Length (A)	Diameter (B)	Center-to-Center (C)	Projection (D)	Clearance (E)	Width (F)
12"	1-1/4"	6"	2-7/8"	1-5/8"	3-1/4"
18"	1-1/4"	12"	2-7/8"	1-5/8"	3-1/4"
24"	1-1/4"	18"	2-7/8"	1-5/8"	3-1/4"
36"	1-1/4"	30"	2-7/8"	1-5/8"	3-1/4"
48"	1-1/4"	42"	2-7/8"	1-5/8"	3-1/4"

Side View

Front View

GRIP FINISHES (1):

Walnut = WS

POSTS FINISHES (2):

- Brushed Satin = S
- Polished = P
- Matte Black Powder Coated = B
- Bronze Powder Coated = BR
- Satin Brass = SB

OVERALL LENGTHS (3)

12" = 12
18" = 18
24" = 24
36" = 36
48" = 48

DIAMETER (4)

1-1/4" = 1250

For a complete **SKU#** add Grip Finish (1), Posts Finish (2), Overall length (3) and Diameter (4)

SH-PRO-316-OLPN-BEECH- **GRIP FINISH** - **ENDS FINISH** - **OVERALL LENGTH** - **DIAMETER**

DOOR TYPE

GLASS DOORS
UP TO 3/4"

WOOD & METAL DOORS
UP TO 4-3/4"

HOLE SIZE
DIAMETER

5/8"

5/16"

Not all Finishes, Lengths and Diameters are available in this style.
For customization requests, please contact us at info@strongarhardware.com