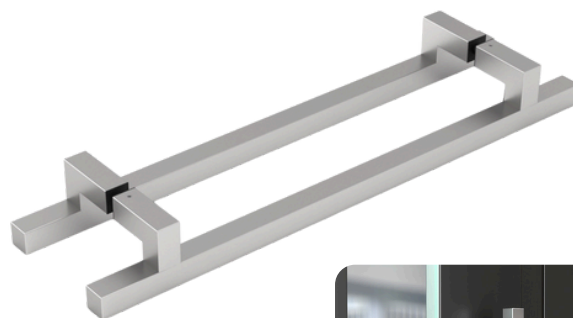
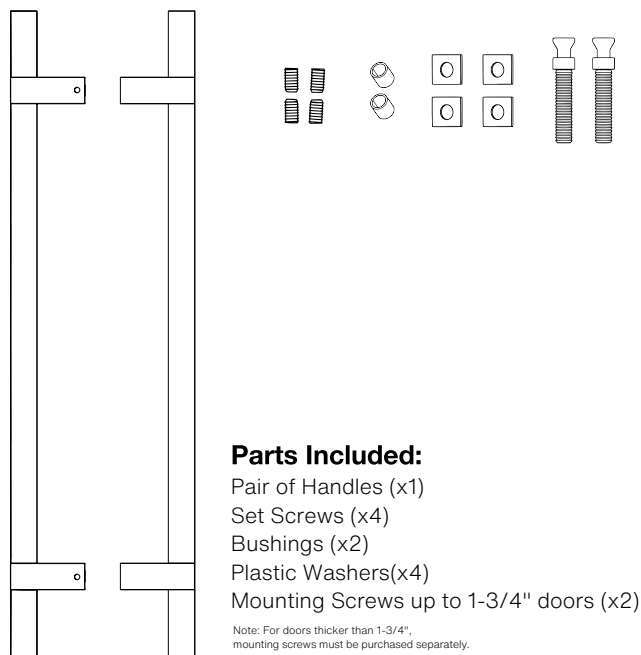
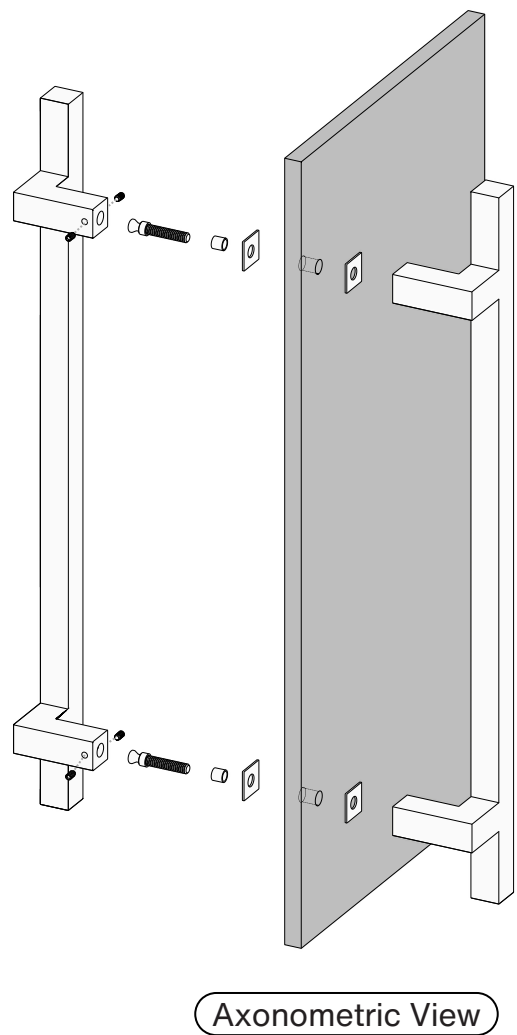
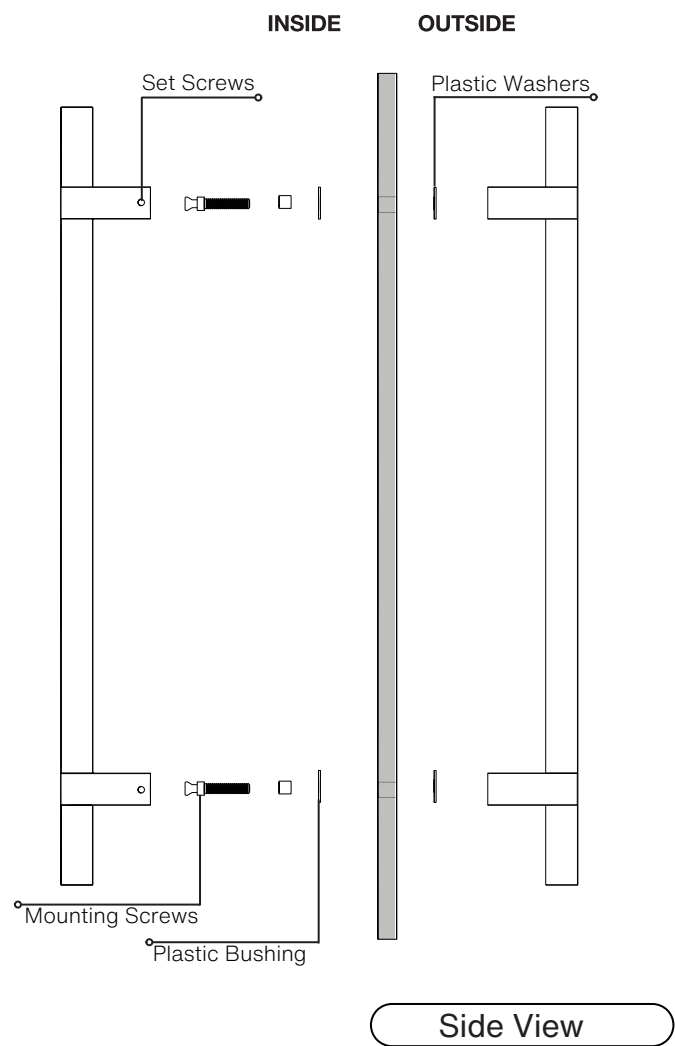
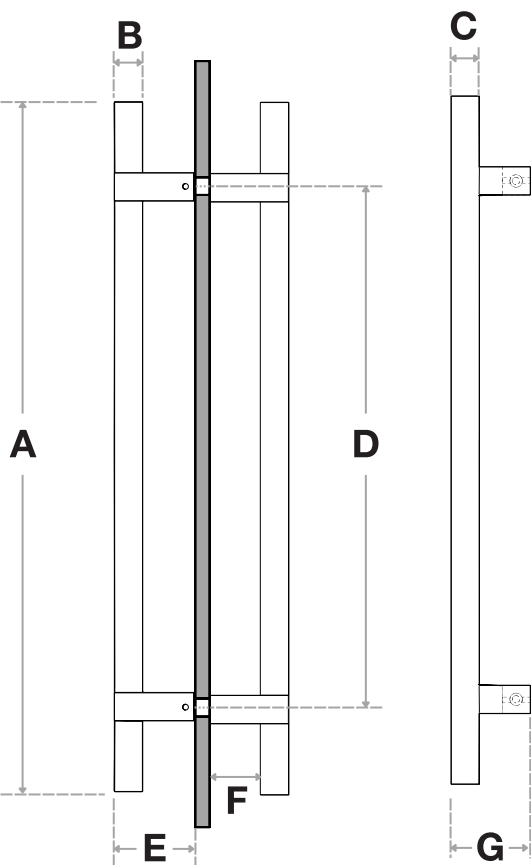


Pro-Line Square Series™

Offset 1" x 1" Ladder Pull Handle
Back to Back
Suitable for Glass, Wood and Metal Doors





Handle Length (A)	Side (B)	Front (C)	Center-to-Center (D)	Projection (E)	Clearance (F)	Wide (G)
12"	1"	1"	6"	3"	2"	3-1/8"
18"	1"	1"	12"	3"	2"	3-1/8"
24"	1"	1"	18"	3"	2"	3-1/8"
36"	1"	1"	30"	3"	2"	3-1/8"
48"	1"	1"	42"	3"	2"	3-1/8"

Side View

Front View

FINISHES (1):

- Brushed Satin = S
- Matte Black Powder Coated = B

OVERALL LENGTHS (2)

12" = 12
18" = 18
24" = 24
32" = 32
48" = 48

Cross-Section (3)

1" x 1" = 1010

For a complete **SKU#** add Finish (1), Overall length (2) and Cross-Section (3)

SH-PRO-316-OFSL-

-

-

FINISHOVERALL LENGTHCROSS SECTION

DOOR TYPE

GLASS DOORS
UP TO 3/4"

WOOD & METAL DOORS
UP TO 4-3/4"

HOLE SIZE
DIAMETER

5/8"

5/16"

Not all Finishes, Lengths and Diameters are available in this style.
For customization requests, please contact us at info@strongarhardware.com