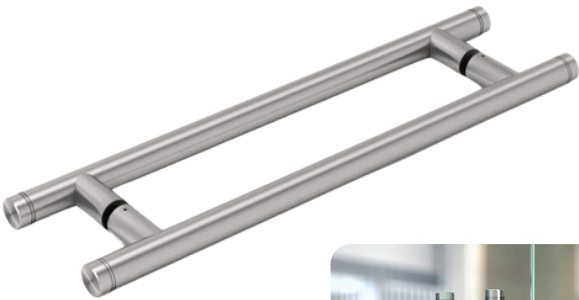
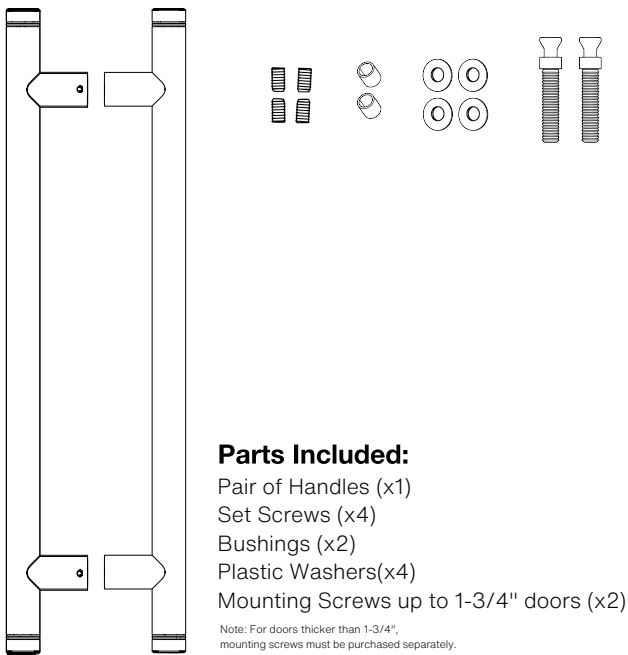
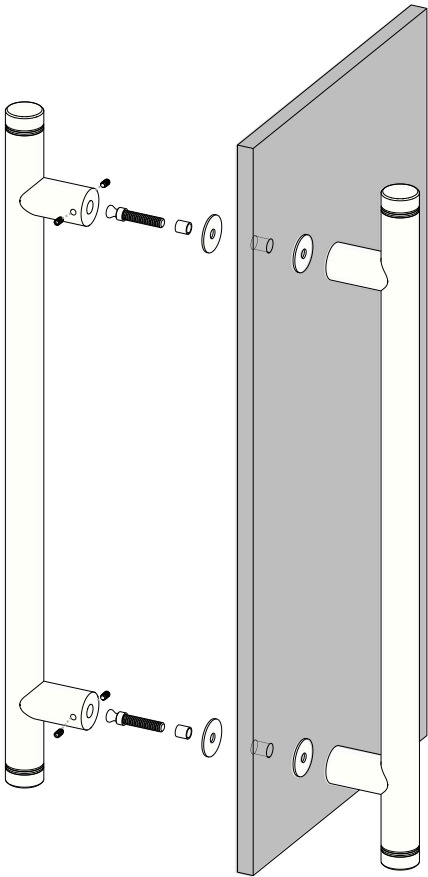
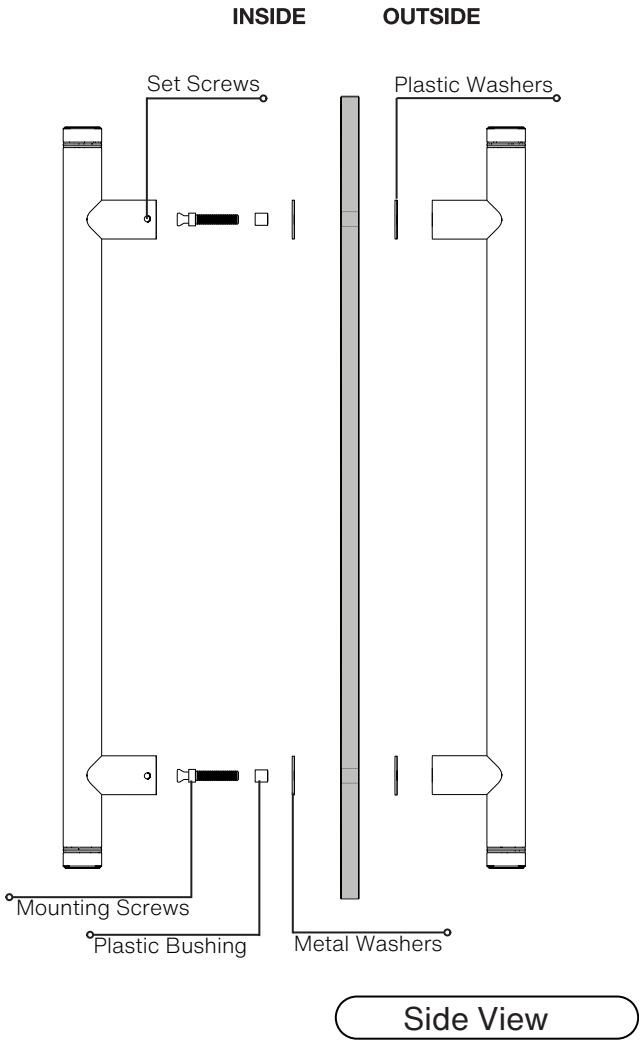
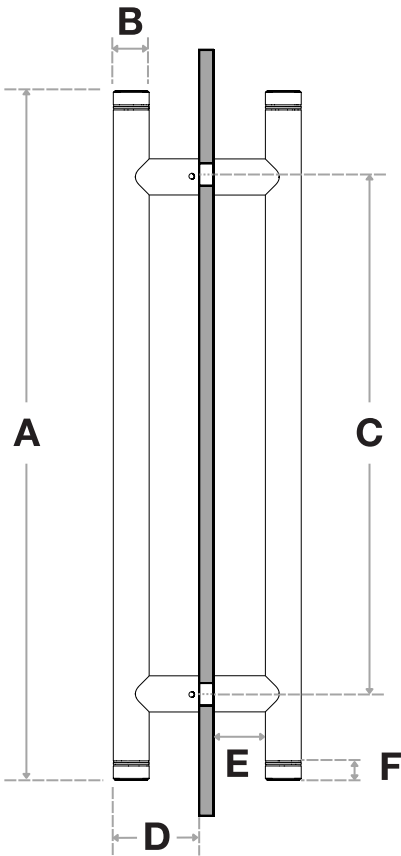


Pro-Line Grooved Series™

Ladder Pull Handle
Back to Back
Suitable for Glass, Wood and Metal Doors








Handle Length (A)	Diameter (B)	Center-to-Center (C)	Projection (D)	Clearance (E)	Grooved (F)
12"	1-1/4"	6"	3"	1-3/4"	11/16"
18"	1-1/4"	12"	3"	1-3/4"	11/16"
24"	1-1/4"	18"	3"	1-3/4"	11/16"
36"	1-1/4"	30"	3"	1-3/4"	11/16"
48"	1-1/4"	42"	3"	1-3/4"	11/16"
60"	1-1/4"	54"	3"	1-3/4"	11/16"

Side View

FINISHES (1):

-  Brushed Satin = S
-  Matte Black Powder Coated = B
-  Satin Brass = SB

OVERALL LENGTHS (2)

- 12" = 12
- 18" = 18
- 24" = 24
- 36" = 36
- 48" = 48
- 60" = 60

DIAMETER (3)

1-1/4" = 1250

For a complete **SKU#** add Finish **(1)**, Overall length **(2)** and Diameter **(3)**

SH-PRO-316-LPH-GRO-

-

-

FINISH

OVERALL LENGTH

DIAMETER

DOOR TYPE	GLASS DOORS UP TO 3/4"	WOOD & METAL DOORS UP TO 4-3/4"
HOLE SIZE DIAMETER	5/8"	5/16"

Not all Finishes, Lengths and Diameters are available in this style.
For customization requests, please contact us at info@strongarhardware.com